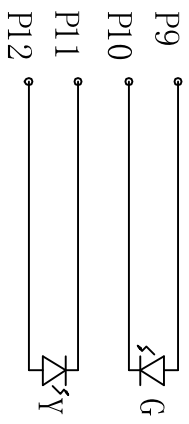
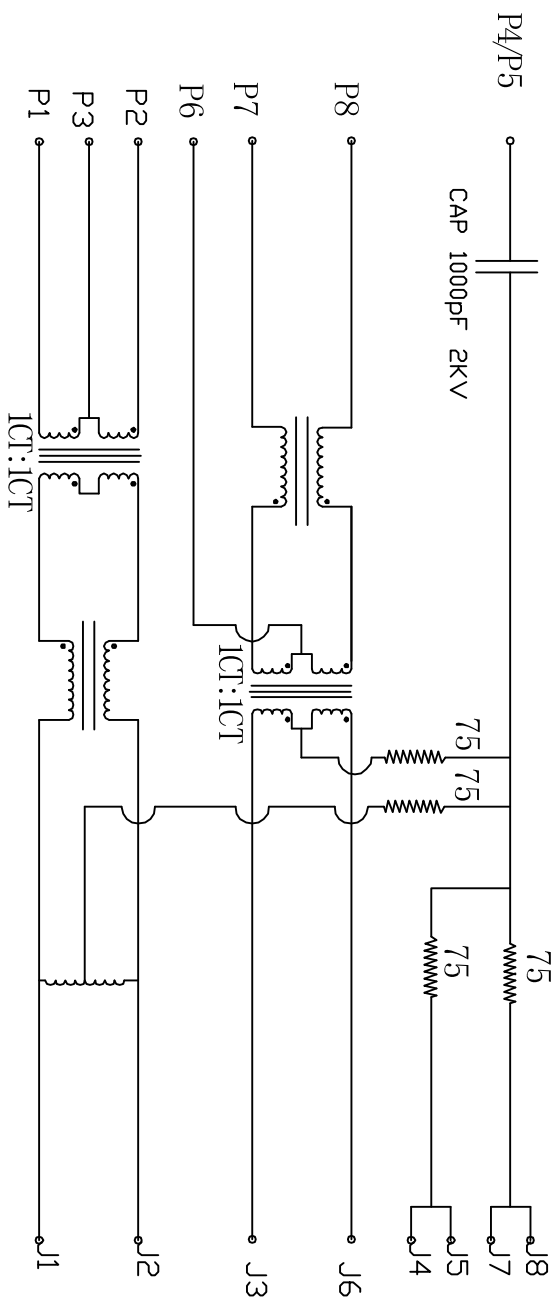


| Rev | AWO # | Description | Date | Appr |
|-----|-------|-----------------------------|------|------|
| | | SEE SHT 1 OF 2 FOR REVISION | | |

APPROVED: _____

DATE: _____ TITLE: _____



ELECTRICAL SPECIFICATIONS

- Turns Ratio: (P1 ~ P2) : (J1 ~ J2) 1:1 ±3%
(P7 ~ P8) : (J3 ~ J6) 1:1 ±3%
- Inductance: (P1 ~ P2) 350uH min. @ 0.1V, 100KHZ, 8mA DC Bias
(P7 ~ P8) 350uH min. @ 0.1V, 100KHZ, 8mA DC Bias
- Leakage Inductance: P1 ~ P2 (with J1 and J2 Short): 0.35uH Max. @ 1 MHz
P7 ~ P8 (with J3 and J6 Short): 0.35uH Max. @ 1 MHz
- Interwinding Capacitor: (P1 ~ P2) : (J1 ~ J2): 35pF max. @ 1MHz
(P7 ~ P8) : (J3 ~ J6): 35pF max @ 1mhz
- DC Resistance: (J1 ~ J2) : (J7 ~ J8): 1.2 Ohms Max.
- Return Loss: 1MHz to 30MHz: -18dB min / 30MHz to 80MHz: -12dB min
- Dielectric Withstanding: (P1~P2) : (J1~J2): (P7~P8) : (J3~J6) :1500V AC
- Insertion Loss: RS=RL=100OHM : 100KHZ TO 80MHZ : -1.2dB Min.
- Cross Talk: 1MHZ to 100MHZ: 35dB Typ.
- Common to Common mode Attenuation 30MHZ to 100MHZ: 30dB Typ.

UNLESS OTHERWISE SPECIFIED
ALL DIMENSIONS ARE INCHES [MM]
TOLERANCES: EXCEPT AS NOTED

| INCHES | HOLES |
|-------------|---------------|
| .X ± .10 | Ø.X ± .10 |
| .XX ± .020 | Ø.XXX ± .015 |
| .XXX ± .015 | Ø.XXXX ± .010 |

APPROVALS

| | | |
|----------|----|---------|
| DRAWN | DY | 8/27/09 |
| CHECKED | | |
| APPROVED | | |

ADAM TECH
909 Rahway Avenue, Union, NJ 07083
Phone: 908-687-5000 Fax: 908-687-5710

TITLE: MODULAR JACK GANGED, 1 PORT, 8P8C
W/ LED1 GREEN, LED2 YELLOW

| | | |
|------|-----------------------|--------------|
| SIZE | PART NO. | REV. |
| X | MTJ-88TX1-FSD-D1LH-M8 | A |
| REF: | S00003C | SCALE: NTS |
| | | SHEET 2 OF 2 |