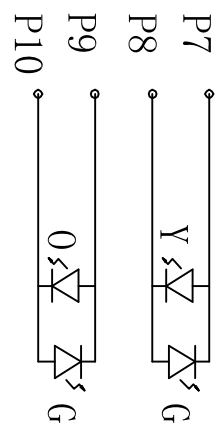
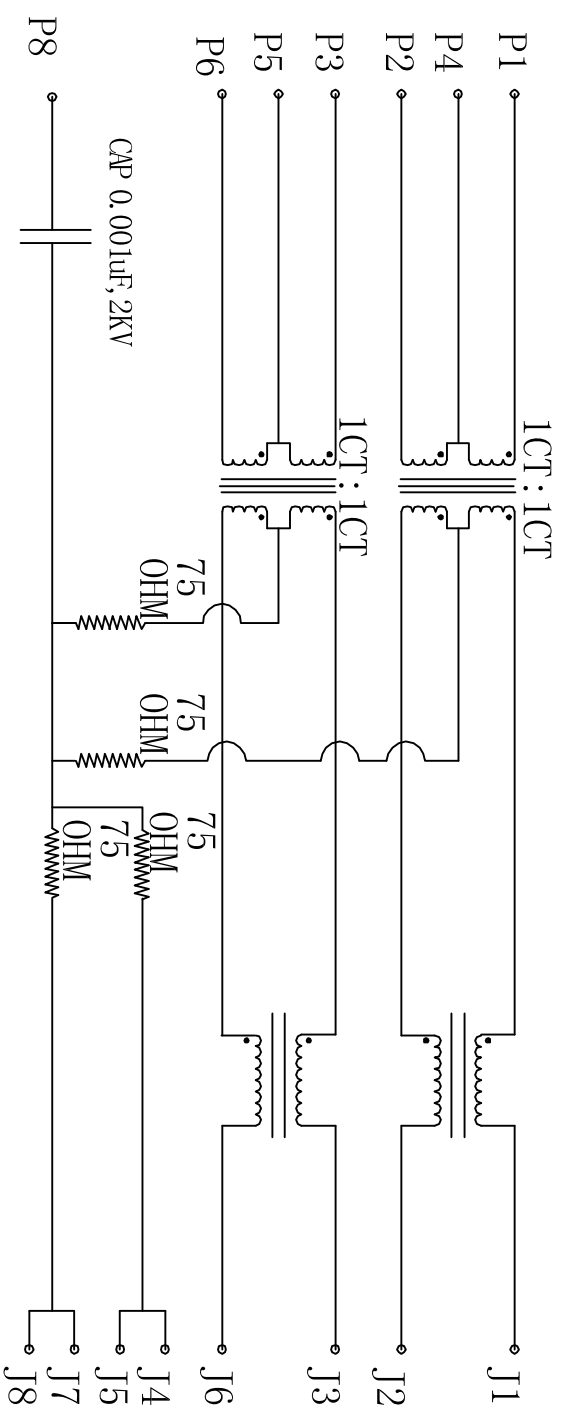


Rev	AWO #	Description	Date	Appr
		SEE SHT 1 OF 2 FOR REVISION		

APPROVED: \_\_\_\_\_

DATE: \_\_\_\_\_ TITLE: \_\_\_\_\_



**ELECTRICAL SPECIFICATIONS**

- Turns Ratio: (P1 ~ P2) : (J1 ~ J2) 1:1 ±3%
- Primary Inductance: 350uH min. @ 100KHZ, 0.1V 8mA DC Bias  
(P4 ~ P6) : (J3 ~ J6) 1:1 ±3%
- DC Resistance: (J1 ~ J2) : (J3 ~ J6): 1.2 Ohms Max.
- Insertion Loss: 1-100MHZ : -1.2dB MAX
- Return Loss: 1-30MHZ: -16dB TYP  
30-60MHZ: -12dB TYP  
60-80MHZ: -10dB TYP
- Cross Talk: 1-100MHZ: -30dB TYP
- Common to Common mode attenuation: 1-100MHz -30dB TYP
- Isolation: Line side to shield: 1500VAC or 2250VDC  
P1~P6 to J1~J8 1500VAC or 2250VDC
- DC current/voltage rating-pse pins: 350mA @57V(Continuous)

UNLESS OTHERWISE SPECIFIED  
ALL DIMENSIONS ARE INCHES [MM]  
TOLERANCES: EXCEPT AS NOTED

.X	± .10	Ø.X	± .10
.XX	± .020	Ø.XX	± .015
.XXX	± .015	Ø.XXX	± .010

INCHES HOLES

**ADAM TECH**  
909 Rahway Avenue, Union, NJ 07083  
Phone: 908-687-5000 Fax: 908-687-5710

TITLE: MODULAR JACK GANGED, 1 PORT, 8P8C  
W/ LED1 ORANGE/GREEN, LED2 YELLOW/GREEN

APPROVALS	DATE	SIZE	PART NO.	REV.
DRAWN	DY	11/15/10	MTJ-88SX1-FSP-LX-M4	-
CHECKED				
APPROVED				

REF: S000056 SCALE: NTS SHEET 2 OF 2