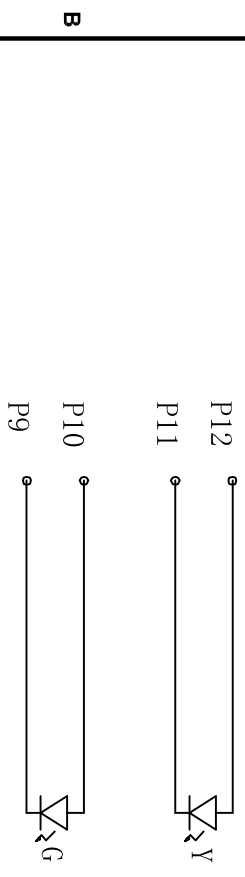
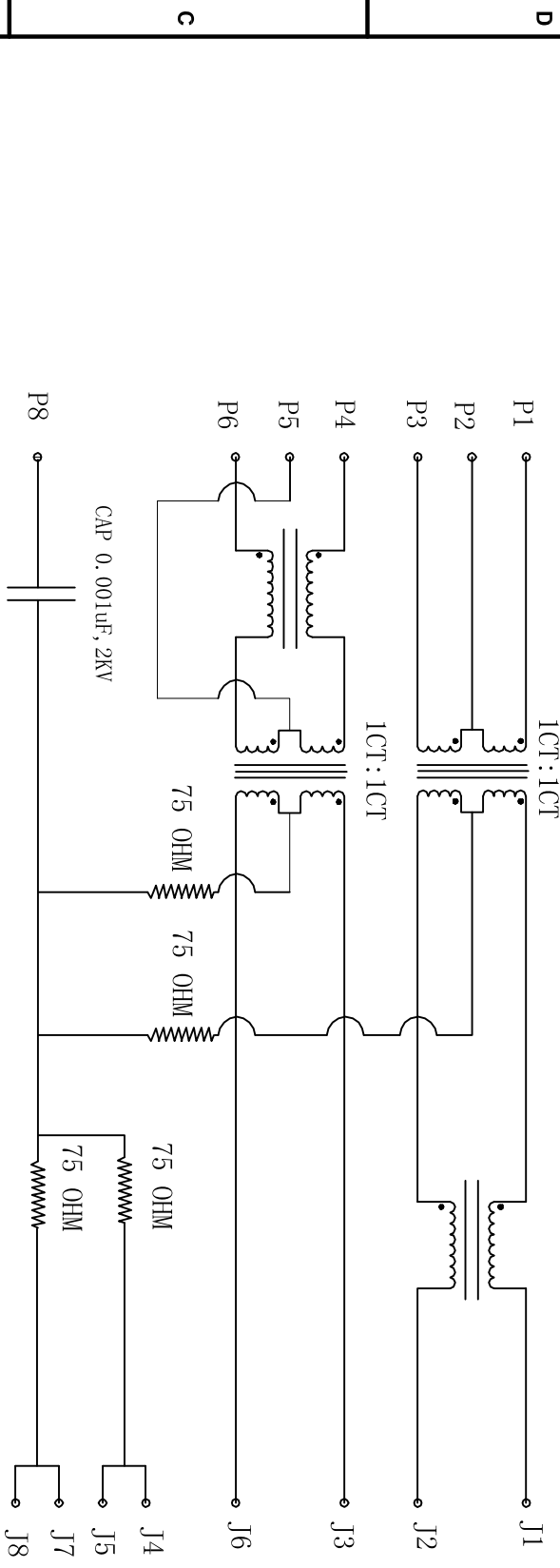


Rev	AWO #	Description	Date	Appr
		SEE SHT 1 OF 2 FOR REVISION		

APPROVED: _____

DATE: _____ TITLE: _____



ELECTRICAL SPECIFICATIONS

- Turns Ratio: (P1 ~ P3) : (J1 ~ J2) 1:1 ±3%
(P4 ~ P6) : (J3 ~ J6) 1:1 ±3%
- Inductance: (P1 ~ P3) AND (P4 ~ P6) 350uH min. @ 0.1V, 100KHZ, 8mA DC Bias @ 1 MHz
- Leakage Inductance: P1 ~ P3 (with J1 and J2 Short): 0.35uH Max. @ 1 MHz
P4 ~ P6 (with J3 and J6 Short): 0.35uH Max. @ 1 MHz
- Interwinding Capacitor: (P1 ~ P3) : (J1 ~ J2): 35pF max. @ 1MHz
(P4 ~ P6) : (J3 ~ J6): 35pF max @ 1mhz
- DC Resistance: (J1 ~ J2) : (J3 ~ J6): 1.2 Ohms Max.
- Return Loss: 1MHz to 30MHz: -18dB MIN
30MHz to 60MHz: -(18-20log(f/30))dB MIN (where f IS IN MHZ)
60MHz to 80MHz: -12dB MIN
- Dielectric Withstanding: (P1~P3) : (J1~J2): (P4~P6) : (J3~J6) :2250V AC
- Insertion Loss: 100KHZ TO 100MHZ : -1.2dB MIN
- Cross Talk: 1MHZ to 100MHZ: -35dB TYP
- Common to Common mode attenuation: 30MHZ TO 100MHZ: -30dB TYP

UNLESS OTHERWISE SPECIFIED
ALL DIMENSIONS ARE INCHES [MM]
TOLERANCES: EXCEPT AS NOTED
INCHES HOLES

.X	± .10	Ø.X	± .10
.XX	± .020	Ø.XXX	± .015
.XXX	± .015	Ø.XXX	± .010

APPROVALS

DRAWN	AY	DATE	10/1/10
CHECKED	AW	DATE	10/1/10
APPROVED		DATE	

ADAM TECH
909 Ratway Avenue, Union, NJ 07083
Phone: 908-687-5000 Fax: 908-687-5710

TITLE: MODULAR JACK GANGED, 1 PORT, 8P8C
W/ LED1 YELLOW, LED2 GREEN

SIZE	PART NO.	REV.
X	MTJ-88SX1-FSD-PG-LG-M122	-
REF:	S00005C	SHEET 2 OF 2