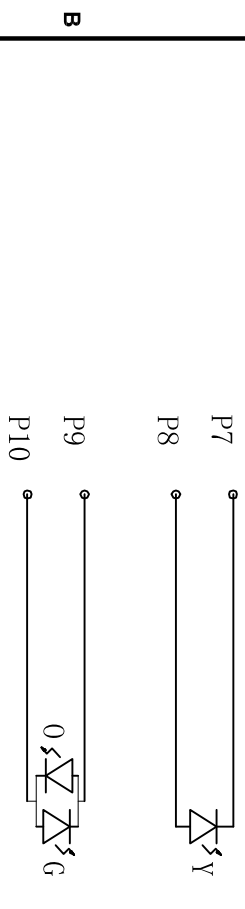
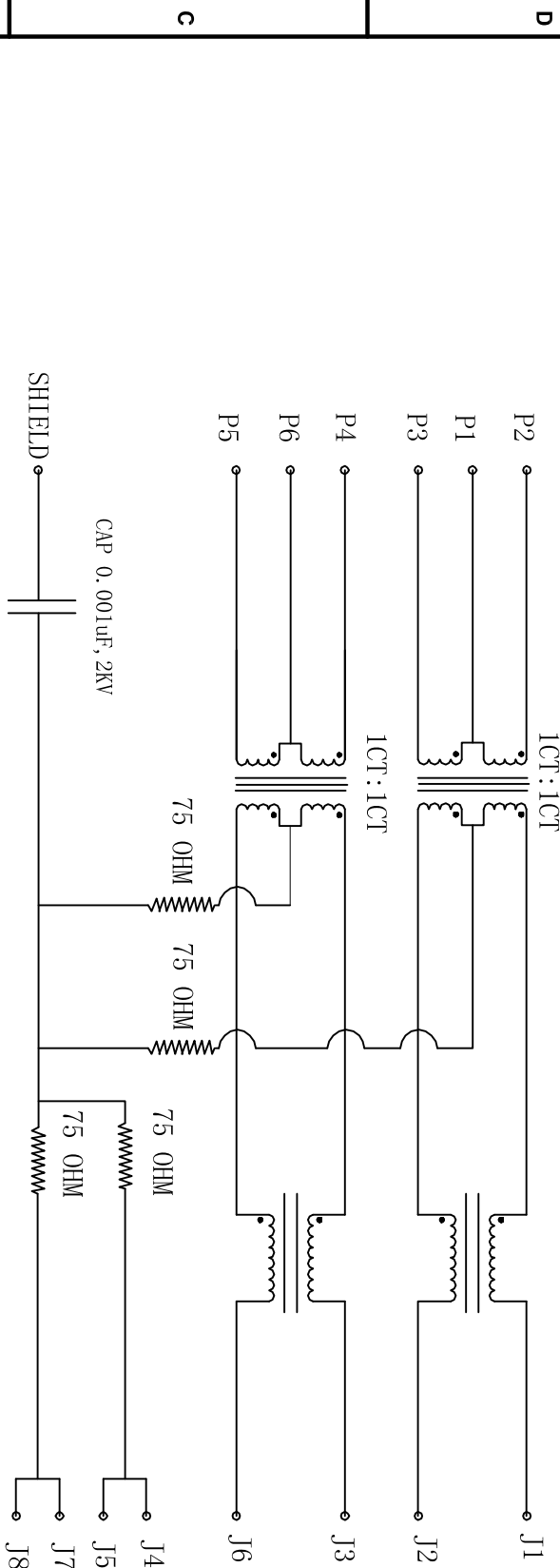


Rev	AWO #	Description	Date	Appr
		SEE SHT 1 OF 2 FOR REVISION		

APPROVED: _____

DATE: _____ TITLE: _____



ELECTRICAL SPECIFICATIONS

- Turns Ratio: (P2 ~ P3) : (J1 ~ J2) :1:1 ±3%
(P4 ~ P5) : (J3 ~ J6) :1:1 ±3%
- Inductance: (P2 ~ P3) 350uH min. @ 0.1V, 100KHZ, 8mA DC Bias
(P4 ~ P5) 350uH min. @ 0.1V, 100KHZ, 8mA DC Bias
- Leakage Inductance: P2 ~ P3 (with J1 and J2 Short): 0.35uH Max.
P4 ~ P5 (with J3 and J6 Short): 0.35uH Max. @ 1 MHz
- Interwinding Capacitor: (P2 ~ P3) : (J1 ~ J2): 35pF max. @ 1MHz
(P4 ~ P5) : (J3 ~ J6): 35pF max @ 1MHz
- DC Resistance: (J1 ~ J2) : (J3 ~ J6): 1.2 Ohms Max.
- Return Loss: 1MHz to 30MHz: -18dB MIN
30MHz to 60MHz: -12dB MIN
60MHz to 80MHz: -18dB MIN
- Dielectric Withstanding: (P2~P3) : (J1~J2): 1500 VAC OR 2250VDC
(P4~P5) : (J3~J6): 1500 VAC OR 2250VDC
- Insertion Loss: 100KHZ to 100MHz: -1.2dB MAX
- Cross Talk: 1MHz to 100MHz: -35dB TYP
- Common to Common mode Attenuation: 30MHz to 100MHz: -30dB TYP

UNLESS OTHERWISE SPECIFIED
ALL DIMENSIONS ARE INCHES [MM]
TOLERANCES: EXCEPT AS NOTED
INCHES HOLES

.X	± .10	Ø.X	± .10
.XX	± .020	Ø.XXX	± .015
.XXX	± .015	Ø.XXX	± .010

APPROVALS

DRAWN	AY	DATE	10/19/10
CHECKED	AW	DATE	10/19/10

ADAM TECH
909 Ratway Avenue, Union, NJ 07083
Phone: 908-687-5000 Fax: 908-687-5710

MODULAR JACK GANGED, 1 PORT, 8P6C
W/ LED1 ORANGE/GREEN, LED2 YELLOW

SIZE	PART NO.	REV.
X	MTJ-86SAX1-FSP-PG-LL-M41	A
REF:	S0003C	SCALE: NTS
		SHEET 2 OF 2