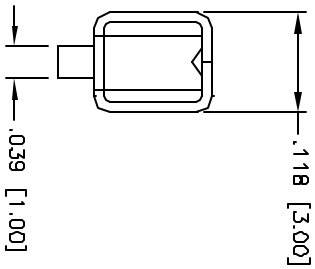
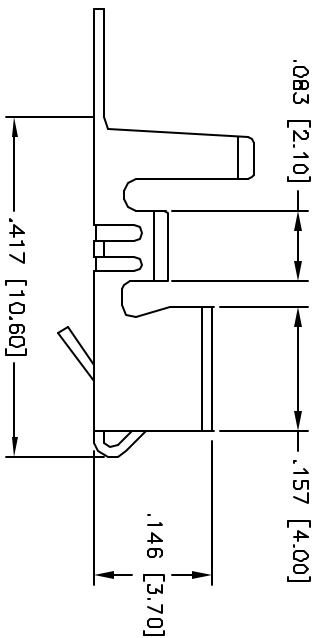
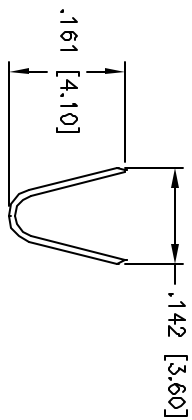
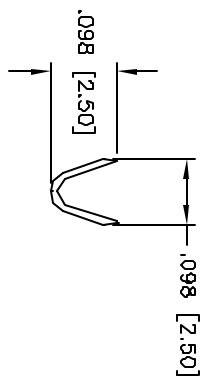
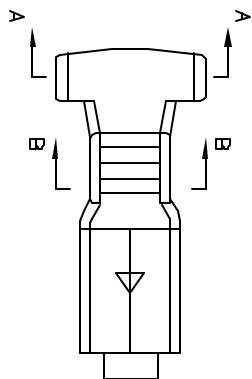


| Rev | AWO # | Description | Date | Appr |
|-----|-------|-------------|---------|------|
| - | | RELEASED | 4/12/05 | |

APPROVED: _____
 DATE: _____ TITLE: _____



SPECIFICATIONS:

Material:

Contact: Brass

Plating:

Tin over Copper underplate overall

Electrical:

Wire range: 18-24 AWG

Operating voltage: 250 VAC max

Current rating: 5 Amps max

Insulation resistance: 1,000 Mohms min

Dielectric withstanding voltage: 1,500 VAC for 1 minute

Temperature Rating:

Operating temperature: -25°C to +85°C

Packaging:

B = 1,000 pieces loose cut

R = 4,000 pieces on reel

Environmental:

Lead free, RoHS compliant



| UNLESS OTHERWISE SPECIFIED ALL DIMENSIONS ARE NICHES [MM] TOLERANCES: EXCEPT AS NOTED | |
|---|--------|
| INCHES | ± .010 |
| XX | ± .020 |
| XXX | ± .015 |
| ØXX | ± .010 |
| ØXXX | ± .010 |

| APPROVALS | DATE |
|-----------|------|
| DRAWN | SS |
| CHECKED | |
| APPROVED | |

| DATE |
|---------|
| 4/12/05 |

| SIZE | PART NO. |
|------|----------|
| X | MTC-CX |

ADAM TECH
 909 Rahway Avenue, Union, NJ 07083
 Phone: 908-687-5000 Fax: 908-687-5710

CRIMP CONTACT

| SCALE | SHEET | OF |
|-------|-------|----|
| NIB | 1 | 1 |