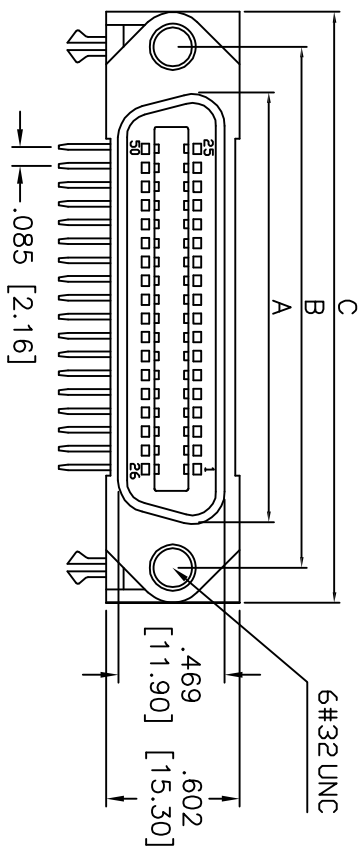
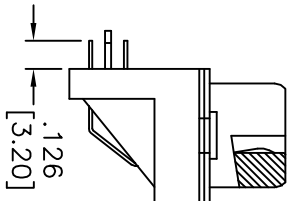
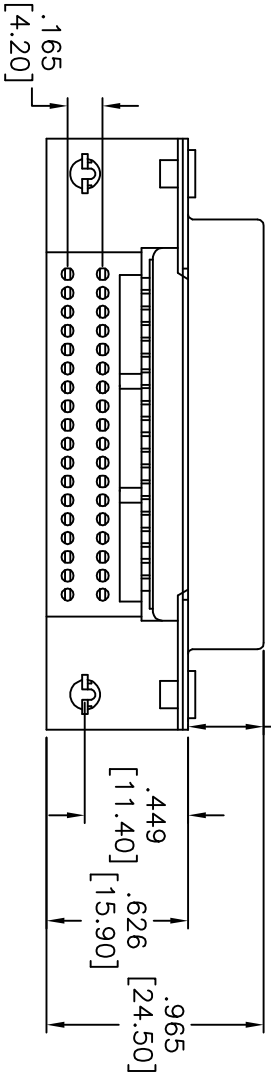
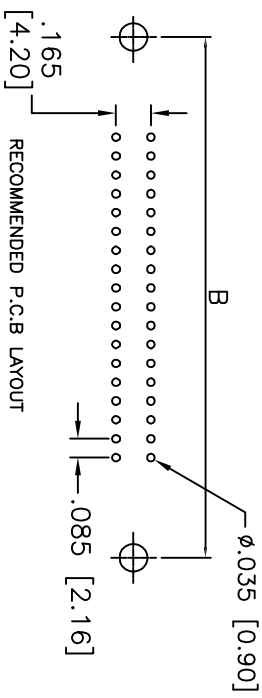


Rev	AWO #	Description	Date	Appr
-		RELEASED	9/3/10	

APPROVED: _____
 DATE: _____ TITLE: _____



.335 [8.50]



MRXX	NO. OF CONTACTS	DIMENSIONS		
		A	B	C
MR14	14	.992 [25.20]	1.417 [36.00]	1.728 [43.90]
MR24	24	1.417 [36.00]	1.843 [46.80]	2.154 [54.70]
MR36	36	1.925 [48.90]	2.350 [59.70]	2.665 [67.70]
MR50	50	2.523 [64.10]	2.949 [74.90]	3.260 [82.80]

SPECIFICATIONS:

Material:
 Insulator: PBT, glass reinforced, rated UL 94V-0
 Insulator color: Blue
 Contacts: Phosphor Bronze
 Shell: Steel, Nickel plated
 Hood: Steel, Nickel plated
 Plating:
 Gold flash over Nickel underplate on mating area,
 Tin over Copper underplate on tails

Electrical:
 Current rating: 5 Amp max
 Contact resistance: 25 mohms max
 Insulation resistance: 1,000 Mohms min
 Dielectric withstanding voltage: 1,000 VAC for 1 minute
 Temperature Rating:
 Operating temperature: -55°C to +105°C

Environmental:
 Lead free, RoHS compliant
 Recommended soldering temp: 235°C for 5 seconds

ADAM TECH

909 Rahway Avenue, Union, NJ 07083
 Phone: 908-687-5000 Fax: 908-687-5710

ITDC MINIATURE RIBBON PLUG
 METAL SHELL, METAL HOOD

UNLESS OTHERWISE SPECIFIED ALL DIMENSIONS ARE INCHES [MM]		TITLE	
TOLERANCES: EXCEPT AS NOTED		ADAM TECH	
INCHES		909 Rahway Avenue, Union, NJ 07083	
.X	± .10	ØXX	± .10
.XX	± .020	ØXXX	± .015
.XXX	± .015	ØXXXX	± .010
APPROVALS		DATE	
DRAWN	AY	9/3/10	
CHECKED	JL	9/3/10	
APPROVED		SIZE	PART NO.
		X	MRXX-SD-36-F
		REF:	S00033T
		SCALE:	NTS
		SHEET	1 OF 1

