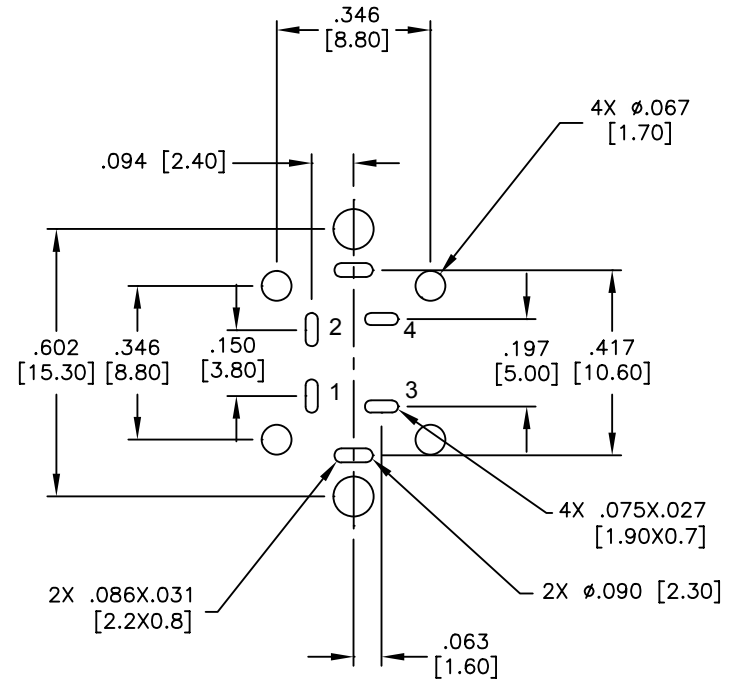
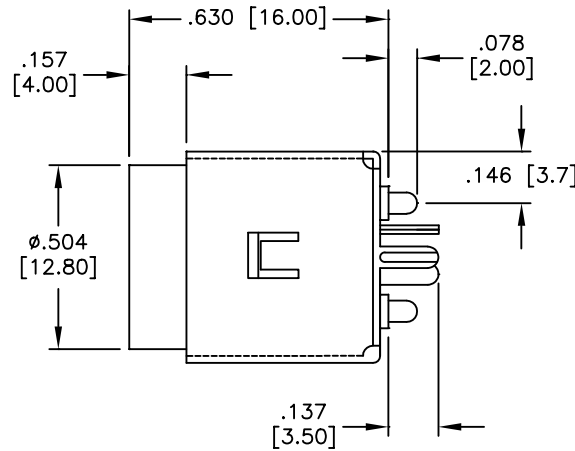
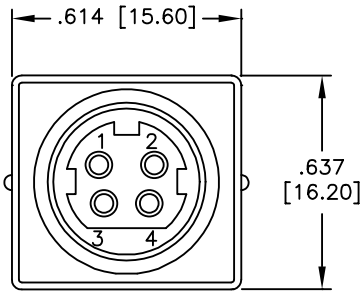


APPROVED: \_\_\_\_\_

DATE: \_\_\_\_\_ TITLE: \_\_\_\_\_

Rev	AWO #	Description	Date	Apr
-	8351	RELEASED	1/10/08	
A		CORRECTED DIMENSIONS	02/11/08	BAS
B		REDRAWN	9/7/10	



RECOMENDED PCB LAYOUT  
(TOP VIEW)

**SPECIFICATIONS:**

**Material:**

Insulator: PBT, glass filled, rated UL 94V-0

Insulator color: Black

Contacts: Phosphor Bronze

Shield: Copper Alloy, Tin plated

**Plating:**

Silver over Nickel underplate overall

**Electrical:**

Operating voltage: 30 VDC max.

Current rating: 7.5 Amps max.

**A** Contact resistance: 20 mohms max. initial

Insulation resistance: 250 Mohms min.

Dielectric withstanding voltage: 500 VAC for 1 minute

**Temperature Rating:**

Operating temperature: -25°C to +70°C

**Environmental:**

Lead free, RoHS compliant.

Recommended soldering temp: 235°C for 5 sec.



<p>UNLESS OTHERWISE SPECIFIED ALL DIMENSIONS ARE INCHES [MM] TOLERANCES: EXCEPT AS NOTED INCHES HOLES</p>		<p><b>ADAM TECH</b> 909 Rahway Avenue, Union, NJ 07083 Phone: 908-687-5000 Fax: 908-687-5710</p>	
<p>APPROVALS</p>		<p>DATE</p>	
<p>DRAWN</p>	<p>SS</p>	<p>1/10/08</p>	
<p>CHECKED</p>		<p>SIZE</p>	<p>PART NO.</p>
<p>APPROVED</p>		<p>X</p>	<p>MPJ-4P-V-S</p>
<p>REF: S00002C</p>		<p>SCALE: NTS</p>	<p>REV. B</p>
<p>TITLE</p>		<p>MINI DIN POWER JACK, SHIELDED VERTICAL, ALL POWER CONTACTS</p>	
<p>SHEET 1 OF 1</p>			