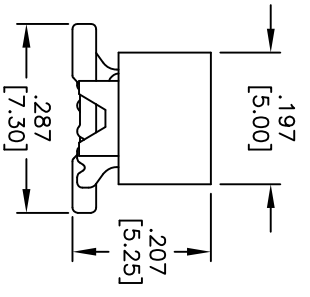
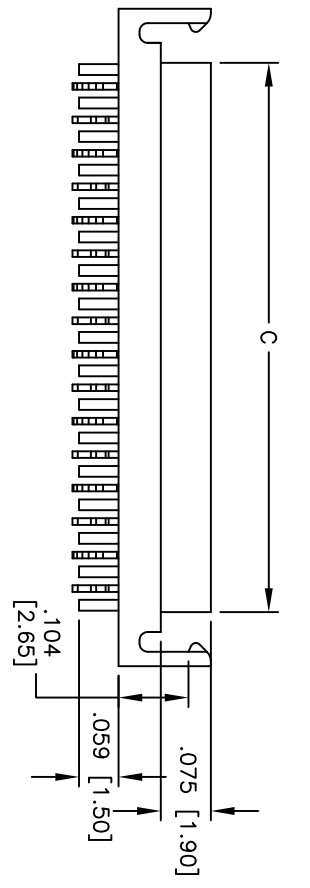
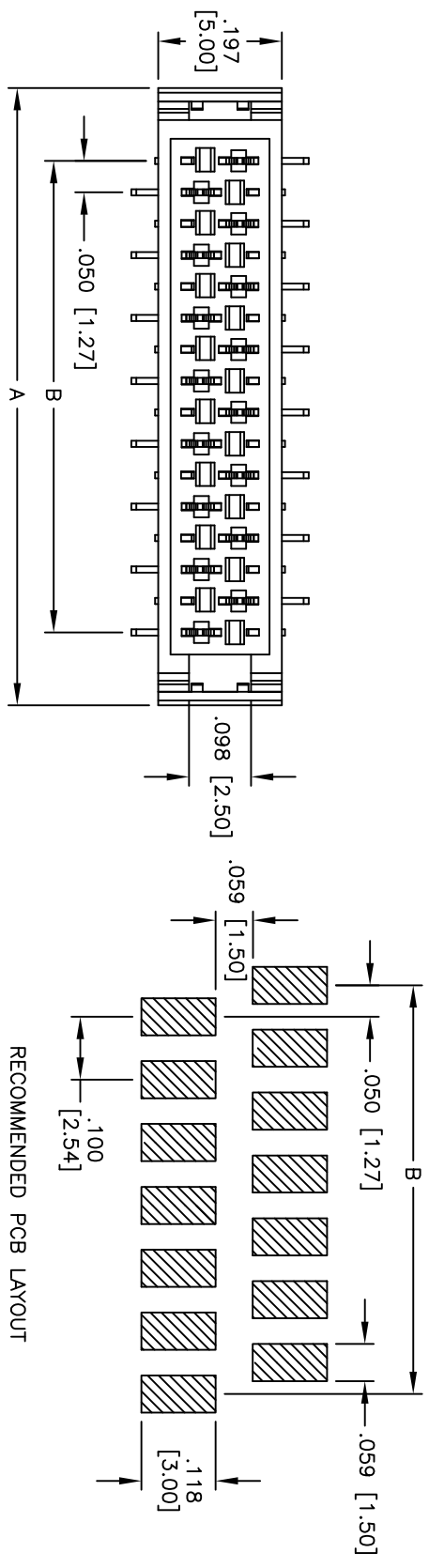


Rev	AWO #	Description	Date	Appr
-		RELEASED	3/17/09	

APPROVED: \_\_\_\_\_  
 DATE: \_\_\_\_\_ TITLE: \_\_\_\_\_



**PACKAGED ON TAPE & REEL**

Positions: 2 thru 40 per row  
 A = .050 [1.27] x No. of Positions + .182 [4.62]  
 B = .050 [1.27] x No. of Spoces  
 C = .050 [1.27] x No. of Positions + .020 [0.52]

**ADAM TECH**  
 909 Railway Avenue, Union, NJ 07083  
 Phone: 908-687-5000 Fax: 908-687-5710

TIN PLATED  
 .050 [1.27] MINI FLEX FEMALE, SMT TYPE

**SPECIFICATIONS:**

Material: Insulator: Hi-temp thermoplastic, rated UL 94V-0  
 Insulator color: Black  
 Contacts: Phosphor Bronze  
 Plating: Tin over Copper underplate overall  
 Electrical:  
 Voltage rating: 30V AC/DC  
 Current rating: 1A AC/DC  
 Contact resistance: 20 mohms max.  
 Insulation resistance: 1,000 Mohms min.  
 Dielectric withstanding: 500V AC for 1 minute  
 Temperature Rating:  
 Operating temperature: -40°C to +105°C  
 Environmental:  
 Lead free, RoHS compliant  
 Recommended soldering temp: 260°C for 5 seconds



UNLESS OTHERWISE SPECIFIED	
ALL DIMENSIONS ARE INCHES [MM]	
TOLERANCES: EXCEPT AS NOTED	
INCHES	HOLDS
.X ± .10	ØXX ± .10
.XX ± .020	ØXXX ± .015
.XXX ± .015	ØXXXX ± .010
APPROVALS	DATE
DRAWN	DY
CHECKED	
APPROVED	

DATE	3/17/09	TITLE	.050 [1.27] MINI FLEX FEMALE, SMT TYPE
SIZE	X	PART NO.	MPF-XX-SMT-T-T/R
REF:	S00068T	SCALE:	NTS
SHEET	1 OF 1	REV.	