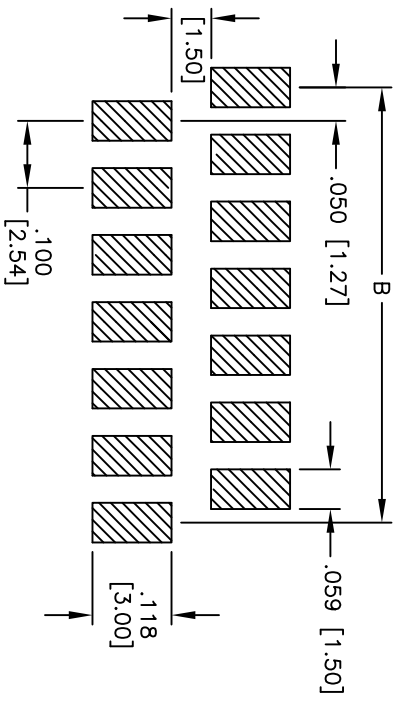
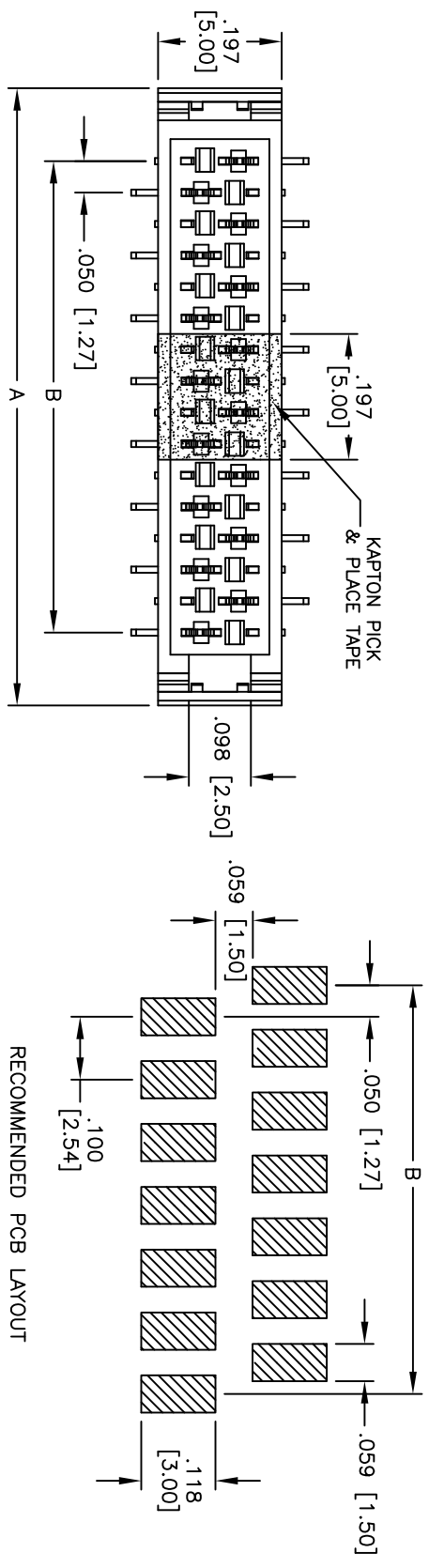
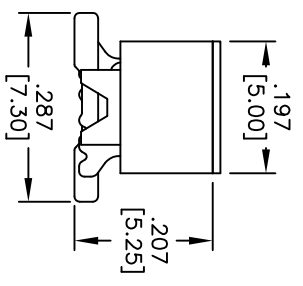
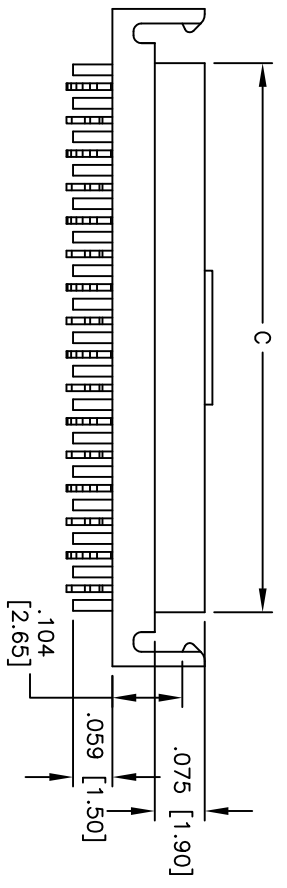


Rev	AWO #	Description	Date	Appr
-		RELEASED	1/20/10	

APPROVED: _____
 DATE: _____ TITLE: _____



RECOMMENDED PCB LAYOUT



SPECIFICATIONS:

- Material: Insulator: Hi-temp thermoplastic, rated UL 94V-0
- Insulator color: Black
- Contacts: Phosphor Bronze
- Plating: Tin over Copper underplate overall
- Electrical: Voltage rating: 30V AC/DC
- Current rating: 1A AC/DC
- Contact resistance: 20 mohms max.
- Insulation resistance: 1,000 Mohms min.
- Dielectric withstanding: 500V AC for 1 minute
- Temperature Rating: Operating temperature: -40°C to +105°C
- Environmental: Lead free, RoHS compliant
- Recommended soldering temp: 260°C for 5 seconds

Positions: 2 thru 40 per row
 A = .050 [1.27] x No. of Positions + .182 [4.62]
 B = .050 [1.27] x No. of Spoces
 C = .050 [1.27] x No. of Positions + .020 [0.52]

UNLESS OTHERWISE SPECIFIED
 ALL DIMENSIONS ARE INCHES [MM]
 TOLERANCES: EXCEPT AS NOTED
 INCHES HOLEES
 .X ± .10 ØXX ± .10
 .XX ± .020 ØXXX ± .015
 .XXX ± .015 ØXXXX ± .010
 APPROVALS DATE

ADAM TECH
 909 Rahway Avenue, Union, NJ 07083
 Phone: 908-687-5000 Fax: 908-687-5710
 TITLE: .050 [1.27] MINI FLEX FEMALE, SMT TYPE
 TIN PLATED

DRAWN	DY	1/20/10	SIZE	PART NO.	MPF-XX-SMT-T-KT	REV.
CHECKED			X			
APPROVED			REF:	S00066T	SCALE: NTS	SHEET 1 OF 1

