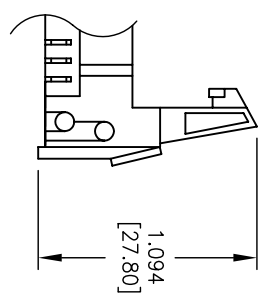
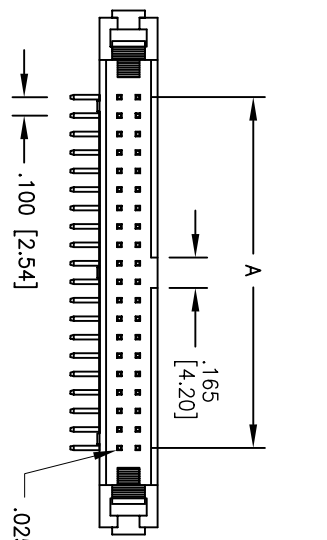
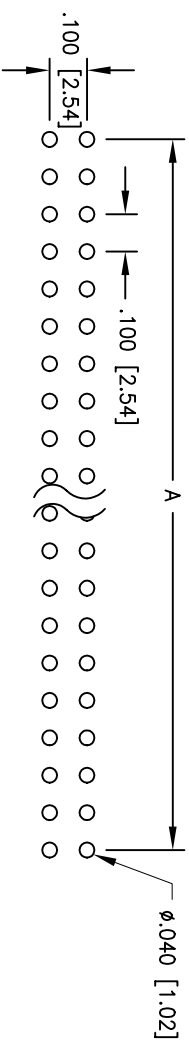
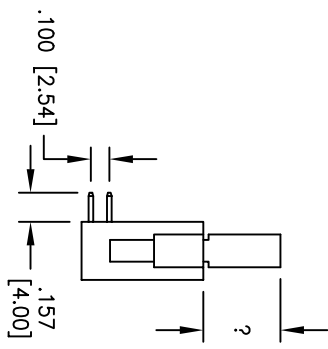
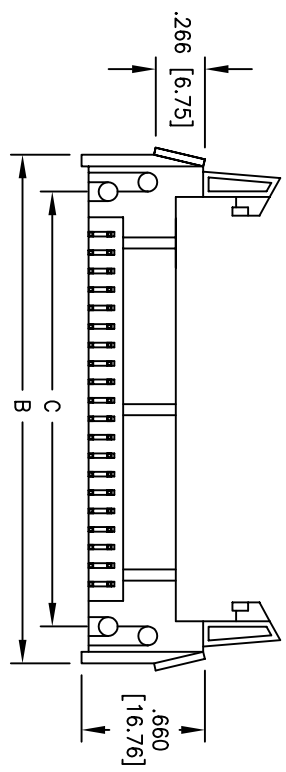


Rev	AWO #	Description	Date	Appr
-		RELEASED	9/29/04	

APPROVED: _____
 DATE: _____ TITLE: _____



Header with Long Ejector/Latch for Sockets with Strain Reliefs



PCB LAYOUT

SPECIFICATIONS:

- Material: Insulator: PBT, rated UL 94V-0
- Insulator color: Black
- Contacts: Brass
- Plating: Gold Flash over Nickel underplate overall
- Electrical:
 - Operating voltage: 250 VAC max
 - Current rating: 3 Amps max
 - Contact resistance: 20 mohms max
 - Insulation resistance: 5000 Mohms min @ 500 VDC
 - Dielectric withstanding voltage: 1000 VAC for 1 minute
- Temperature Rating: Operating temperature: -65°C to +125°C

A

ADAM TECH

909 Railway Avenue, Union, NJ 07083
 Phone: 908-687-5000 Fax: 908-687-5710

TITLE: LATCHED BOX HEADER, RIGHT ANGLE, PCB MOUNT, LONG EJECTOR LATCHES

UNLESS OTHERWISE SPECIFIED ALL DIMENSIONS ARE INCHES [MM]	
TOLERANCES: EXCEPT AS NOTED	
INCHES	HOLDS
.X ± .10	Ø.X ± .10
.XX ± .020	Ø.XX ± .015
.XXX ± .015	Ø.XXX ± .010
APPROVALS	DATE
DRAWN SS	9/29/04
CHECKED	
APPROVED	

SIZE	PART NO.	REV.
X	MHR-X-HUAL	-
SCALE:	NTS	SHEET 1 OF 2

6

5

4

3

2

1

6

5

4

3

2

1

D

C

B

A

D

C

B

A