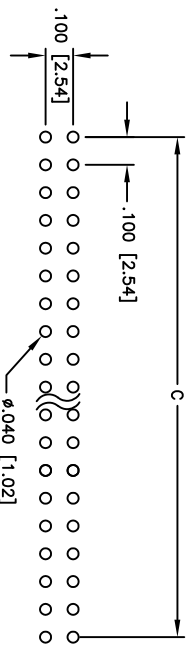
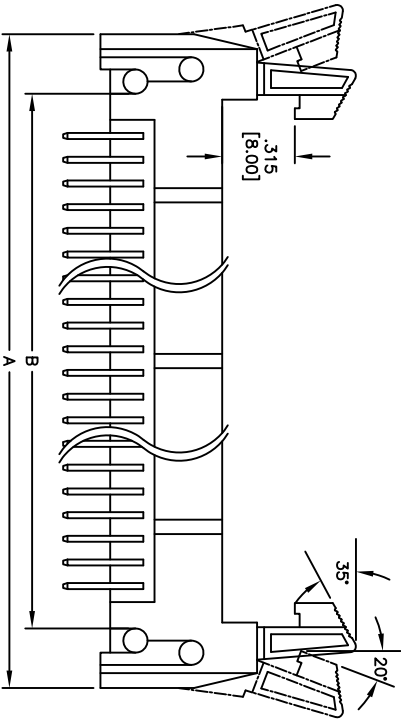
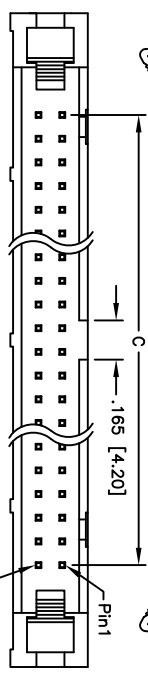
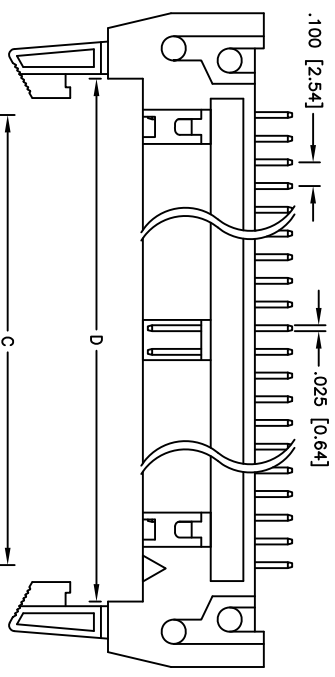
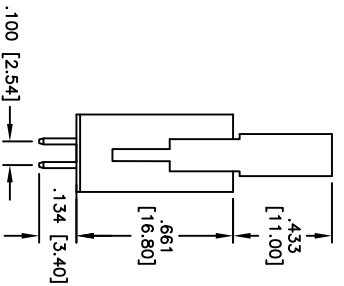


Rev	AWO #	Description	Date	Appr
-		RELEASED	3/25/10	

APPROVED: _____
 DATE: _____ TITLE: _____



RECOMMENDED PCB LAYOUT



SPECIFICATIONS:
 Material:
 Insulator: PBT, glass reinforced, rated UL 94V-0, color black
 Contacts: Brass
 Plating:
 Gold flash over Nickel underplate overall
 Electrical:

Current rating: 1 Amps max
 Contact Resistance: 10 mohm max
 Insulation resistance: 1000 Mohm min
 Dielectric withstanding voltage: 500 VAC for 1 minute
 Temperature Rating:
 Operating temperature: -55°C to +105°C
 Environmental:
 Lead free, RoHS compliant.
 Recommended soldering temp: 235°C for 5 sec.



Positions: 10, 14, 16, 20, 24, 26, 30, 34, 40, 50, 60, 64
 A = .100 [2.54] x No. of Spaces + .855 [21.71]
 B = .100 [2.54] x No. of Spaces + .454 [11.54]
 C = .100 [2.54] x No. of Spaces
 D = .100 [2.54] x No. of Spaces + .305 [7.74]

UNLESS OTHERWISE SPECIFIED
 ALL DIMENSIONS ARE MM [INCHES]
 TOLERANCES: EXCEPT AS NOTED

INCHES	HOLES
.X ± .10	ØX ± .10
.XX ± .020	ØXXX ± .015
.XXX ± .015	ØXXX ± .010

ADAM TECH

909 Rahway Avenue, Union, NJ 07083
 Phone: 908-687-5000 Fax: 908-687-5710

TITLE: LATCH BOX HEADER, VERTICAL TYPE
 LONG ELECTOR LATCHES

APPROVALS	DATE	SIZE	PART NO.	SCALE	SHEET 1 OF 1
DRAWN	DY	3/25/10	MHR-A-XX-VUAL	NTS	
CHECKED					
APPROVED					