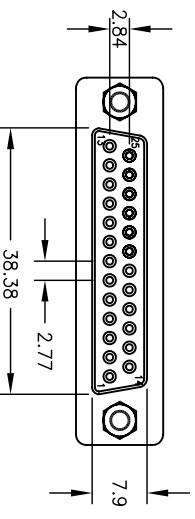
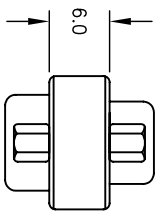
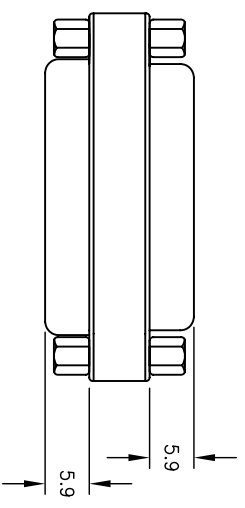
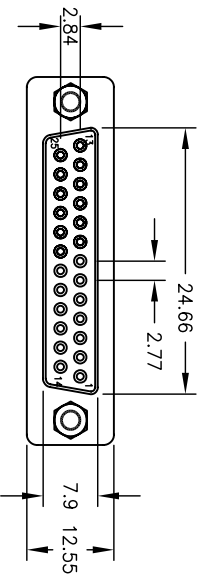


| Rev | AWO # | Description | Date   | Appr |
|-----|-------|-------------|--------|------|
| -   |       | RELEASED    | 7/5/07 |      |

APPROVED: \_\_\_\_\_  
 DATE: \_\_\_\_\_ TITLE: \_\_\_\_\_



PINOUT  
 15 FEMALE 15 FEMALE  
 1-----1  
 2-----2  
 3-----3  
 4-----4  
 5-----5

13-----13  
 14-----14  
 15-----15  
 16-----16  
 23-----23  
 24-----24  
 25-----25  
 G G

**SPECIFICATIONS:**

Material:  
 Insulator: PBT, glass reinforced, rated UL 94V-0  
 Insulator color: Black  
 Contacts: Brass  
 Shell: Steel, Nickel over copper underplate  
 Plating:  
 Contacts: Gold Flash over Nickel underplate  
 Operating voltage: 250 VAC max  
 Current rating: 3 Amps max  
 Insulation resistance: 1000 Mohms min @ 500 VDC  
 Dielectric withstanding voltage: 1000 VAC for 1 minute  
 Temperature Rating:  
 Operating temperature: -55°C to +105°C  
 Environmental:  
 Lead free, RoHS compliant.



UNLESS OTHERWISE SPECIFIED  
 ALL DIMENSIONS ARE MM [INCHES]  
 TOLERANCES: EXCEPT AS NOTED  
 INCHES  
 .X ± .10  
 .XX ± .020  
 .XXX ± .015  
 Holes  
 ØX ± .10  
 ØXX ± .015  
 ØXXX ± .010

**ADAM TECH**  
 909 Railway Avenue, Union, NJ 07083  
 Phone: 908-687-5000 Fax: 908-687-5710  
**MINI GENDER CHANGER, 25P FEMALE**  
**TO 25P FEMALE, JACK SCREWS**

| APPROVALS | DATE   |
|-----------|--------|
| SS        | 7/5/07 |
| CHECKED   |        |
| APPROVED  |        |

| SIZE | PART NO.          | REV. |
|------|-------------------|------|
| X    | MGC-25S-25S-JS-JS | -    |

SCALE: NTS SHEET 1 OF 1