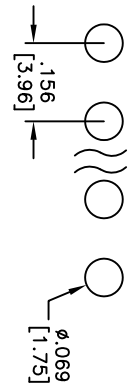
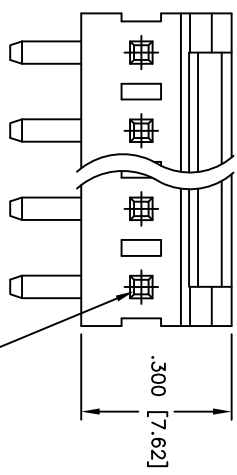
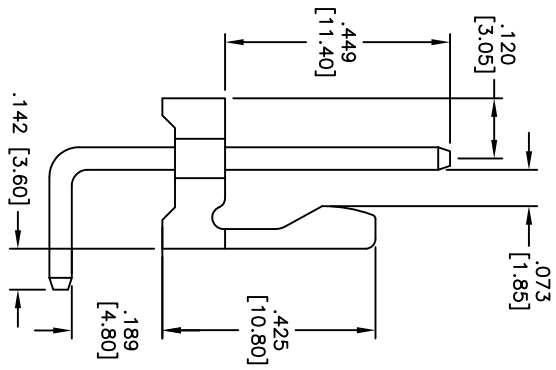
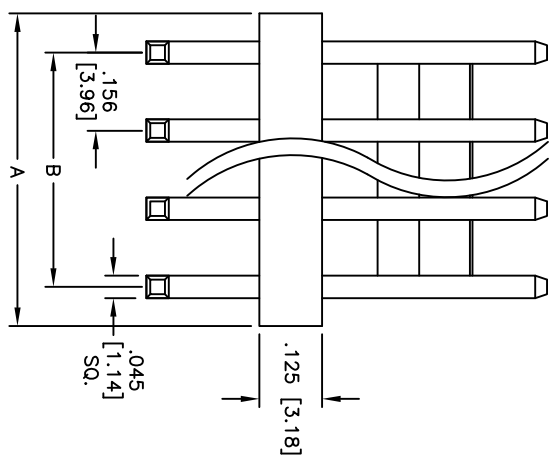


Rev	AWO #	Description	Date	Appr
-		RELEASED	6/17/11	

APPROVED: \_\_\_\_\_  
 DATE: \_\_\_\_\_ TITLE: \_\_\_\_\_



RECOMMENDED PCB LAYOUT



**SPECIFICATIONS:**  
 Material: PA66, glass reinforced, rated UL 94V-2  
 Insulator color: White  
 Contact: Brass, Tin or Ni plated

Positions: 2 thru 20  
 A = .156 [3.96] x No. of Positions  
 B = .156 [3.96] x No. of Spaces

Electrical:  
 Current rating: 7 Amps max  
 Contact resistance: 20mohms max  
 Insulation resistance: 1,000 Mohms min  
 Dielectric withstanding voltage: 1,000 VAC for 1 minute

UNLESS OTHERWISE SPECIFIED  
 ALL DIMENSIONS ARE INCHES [MM]  
 TOLERANCES: EXCEPT AS NOTED  
 INCHES HOLE SIZES

Operating temperature: -40°C to +85°C  
 Environmental:  
 Lead free, RoHS compliant  
 Recommended soldering temp: 235°C for 5 seconds

.X	± .10	ØXX	± .10
.XX	± .020	ØXXX	± .015
.XXX	± .015	ØXXXX	± .010

**ADAM TECH**  
 909 Rahway Avenue, Union, NJ 07083  
 Phone: 908-687-5000 Fax: 908-687-5710

TITLE: .156 [3.96] HEADER, STRAIGHT

Operating temperature: -40°C to +85°C  
 Environmental:  
 Lead free, RoHS compliant  
 Recommended soldering temp: 235°C for 5 seconds

DRAWN	DY	6/17/11
CHECKED		
APPROVED		

SIZE	PART NO.	REV.
X	LHD-XX-TRB	
REF: S00019C	SCALE: NTS	SHEET 1 OF 1

