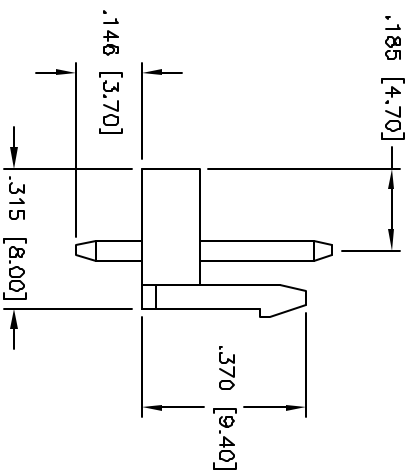
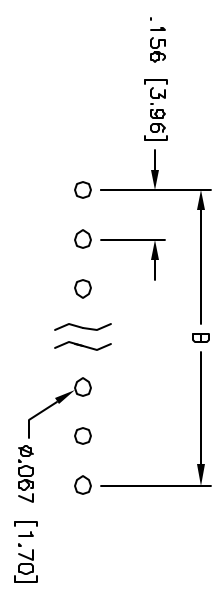
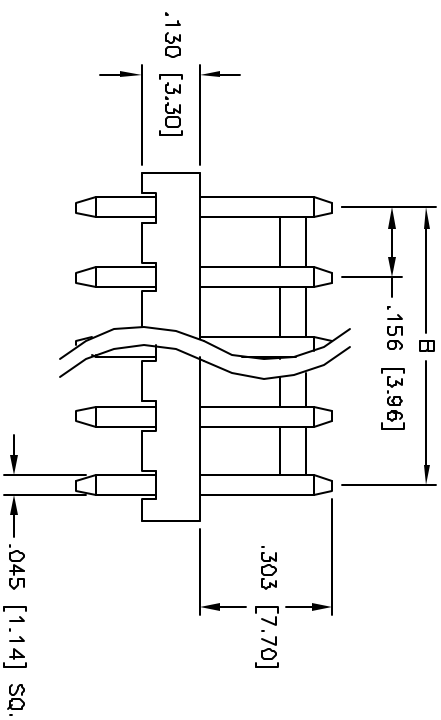
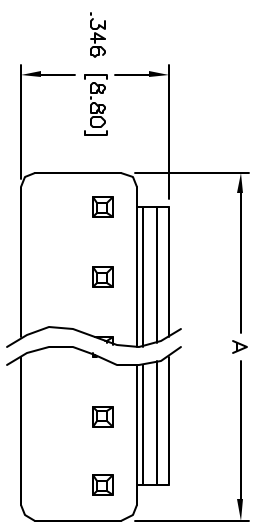


APPROVED: _____

DATE: _____ TITLE: _____



Positions: 2 thru 14
 A = .156 [3.96] x No. of Positions + .010 [0.25]
 B = .156 [3.96] x No. of Spaces

UNLESS OTHERWISE SPECIFIED
 ALL DIMENSIONS ARE NICHES [MM]
 TOLERANCES: EXCEPT AS NOTED

INCHES	MILLIMETERS
.10	± .10
.020	± .010
.015	± .010

APPROVALS	DATE
DRAWN: SS	4/12/05
CHECKED:	
APPROVED:	

ADAM TECH
 909 Rahway Avenue, Union, NJ 07083
 Phone: 908-687-5000 Fax: 908-687-5710

TITLE: **.156 [3.96] POWER HEADER STRAIGHT, WITH REAR LOCK**

REV.	DESCRIPTION	DATE	APP.
-	RELEASED	4/12/05	

SIZE	PART NO.	SCALE	SHEET	OF
X	LHC-XX-S/A3	NIB	1	1

SPECIFICATIONS:
 Material: Insulator: Nylon 66, rated UL 94V-0
 Insulator color: White
 Contacts: Brass
 Plating: Tin over Copper underplate overall
 Electrical:
 Operating voltage: 250 VAC max
 Current rating: 5 Amps max
 Contact resistance: 20 Mohms max
 Insulation resistance: 1,000 Mohms min
 Dielectric withstanding voltage: 1,500 VAC for 1 minute
 Temperature Rating:
 Operating temperature: -25°C to +85°C
 Environmental:
 Lead free, RoHS compliant
 Recommended soldering temp: 230°C for 5 seconds

