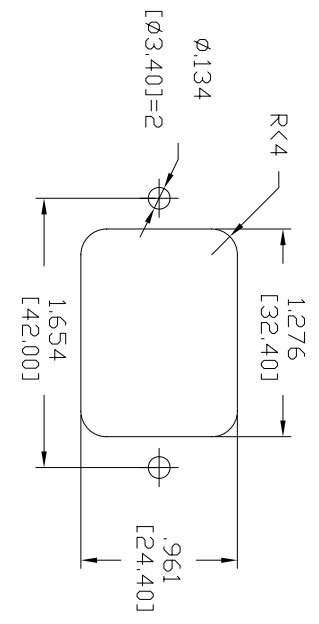
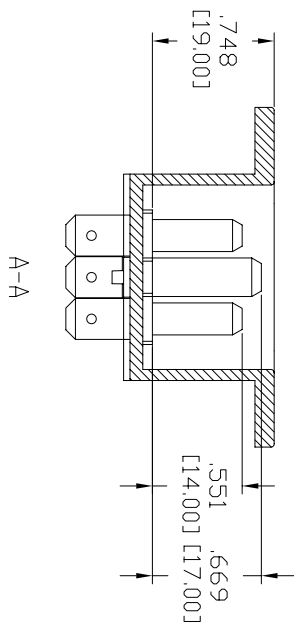
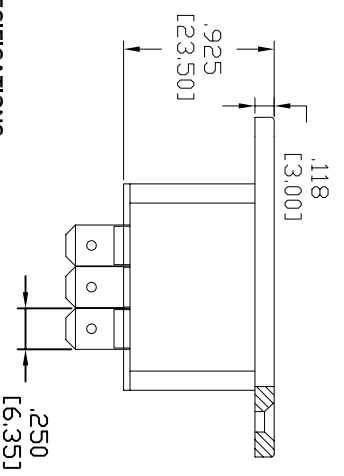
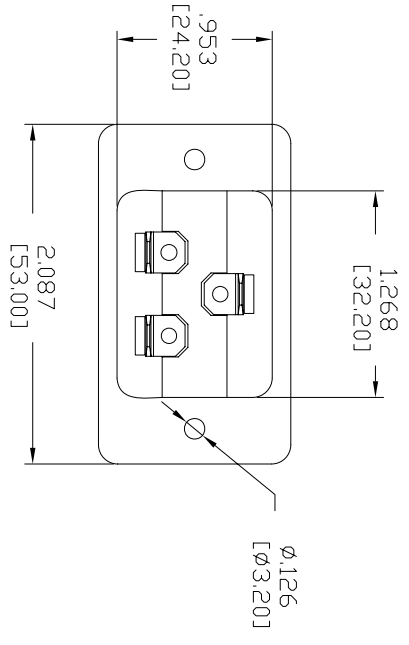
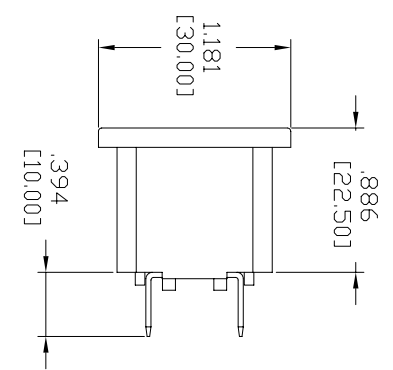
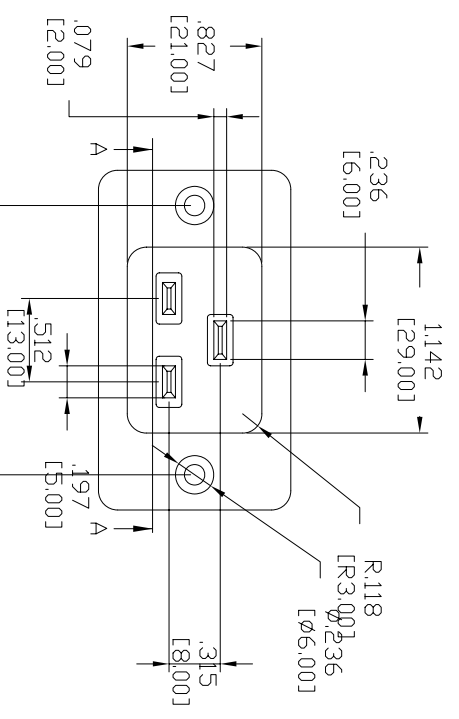


Rev	AWO #	Description	Date	Appr
-		RELEASED	9/15/06	

APPROVED: \_\_\_\_\_  
 DATE: \_\_\_\_\_ TITLE: \_\_\_\_\_



RECOMMENDED  
 PANEL CUT-OUT

**SPECIFICATIONS:**

**Material:** G.F. PBT rated UL 94V-0, black  
**Insulator:** Brass QQ-B-626  
**Contacts:** Brass QQ-B-626

**Plating:** Contacts/Terminals: 50  $\mu$ m bright nickel to QQ-N-290, Class 2, Grade C

**Electrical:**  
 Operation voltage: 250 VAC max  
 Current rating: 20A max UL/CSA 16A max VDE  
 Contact resistance: 20 mohm max  
 Insulation resistance: 100 Mohm min @ 500 VDC between adjacent contacts (75°F and 50% R.H.)  
 Dielectric withstanding voltage: 2000 VAC min rms

**Environmental:**  
 Operating temperature: -65°C to +85°C  
**Packaging:** Anti-static plastic bags or corrugated boxes  
**Environmental:** Lead free, RoHS compliant.

UNLESS OTHERWISE SPECIFIED ALL DIMENSIONS ARE INCHES [MM]	
TOLERANCES: EXCEPT AS NOTED	
INCHES	HOLES
.X ± .10	Ø.X ± .10
.XX ± .020	Ø.XX ± .015
.XXX ± .015	Ø.XXX ± .010
APPROVALS	DATE
DRAWN	SS
CHECKED	
APPROVED	

**ADAM TECH**  
 909 Rahway Avenue, Union, NJ 07083  
 Phone: 908-687-5000 Fax: 908-687-5710

TITLE	IEC MALE, 20 AMP, PANEL MOUNT	
SIZE	PART NO.	REV.
X	IEC-N-2	-
REF:	SCALE: NTS	SHEET 1 OF 1