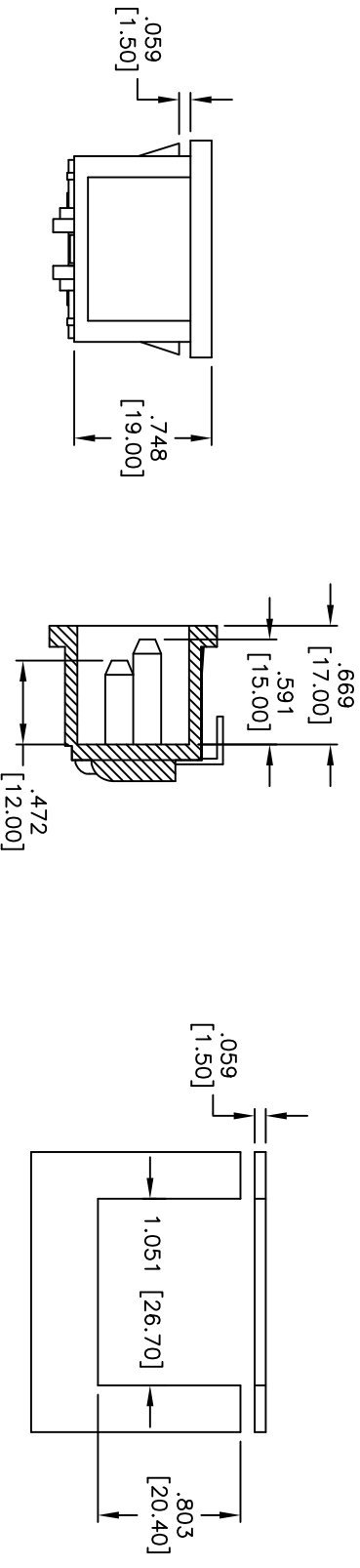
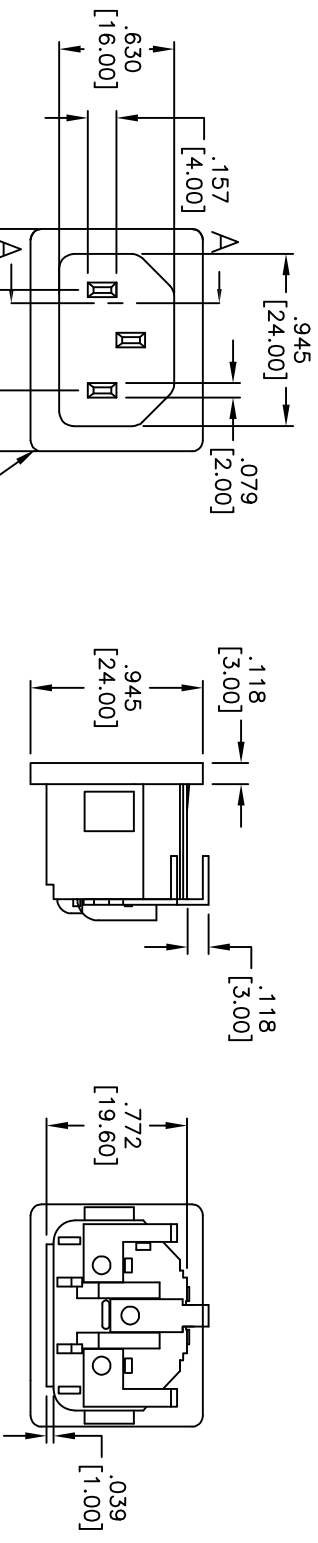


Rev	AWO #	Description	Date	Appr
-		RELEASED	9/7/10	

APPROVED: _____
 DATE: _____ TITLE: _____



SECTION A-A

RECOMMENDED PANEL CUT-OUT

SPECIFICATIONS:
 Material: Insulator: Nylon 66, glass reinforced, rated UL 94V-0
 Insulator color: Black
 Contacts: Brass, Nickel plated
 Plating: Nickel over Copper underplate overall
 PCB pins: Matte-Tin over Copper underplate
 Electrical:
 Operating voltage: 250 VAC
 Current rating: UL & CSA: 15 Amps max
 VDE: 10 Amps max
 Insulation resistance: 100 Mohms min @ 500 VDC
 Dielectric withstanding voltage: 2,000 VAC for 1 minute
 Temperature Rating:
 Operating temperature: -25°C to +70°C
 Environmental:
 Lead free, RoHS compliant
 Recommended soldering temp: 235°C for 5 seconds



ADAM TECH

909 Rahway Avenue, Union, NJ 07083
 Phone: 908-687-5000 Fax: 908-687-5710

TITLE: IEC MALE INLET, SNAP-IN PANEL MOUNT
 RIGHT ANGLE, PCB TAILS

UNLESS OTHERWISE SPECIFIED ALL DIMENSIONS ARE INCHES [MM]		TOLERANCES: EXCEPT AS NOTED	
.X	± .10	ØX	± .10
.XX	± .020	ØXX	± .015
.XXX	± .015	ØXXX	± .010
APPROVALS		DATE	
DRAWN	AY	9/7/10	
CHECKED	AH	9/7/10	
APPROVED			
SIZE	PART NO.	SCALE	REV.
X	IEC-J4C-150	NIS	-
REF:	S00037T	SHEET	1 OF 1