

6

5

4

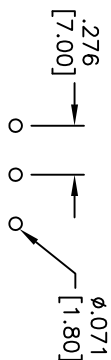
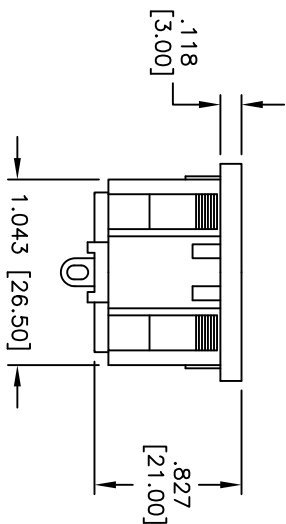
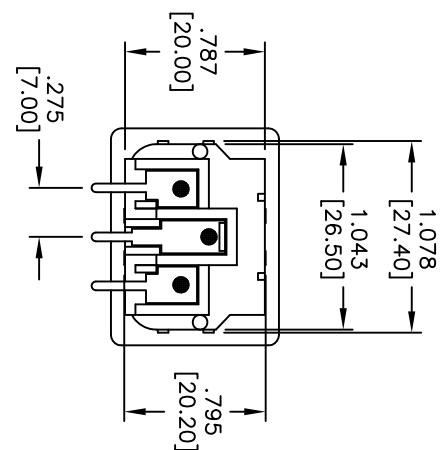
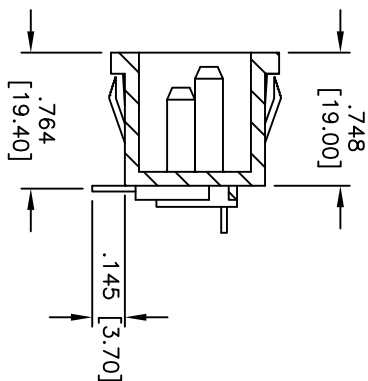
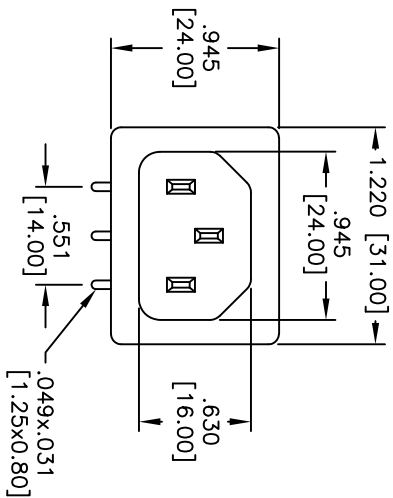
3

2

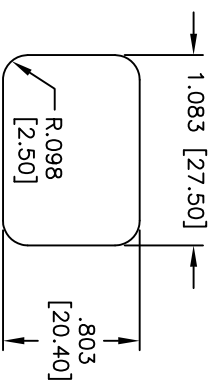
1

APPROVED: _____
 DATE: _____ TITLE: _____

Rev	AWO #	Description	Date	Appr
-		RELEASED	6/17/05	
A		UPDATED	7/10/07	



RECOMMENDED
PCB LAYOUT



RECOMMENDED PANEL CUT-OUT
THICKNESS: 0.8mm-3.0mm

SPECIFICATIONS:

- Material: Insulator: Nylon 66, glass reinforced, rated UL 94V-0
- Insulator color: Black
- Contacts: Brass
- Plating: Nickel over Copper underplate overall
- PCB pins: Tin over Copper underplate
- Electrical:
 - Operating voltage: 250 VAC
 - Current rating: UL & CSA: 15 Amps max
 - VDE: 10 Amps max
- Insulation resistance: 100 Mohms min @ 500 VDC
- Dielectric withstanding voltage: 2,000 VAC for 1 minute
- Temperature Rating:
 - Operating temperature: -25°C to +70°C
- Environmental: Lead free, RoHS compliant
- Recommended soldering temp: 235°C for 5 seconds

ADAM TECH

909 Rahway Avenue, Union, NJ 07083
 Phone: 908-687-5000 Fax: 908-687-5710

TITLE: IEC MALE INLET, SNAP-IN PANEL MOUNT
 RIGHT ANGLE, PCB TAILS

UNLESS OTHERWISE SPECIFIED ALL DIMENSIONS ARE INCHES [MM]	
TOLERANCES: EXCEPT AS NOTED	
INCHES	HOLES
.X ± .10	Ø.X ± .10
.XX ± .020	Ø.XXX ± .015
.XXX ± .015	Ø.XXXX ± .010
APPROVALS	DATE
DRAWN	SS
CHECKED	
APPROVED	

SIZE	PART NO.	REV.
X	IEC-J-4	A
REF:	S00037T	SCALE: NTS
SHEET	1	OF 1

A

B

C

D

A

B

C

D

6

5

4

3

2

1