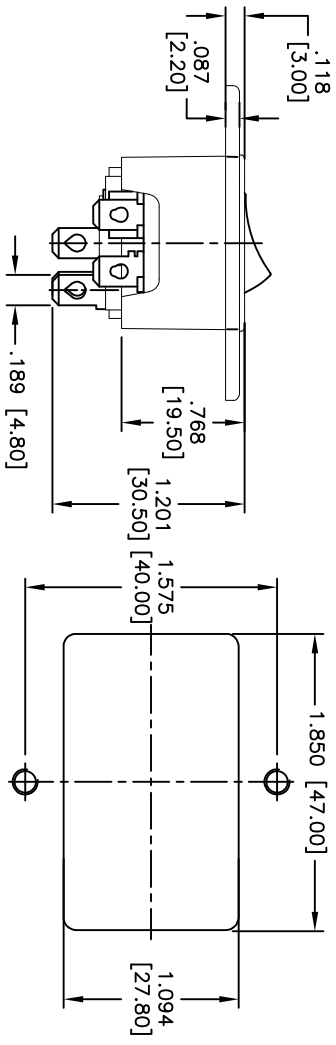
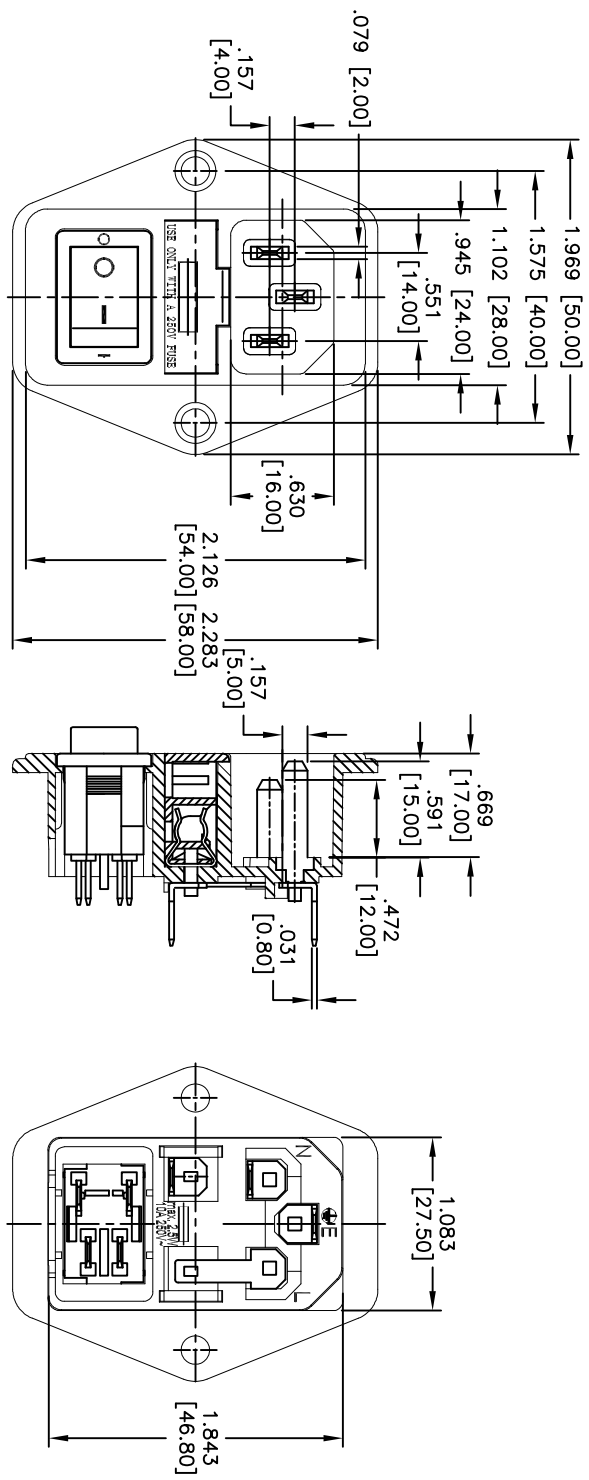


Rev	AWO #	Description	Date	Appr
-		RELEASED	10/27/10	

APPROVED: \_\_\_\_\_  
 DATE: \_\_\_\_\_ TITLE: \_\_\_\_\_



RECOMMENDED PANEL CUT-OUT

**SPECIFICATIONS:**

Material: Thermoplastic, glass reinforced, rated UL 94V-0  
 Insulator color: Black  
 Contacts: Brass  
 Plating: Tin over Copper underplate overall

Electrical:  
 Operating voltage: 250 VAC  
 Current rating: UL & CSA: 15 Amps max

VDE: 10 Amps max  
 Dielectric withstanding voltage: 2,000 VAC for 1 minute  
 Temperature Rating: Operating temperature: -25°C to +70°C

Environmental:  
 Lead free, RoHS compliant  
 Recommended soldering temp: 235°C for 5 seconds

**ADAM TECH**

909 Rahway Avenue, Union, NJ 07083  
 Phone: 908-687-5000 Fax: 908-687-5710

TITLE: IEC MALE, FUSED INLET WITH SWITCH  
 SCREW ON PANEL MOUNT

UNLESS OTHERWISE SPECIFIED ALL DIMENSIONS ARE INCHES [MM] TOLERANCES: EXCEPT AS NOTED INCHES		HOLE SIZES		DATE	
.X	± .10	ØX	± .10		
.XX	± .020	ØXX	± .015		
.XXX	± .015	ØXXX	± .010		
APPROVALS					
DRAWN	AY	DATE	10/27/10	SIZE	PART NO.
CHECKED	AH	DATE	10/27/10	REF:	S00060T
APPROVED		DATE		SCALE:	NTS