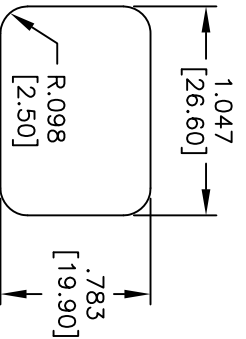
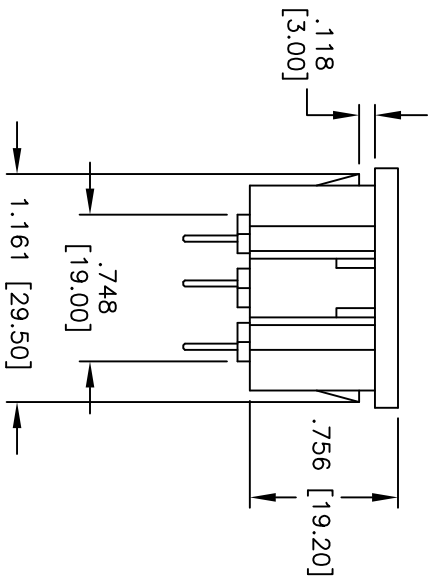
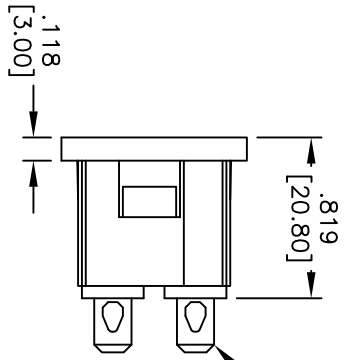
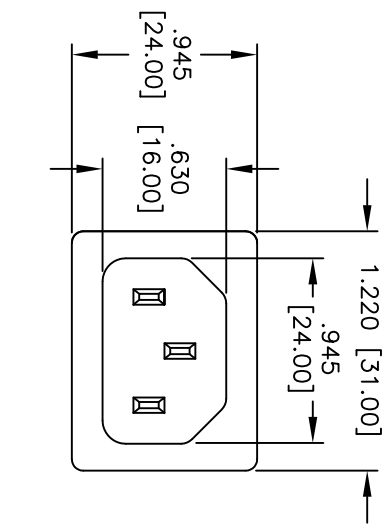


Rev	AWO #	Description	Date	Appr
-		RELEASED	4/22/10	

APPROVED: _____
 DATE: _____ TITLE: _____



RECOMMENDED
 PANEL CUTOUT

SPECIFICATIONS:
 Material: Nylon 66, glass reinforced, rated UL 94V-0
 Insulator color: Black
 Contacts: Brass
 Plating: Tin over Copper underplate overall

Electrical:
 Operating voltage: 250 VAC
 Current rating: UL & CSA: 15 Amps max
 VDE: 10 Amps max

Insulation resistance: 100 Mohms min @ 500 VDC
Dielectric withstanding voltage: 2,000 VAC for 1 minute
Temperature Rating:
 Operating temperature: -25°C to +70°C
 Environmental:
 Lead free, RoHS compliant



UNLESS OTHERWISE SPECIFIED
 ALL DIMENSIONS ARE MM [INCHES]
 TOLERANCES: EXCEPT AS NOTED
 INCHES

.X	± .10	ØXX	± .10
.XX	± .020	ØXXX	± .015
.XXX	± .015	ØXXXX	± .010

APPROVALS

DATE	
------	--

DRAWN	DY	4/22/10
CHECKED		
APPROVED		

ADAM TECH
 909 Rahway Avenue, Union, NJ 07083
 Phone: 908-687-5000 Fax: 908-687-5710

TITLE
**IEC MALE INLET, SNAP-IN PANEL MOUNT,
 3.0mm PANEL, .187 QUICK CONNECTS**

SIZE	PART NO.	SCALE	SHEET	REV.
X	IEC-C-1-300	NTS	1 OF 1	-
REF:	S00037T			