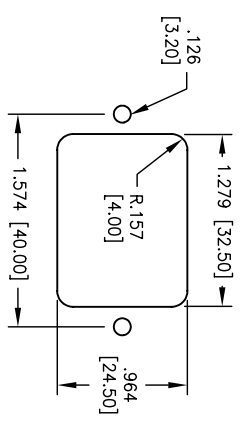
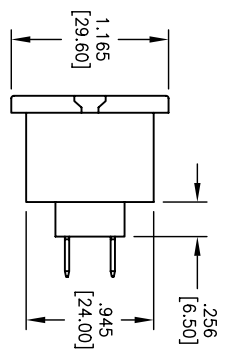
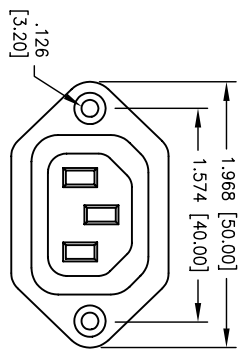
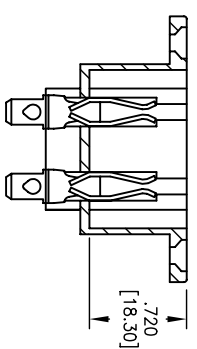
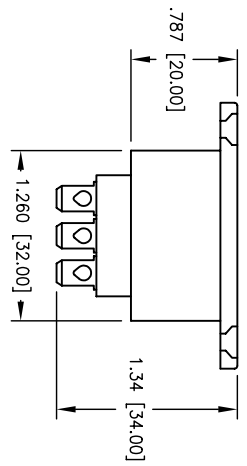


Rev	AWO #	Description	Date	Appr
-		RELEASED	8/13/04	

APPROVED: \_\_\_\_\_ TITLE: \_\_\_\_\_  
 DATE: \_\_\_\_\_



RECOMMENDED  
 PANEL CUT-OUT



TERMINAL OPTIONS	
1	.187 Q.C.
2	.250 Q.C.
5	.157 Solder

**SPECIFICATIONS:**

**Material:**  
 Insulator: PBT, glass reinforced, rated UL 94V-0  
 Insulator color: Black  
 Contacts: Phosphor Bronze  
 Plating:  
 Nickel over copper underplate  
**Electrical:**  
 Operating voltage: 250 VAC max  
 Current rating: UL & CSA: 15 Amps max  
 VDE: 10 Amps max  
 Insulation resistance: 100 Mohms min @ 500 VDC  
 Dielectric withstanding voltage: 2000 VAC for 1 minute  
 Temperature Rating:  
 Operating temperature: -25°C to +70°C

UNLESS OTHERWISE SPECIFIED ALL DIMENSIONS ARE INCHES [MM] TOLERANCES: EXCEPT AS NOTED	
INCHES	HOLES
.X ± .10	ØXX ± .10
.XX ± .020	ØXXX ± .015
.XXX ± .015	ØXXXX ± .010
APPROVALS	DATE
DRAWN SS	8/13/04
CHECKED	
APPROVED	

**ADAM TECH**  
 909 Rahway Avenue, Union, NJ 07083  
 Phone: 908-687-5000 Fax: 908-687-5710

TITLE: IEC CONNECTOR, FEMALE OUTLET  
 IEC, C13, FLANGE MOUNT

SIZE	PART NO.	REV.
X	IEC-B-X	-
REF.	SCALE: NTS	SHEET 1 OF 1