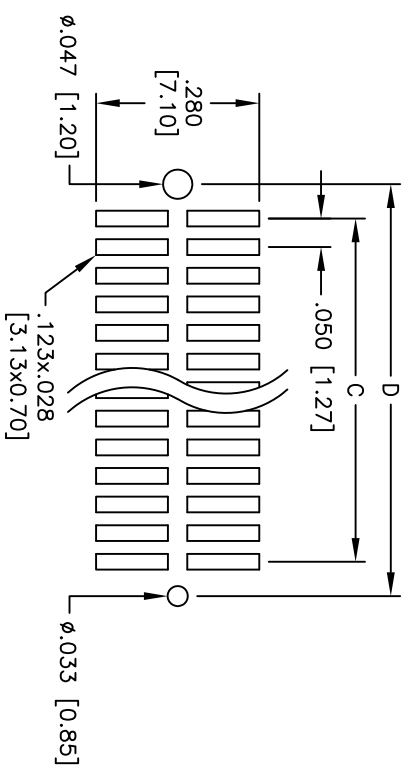
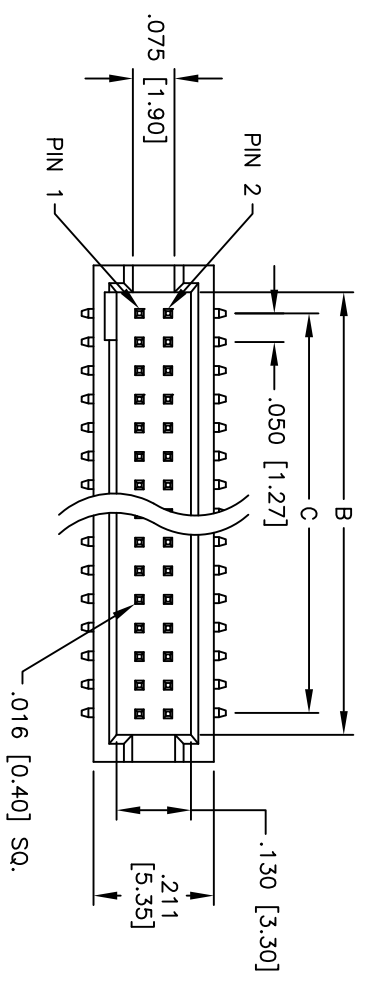
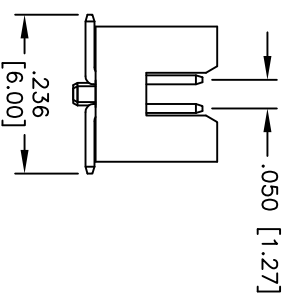
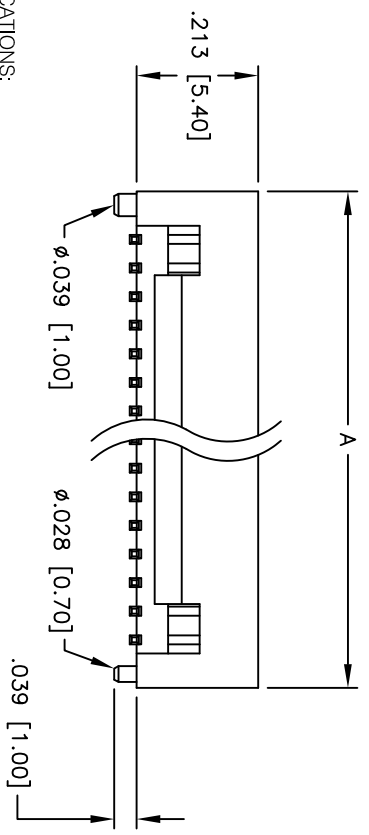


Rev	AWO #	Description	Date	Appr
-		RELEASED	01/11/07	

APPROVED: _____
 DATE: _____ TITLE: _____



PCB LAYOUT



SPECIFICATIONS:

Material:
 Insulator: Hi-temp thermoplastic, rated UL 94V-0
 Insulator color: Black
 Contacts: Brass
 Plating:
 Gold flash over Nickel underplate on mating area,
 Tin over Copper underplate on SMT tails
Electrical:
 Operating voltage: 250 VAC max.
 Current rating: 1 Amp max.
 Contact resistance: 20 mohms max. initial
 Insulation resistance: 5,000 Mohms min.
 Dielectric withstanding voltage: 1,000 VAC for 1 minute
Temperature Rating:
 Operating temperature: -40°C to +105°C
Environmental:
 Lead free, RoHS compliant.
 Recommended soldering temp: 260°C for 5 seconds

Positions: 10 thru 100
 A = .050 [1.27] x No. of Spaces + .168 [4.27]
 B = .050 [1.27] x No. of Spaces + .074 [1.87]
 C = .050 [1.27] x No. of Spaces
 D = .050 [1.27] x No. of Spaces + .127 [3.05]

UNLESS OTHERWISE SPECIFIED
 ALL DIMENSIONS ARE INCHES [MM]
 TOLERANCES: EXCEPT AS NOTED
 INCHES HOLE SIZES
 .X ± .10 ØXX ± .10
 .XX ± .020 ØXXX ± .015
 .XXX ± .015 ØXXXX ± .010

ADAM TECH

909 Railway Avenue, Union, NJ 07083
 Phone: 908-687-5000 Fax: 908-687-5710

.050 [1.27] SHROUDED HEADER, SMT

DRAWN		SS	1/10/05	TITLE	
CHECKED		AY	7/28/10	SIZE	PART NO.
APPROVED				X	HSH-XX-SG-SMT
APPROVALS		DATE		REF:	SCALE: NTS
				S00039T	SHEET 1 OF 1

