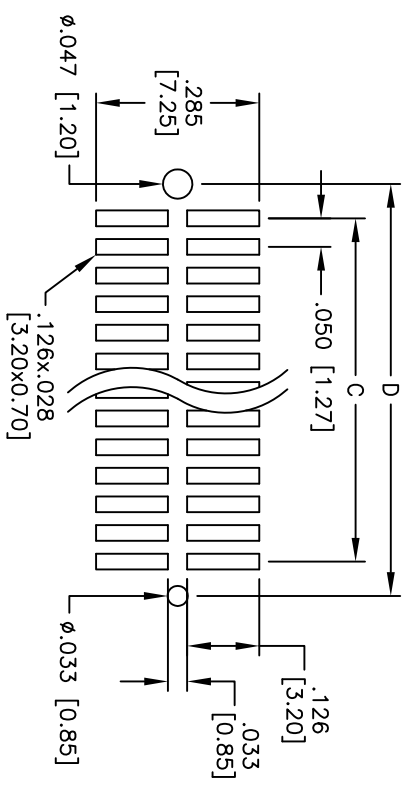
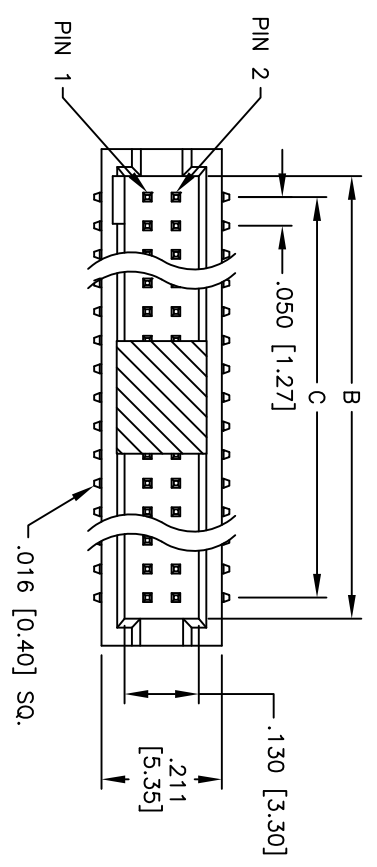
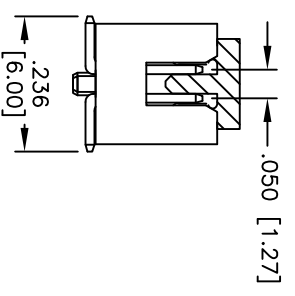
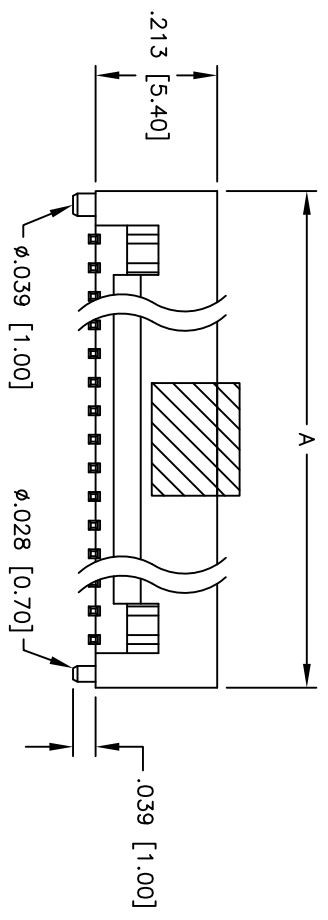


Rev	AWO #	Description	Date	Appr
-		RELEASED	6/09/09	

APPROVED: _____
 DATE: _____ TITLE: _____



RECOMMENDED PCB LAYOUT



SPECIFICATIONS:

Material:
 Insulator: Hi-temp thermoplastic, rated UL 94V-0
 Insulator color: Black
 Contacts: Brass
 Plating:
 Gold flash over Nickel underplate on contact area,
 Tin over Copper underplate on tails.
Electrical:
 Operating voltage: 250 VAC max.
 Current rating: 1 Amp max.
 Contact resistance: 20 mohms max. initial
 Insulation resistance: 5,000 Mohms min.
 Dielectric withstanding voltage: 1,000 VAC for 1 minute
 Temperature Rating:
 Operating temperature: -40°C to +105°C
Environmental:
 Lead free, RoHS compliant.
 Recommended soldering temp: 260°C for 5 sec.

Positions: 10 thru 100
 A = .050 [1.27] x No. of Spaces + .168 [4.27]
 B = .050 [1.27] x No. of Spaces + .074 [1.87]
 C = .050 [1.27] x No. of Spaces
 D = .050 [1.27] x No. of Spaces + .120 [3.05]

ADAM TECH

909 Railway Avenue, Union, NJ 07083
 Phone: 908-687-5000 Fax: 908-687-5710

TITLE: .050 [1.27] SHROUDED HEADER, SMT
 VERTICAL

UNLESS OTHERWISE SPECIFIED
 ALL DIMENSIONS ARE INCHES [MM]
 TOLERANCES: EXCEPT AS NOTED
 INCHES HOLE SIZES
 .X ± .10 ØXX ± .10
 .XX ± .020 ØXXX ± .015
 .XXX ± .015 ØXXXX ± .010
 APPROVALS
 DRAWN DY 6/09/09
 CHECKED AY 7/28/10
 APPROVED

SIZE	PART NO.	REV.
X	HSH-XX-T-SMT-PP	-
REF: S00039T	SCALE: NTS	SHEET 1 OF 1

