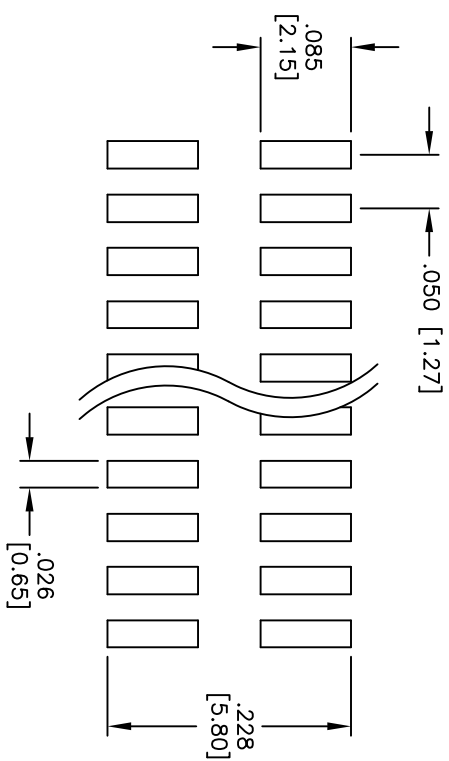
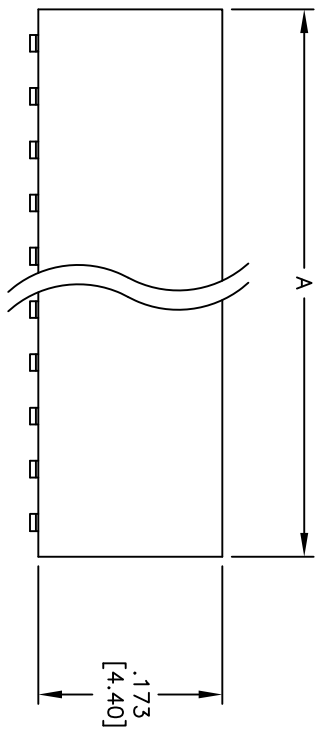
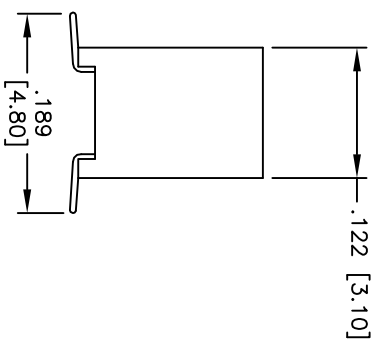
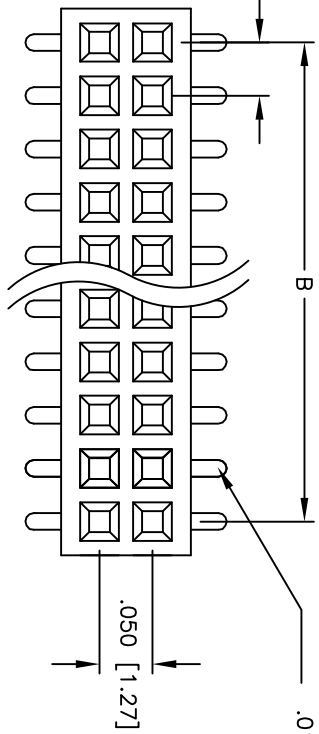


| Rev | AWO # | Description | Date    | Appr |
|-----|-------|-------------|---------|------|
| -   |       | RELEASED    | 2/26/10 |      |

APPROVED: \_\_\_\_\_  
 DATE: \_\_\_\_\_ TITLE: \_\_\_\_\_



Positions: 04 thru 100  
 A = .050 [1.27] x No. of Positions per Row + .014 [0.35]  
 B = .050 [1.27] x No. of Spaces

**SPECIFICATIONS:**  
 Material: Insulator: Nylon 46, rated UL 94V-0  
 Insulator color: Black  
 Contacts: Phosphor Bronze  
 Plating: Gold flash over Nickel underplate on contact area, Tin over Copper underplate on tails.  
 Electrical: Operating voltage: 250 VAC max.  
 Current rating: 1 Amp max.  
 Contact resistance: 20 mohms max. initial  
 Insulation resistance: 5,000 Mohms min.  
 Dielectric withstanding voltage: 1,000 VAC for 1 minute  
 Temperature Rating: Operating temperature: -40°C to +105°C  
 Environmental: Lead free, RoHS compliant  
 Recommended soldering temp: 260°C for 5 seconds



|   |             |                                       |              |
|---|-------------|---------------------------------------|--------------|
| UNLESS OTHERWISE SPECIFIED<br>ALL DIMENSIONS ARE INCHES [MM]<br>TOLERANCES: EXCEPT AS NOTED |             | TITLE                                 |              |
| .X ± .10  | ØXX ± .10   | .050 x .050 DUAL ROW RECEPTACLE STRIP |              |
| .XX ± .020  | ØXXX ± .015 | .173 [4.40] HEIGHT, SURFACE MOUNT     |              |
| .XXX ± .015   | ØXXX ± .010 |                                       |              |
| APPROVALS   |             | DATE                                  |              |
| DRAWN   | DY          | 2/26/10                               |              |
| CHECKED   |             |                                       |              |
| APPROVED  |             |                                       |              |
| SIZE  |             | PART NO.                              | REV.         |
| X   |             | HRS-2H-XX-SG-SMT                      | -            |
| REF:  |             | SCALE: NTS                            | SHEET 1 OF 1 |

**ADAM TECH**  
 909 Railway Avenue, Union, NJ 07083  
 Phone: 908-687-5000 Fax: 908-687-5710