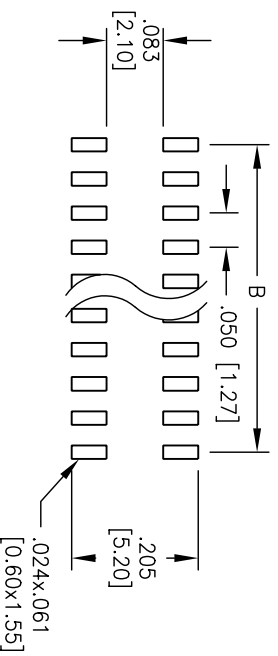
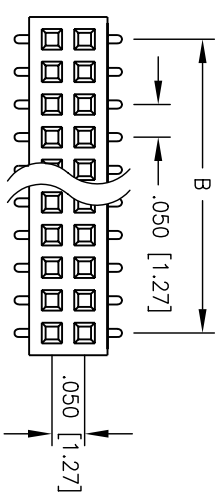
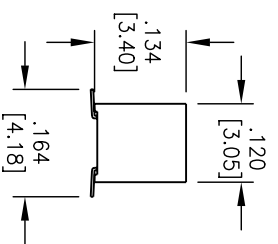
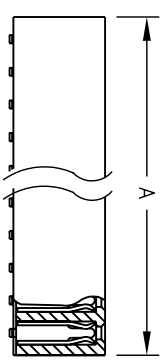


Rev	AWO #	Description	Date	Appr
-		RELEASED	1/10/05	

APPROVED: _____
 DATE: _____ TITLE: _____



RECOMMENDED PCB LAYOUT



SPECIFICATIONS:
 Material: _____
 Insulator: Nylon 46, rated UL 94V-0
 Insulator color: Black
 Contacts: Phosphor Bronze
 Plating: _____
 Gold Flash over Nickel underplate overall
 Electrical:
 Operating voltage: 250 VAC max
 Current rating: 1 Amp max.
 Contact resistance: 20 mohms max.
 Insulation resistance: 5000 Mohms min @ 500 VDC
 Dielectric withstanding voltage: 1000 VAC for 1 minute
 Temperature Rating:
 Operating temperature: -40°C to +105°C

A = .050 [1.27] X No. of Positions + .018 [0.46]
 B = .050 [1.27] X No. of Spaces

UNLESS OTHERWISE SPECIFIED
 ALL DIMENSIONS ARE INCHES [MM]
 TOLERANCES: EXCEPT AS NOTED
 INCHES: .X ±.10 ØXX ±.015
 .XXX ±.020 ØXXX ±.010
 .XXX ±.015

ADAM TECH
 909 Rahway Avenue, Union, NJ 07083
 Phone: 908-687-5000 Fax: 908-687-5710

RECEPTACLE, DUAL ROW, .050 X .050
 .134 [3.4] INSULATOR HEIGHT, SMT

APPROVALS
 DRAWN: SS 1/10/05
 CHECKED: _____
 APPROVED: _____

SIZE: X PART NO.: HRS-2E-XX-G-SMT
 SCALE: MTS SHEET 1 OF 1

6 5 4 3 2 1

A B C D