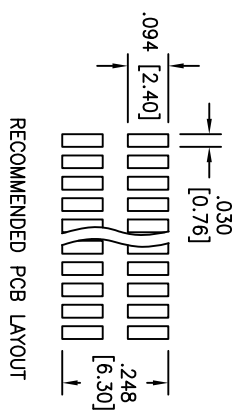
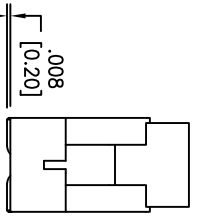
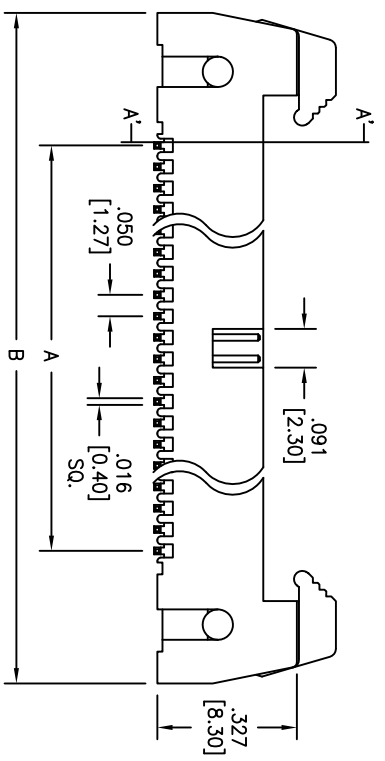
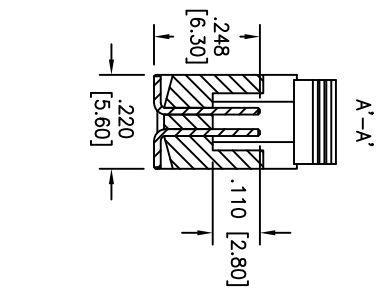
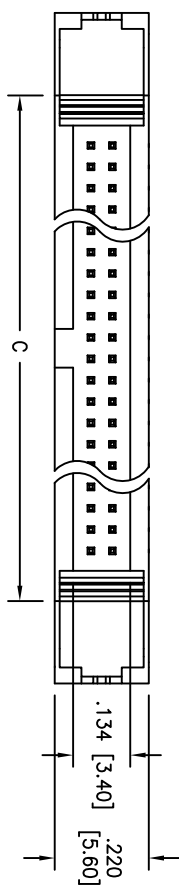


APPROVED: \_\_\_\_\_ TITLE: \_\_\_\_\_

DATE: \_\_\_\_\_

Rev	AWO #	Description	Date	Appr
-		RELEASED	10/15/09	



RECOMMENDED PCB LAYOUT

**SPECIFICATION:**  
**Material:**  
 Insulator: LCP, glass reinforced, rated UL-94V-0  
 Insulator Color: Black  
 Contacts: Brass  
**Contact Plating:**  
 Gold Flash over Nickel underplate overall.  
**Electrical:**  
 Operating Voltage: 350V AC max.  
 Current rating: 3 Amps max.  
 Contact resistance: 20 mohms max  
 Insulation resistance: 1000 Mohms min  
 Dielectric withstanding voltage: 1000 VAC / minute  
**Temperature Rating:**  
 Operating temperature: -40°C TO +105°C  
 Environmental:  
 Lead free, RoHS compliant.  
 Recommended soldering temp: 260°C for 5 sec.

Positions: 6, 10, 12, 14, 16, 20, 26, 30, 34, 40, 44, 50, 60, 64, 66, 68  
 A = .050 [1.27] X No. of Positions / 2 - .050 [1.27]  
 B = .050 [1.27] X No. of Positions / 2 + .571 [14.50]  
 C = .050 [1.27] X No. of Positions / 2 + .183 [4.65]

UNLESS OTHERWISE SPECIFIED  
 ALL DIMENSIONS ARE INCHES [MM]  
 TOLERANCES: EXCEPT AS NOTED

INCHES	HOLES
X ± .10	ØX ± .10
XX ± .020	ØXXX ± .015
XXX ± .015	ØXXX ± .010

**ADAM TECH**  
 909 Rahway Avenue, Union, NJ 07083  
 Phone: 908-687-5000 Fax: 908-687-5710

TITLE: .050 [1.27] SHROUDED HEADER W/ LATCHES, VERTICAL, SMT TYPE, 2 ROW, GOLD PLATED

DRAWN	DY	10/15/09
CHECKED		
APPROVED		

SIZE	PART NO.	REV.
X	HMHR-A-XX-VUA-SMT	-
REF:	S00041T	SCALE: NTS
		SHEET 1 OF 1