

Rev	AWO #	Description	Date	Appr
-		RELEASED	10/05/10	

6

5

4

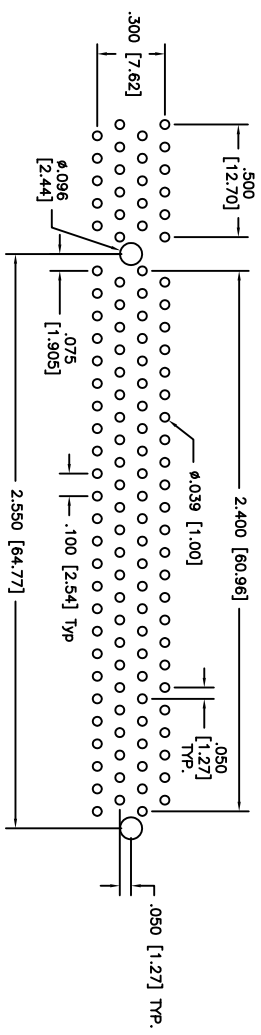
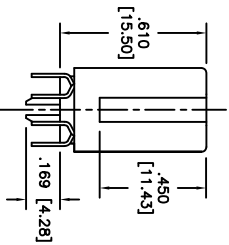
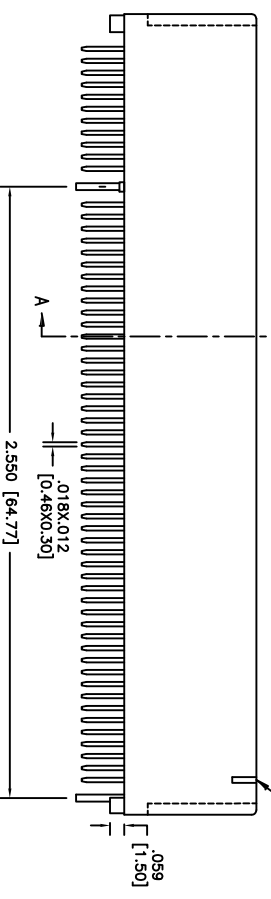
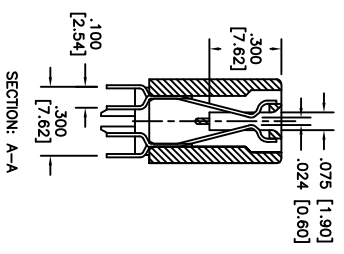
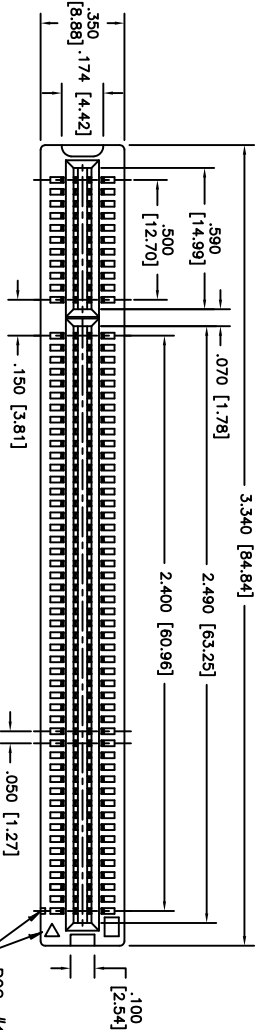
3

2

1

APPROVED: \_\_\_\_\_

DATE: \_\_\_\_\_ TITLE: \_\_\_\_\_



RECOMMENDED PCB LAYOUT (TOP VIEW)

## SPECIFICATIONS:

Material:

Insulator: Thermoplastic, rated UL 94V-0

Contacts: Copper Alloy

Plating:

Gold flash over Nickel underplate on contact area, Tin over Copper underplate on PCB tails

Electrical:

Operating voltage: 250 VAC max.

Current rating: 1 Amp max.

Contact resistance: 30 mohms max initial

Insulation resistance: 1,000 Mohms min

Dielectric withstanding voltage: 500 VAC for 1 minute

Temperature Rating:

Operating temperature: -55°C to +105°C

Environmental:

Lead free, RoHS compliant

Recommended soldering temp: 235°C for 5 seconds

**ADAM TECH**909 Rahway Avenue, Union, NJ 07083  
Phone: 908-687-5000 Fax: 908-687-5710PCI 120 CARD EDGE CONNECTOR  
MEATL BOARDLOCKS, SELECTIVE GOLD

UNLESS OTHERWISE SPECIFIED ALL DIMENSIONS ARE IN INCHES [MM]	
TOLERANCES: EXCEPT AS NOTED	
INCHES	
.X ± .10	ØX ± .10
.XX ± .020	ØXX ± .015
.XXX ± .015	ØXXX ± .010
APPROVALS	DATE
DRAWN	DY
CHECKED	
APPROVED	

SIZE	PART NO.	REV.
X	HMCA-B-120-G	-
REF: S001401	SCALE: NTS	SHEET 1 OF 2

6

5

4

3

2

1