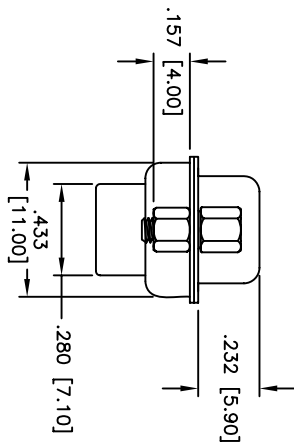
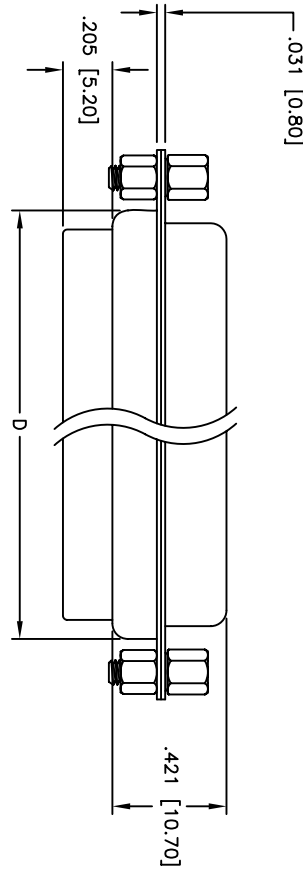
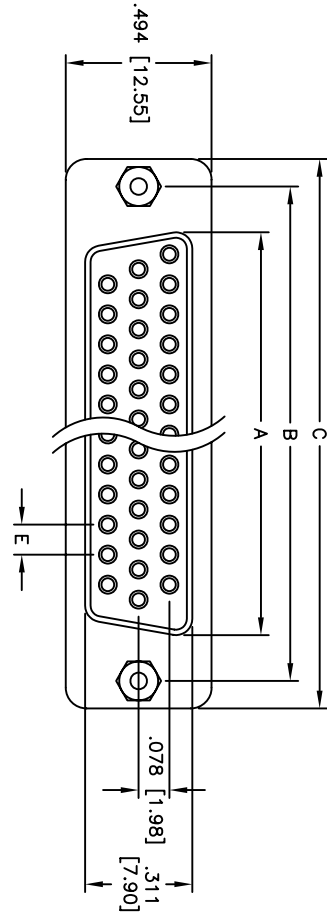


Rev	AWO #	Description	Date	Appr
-		RELEASED	5/11/05	

APPROVED: _____
 DATE: _____ TITLE: _____



Positions	SOCKET		DIMENSIONS			
	A	B	C	D		
15	.643 [16.33]	.984 [24.99]	1.213 [30.81]	.759 [19.28]		
26	.971 [24.66]	1.312 [33.32]	1.541 [39.14]	1.083 [27.51]		
44	1.511 [38.38]	1.852 [47.04]	2.088 [53.04]	1.626 [41.30]		
62	2.159 [54.84]	2.500 [63.50]	2.729 [69.32]	2.271 [57.70]		
78	2.064 [52.43]	2.406 [61.11]	2.635 [66.93]	2.099 [55.32]		

Unit: Inch / mm

SPECIFICATIONS:

Material: Insulator: PBT, glass reinforced, rated UL 94V-0
 Insulator color: Black
 Contacts: Phosphor Bronze
 Shell: Steel, Tin plated
 Hardware: Brass, Nickel plated
 Plating: Gold flash over Nickel underplate overall

Electrical:

Operating voltage: 250 VAC max
 Current rating: 5 Amps max
 Contact resistance: 20 mohms max
 Insulation resistance: 5,000 Mohms min
 Dielectric withstanding voltage: 1,000 VAC for 1 minute
 Temperature Rating: Operating temperature: -65°C to +125°C



Environmental: Lead free, RoHS compliant
 Recommended soldering temp: 235°C for 5 seconds

UNLESS OTHERWISE SPECIFIED
 ALL DIMENSIONS ARE INCHES [MM]
 TOLERANCES: EXCEPT AS NOTED
 INCHES Holes ±.10
 .X ±.10 ØX ±.10
 .XX ±.020 ØXX ±.015
 .XXX ±.015 ØXXX ±.010

ADAM TECH

909 Rahway Avenue, Union, NJ 07083
 Phone: 908-687-5000 Fax: 908-687-5710

TITLE: HIGH DENSITY D-SUB SOCKET
 CRIMP & POKE, RIVETED #4-40 CLINCH NUTS

DRAWN	SS	5/11/05	SIZE	PART NO.	REV.
CHECKED			X	HDTXX-SR-SL-US	-
APPROVED			REF:	SCALE: NTS	SHEET 1 OF 1