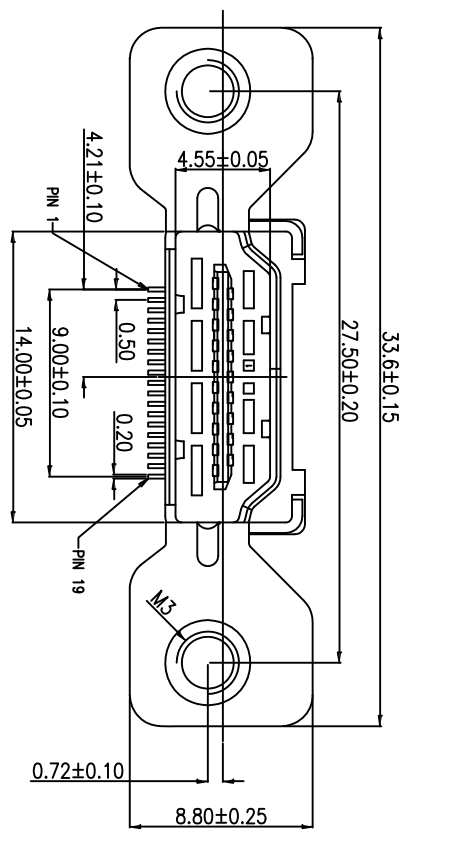
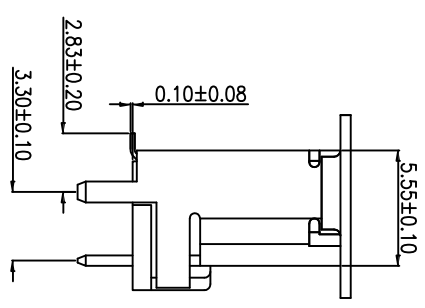
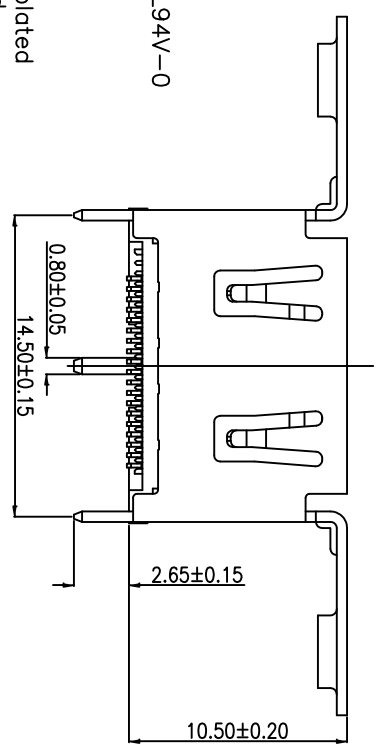
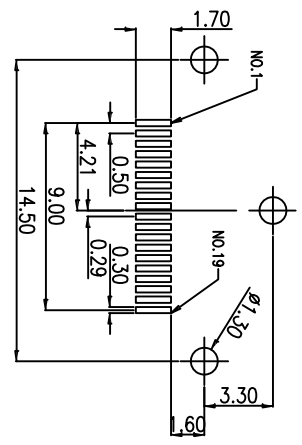


Rev	AWO #	Description	Date	Appr
-		RELEASED	7/14/10	

APPROVED: _____
 DATE: _____ TITLE: _____



RECOMMENDED PCB LAYOUT



SPECIFICATIONS:

- Material:** Housing: Glass filled heat-resisted resin, UL94V-0
- Termini:** Copper Alloy 0.2T
- Shield:** Copeer Alloy 0.5T
- Plating:**
- Termini:**
- Contact area:** 15 μ" Gold over 50 μ" Nickel plated
- Solder tail area:** Tin over 50 μ" Nickel plated
- Shell plating:** 100 μ" Nickel plated.
- Electrical:**
- Rating current:** 0.5A
- Rating voltage:** 40V
- Contact resistance:** 30 mohms max.
- Insulation resistance:**
- Unmated:** 100M ohms min.@500VDC
- Mated:** 10M ohms min.@150VDC
- Dielectric withstanding voltage:** 300V AC/1 minute
- Operating temperature:** -20°C to +85°C
- Environmental:**
- Lead free, RoHS Compliant**
- Recommended soldering temp:** 235°C for 5 seconds.

UNLESS OTHERWISE SPECIFIED
 ALL DIMENSIONS ARE MM
 TOLERANCES: EXCEPT AS NOTED

INCHES	HOLDS
.X ± .10	ØX ± .10
.XX ± .020	ØXX ± .015
.XXX ± .015	ØXXX ± .010

APPROVALS

APPROVALS	DATE
DRAWN	7/14/10
CHECKED	
APPROVED	

ADAM TECH

909 Rahway Avenue, Union, NJ 07083
 Phone: 908-687-5000 Fax: 908-687-5710

TITLE: HDMI CONNECTOR, SOLDER TAIL: SMT TYPE
 SHELL: DIP TYPE

SIZE	PART NO.	REV.
X	HDMI-S-V-SMT-MF-WOB-15	-

REF: S00009T SCALE: NTS SHEET 1 OF 1