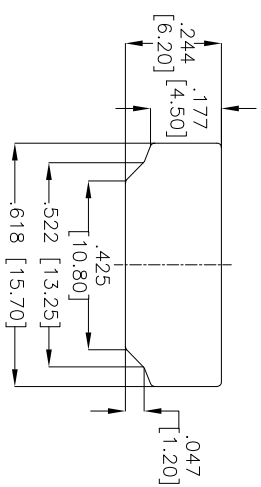
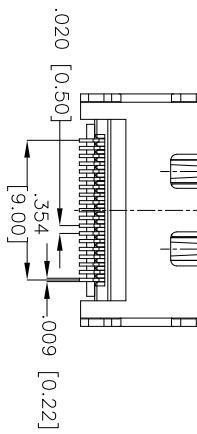
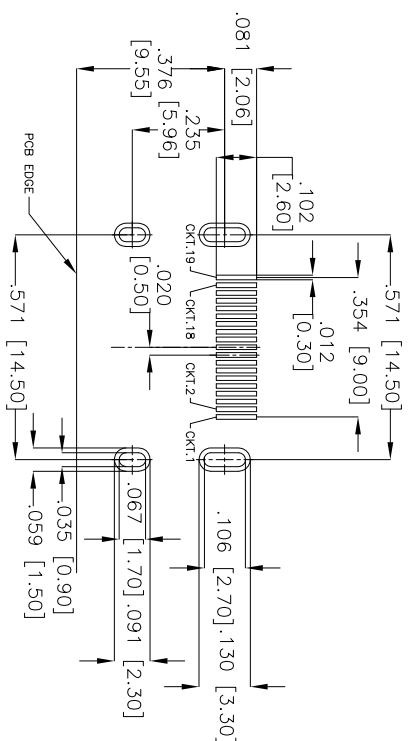
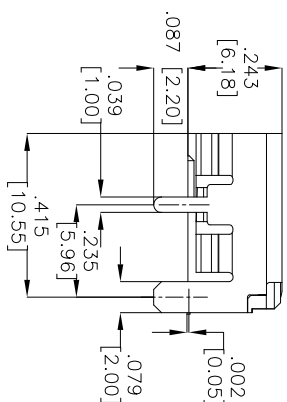
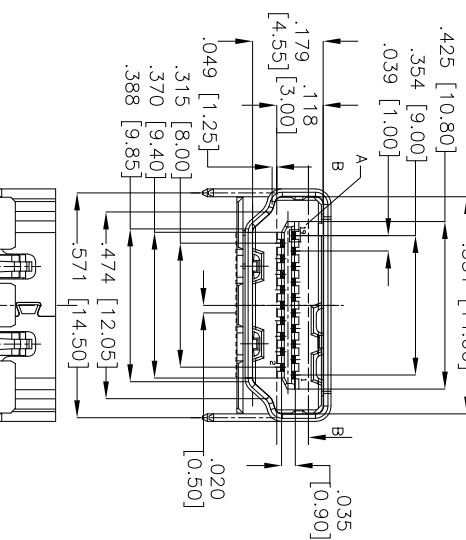
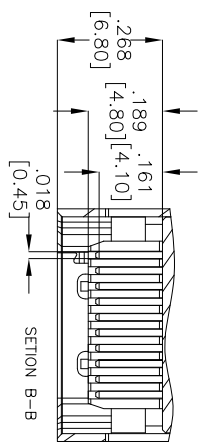
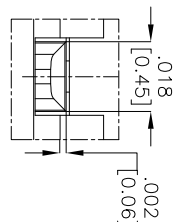
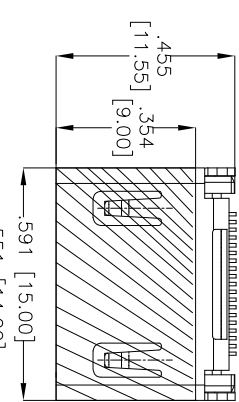


Rev	AWO #	Description	Date	Appr
-		RELEASED	10/01/09	

APPROVED: _____

DATE: _____ TITLE: _____



RECOMMENDED PCB LAYOUT

SPECIFICATIONS:

Material: Housing: Hi-temp thermoplastic, UL 94V-0

Housing color: Black

Contact: Copper Alloy

Shield: Copper Alloy

Plating:

Gold flash over Nickel underplate on contact area,
Tin over Copper underplate on tails.

Electrical:

Voltage rating: 40V

Current rating: 0.5A

Dielectric strength: 300VAC for 1 minute min.

Contact resistance: 100 Megohm min.

Insulation resistance: 10 mohms max.

Environmental:

Lead free, RoHS Compliant

Recommended soldering temp: 260°C for 5 seconds.

ADAM TECH

909 Rahway Avenue, Union, NJ 07083
Phone: 908-687-5000 Fax: 908-687-5710

TITLE: HDMI CONNECTOR, RIGHT ANGLE
SMT TYPE, HEADER ASSEMBLY

UNLESS OTHERWISE SPECIFIED ALL DIMENSIONS ARE IN INCHES [MM]	
TOLERANCES: EXCEPT AS NOTED	
INCHES	HOLDS
.X ± .10	ØX ± .10
.XX ± .020	ØXX ± .015
.XXX ± .015	ØXXX ± .010
APPROVALS	DATE
DRAWN DY	10/01/09
CHECKED	
APPROVED	

SIZE	PART NO.	TITLE
X	HDMI-S-RA-SMT-A	HDMI CONNECTOR, RIGHT ANGLE SMT TYPE, HEADER ASSEMBLY
REF:	SCALE: NTS	SHEET 1 OF 1

