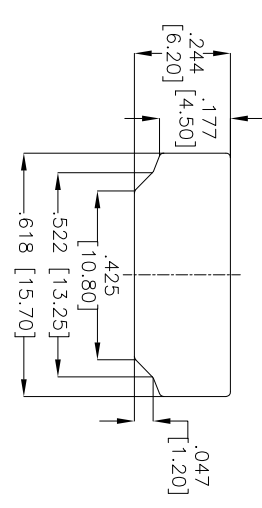
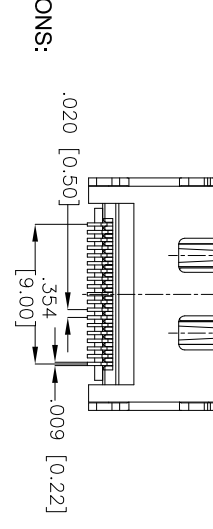
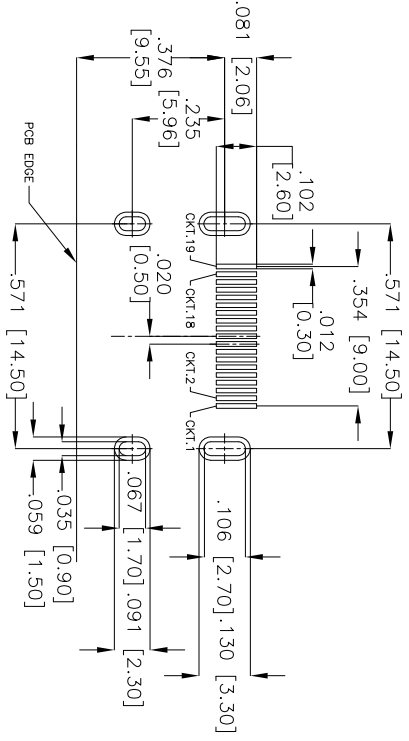
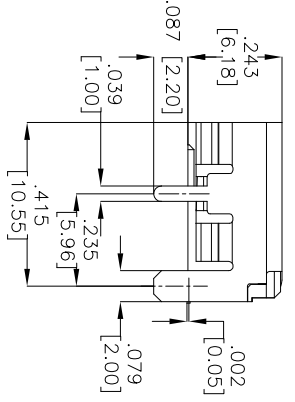
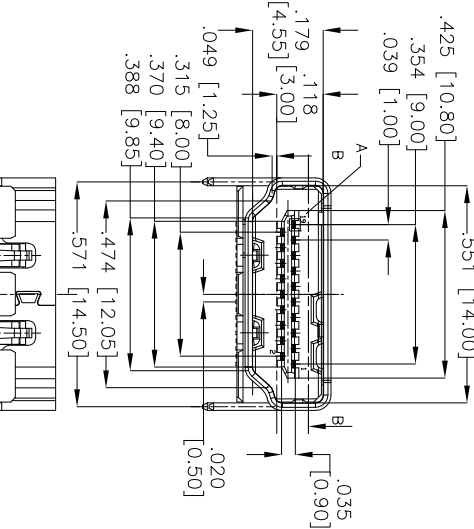
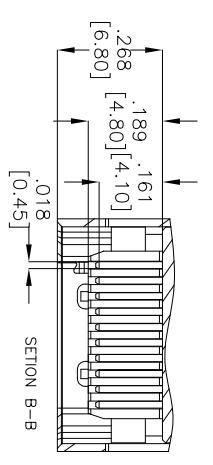
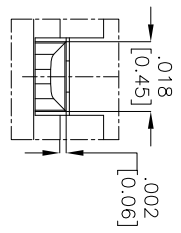
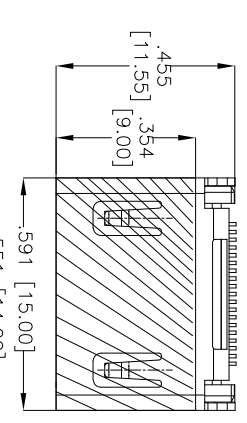


6	5	4	3	2	1
APPROVED: _____	TITLE: _____	DATE: _____			
Rev	AWO #	Description	Date	Appr	
-		RELEASED	6/09/10		



PACKAGED ON TAPE & REEL

SPECIFICATIONS:
Material: Housing: Hi-temp thermoplastic, UL 94V-0
Housing color: Black
Contact: Copper Alloy
Shield: Copper Alloy, Matt Tin plated
Plating: 15u" Gold over Nickel underplate on contact area, Tin over Copper underplate on tails.
Electrical:
Voltage rating: 40V
Current rating: 0.5A
Dielectric strength: 300VAC for 1 minute min.
Insulation resistance: 100 Megohm min.
Contact resistance: 10 mohms max.
Environmental:
Lead free, RoHS Compliant
Recommended soldering temp: 260°C for 5 seconds.



UNLESS OTHERWISE SPECIFIED ALL DIMENSIONS ARE IN INCHES [MM]	
TOLERANCES: EXCEPT AS NOTED	
INCHES	HOLDS
.X ± .10	ØX ± .10
.XX ± .020	ØXX ± .015
.XXX ± .015	ØXXX ± .010
APPROVALS	DATE
DRAWN	6/09/10
CHECKED	
APPROVED	

ADAM TECH
909 Railway Avenue, Union, NJ 07083
Phone: 908-687-5000 Fax: 908-687-5710

TITLE: **HDMI CONNECTOR, RIGHT ANGLE SMT TYPE, HEADER ASSEMBLY**

SIZE: X
PART NO.: **HDMI-S-RA-SMT-A-15-T/R**

REF: S00003C SCALE: NTS SHEET 1 OF 1