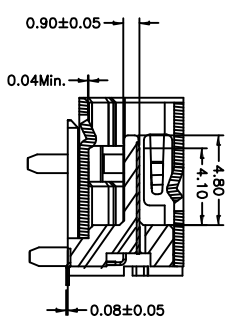
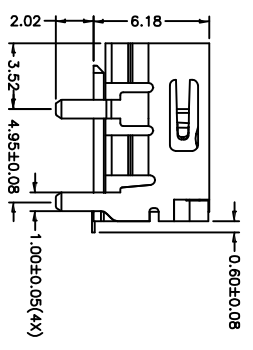
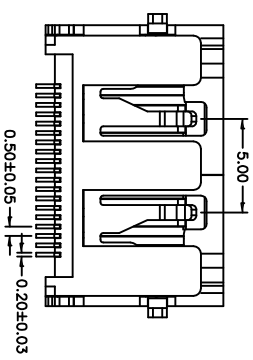
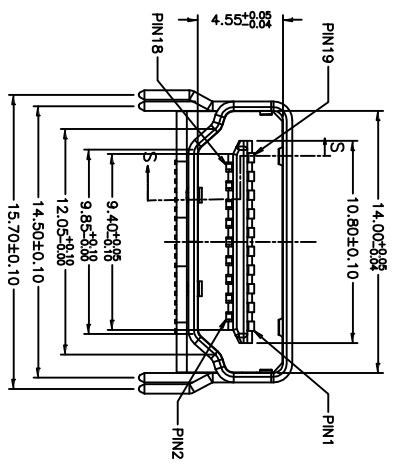
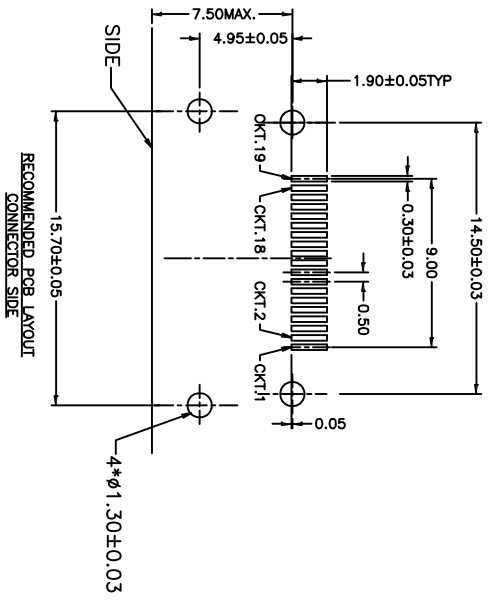
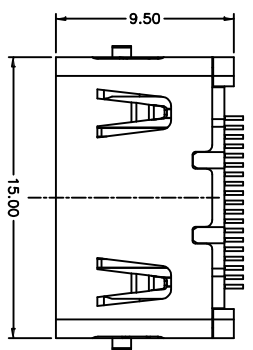


| Rev | AWO # | Description | Date | Appr |
|-----|-------|-------------|---------|------|
| - | | RELEASED | 7/02/10 | |

APPROVED: _____
 DATE: _____ TITLE: _____



SECTION S-S
SCALE 1:1

PACKAGED ON TAPE & REEL

SPECIFICATIONS:

- Material: Housing: Hi-temp thermoplastic, UL 94V-0
- Housing color: Black
- Contact: Phosphor Bronze
- Shield: Brass, Nickel plated
- Plating: Gold flash over Nickel underplate on contact area, Tin over Copper underplate on tails.

Electrical:

- Voltage rating: 40V
- Current rating: 0.5A
- Dielectric strength: 300VAC for 1 minute min.
- Insulation resistance: 100 Megohm min.
- Contact resistance: 10 mohms max.

Environmental:

- Lead free, RoHS Compliant
- Recommended soldering temp: 260°C for 5 seconds.



ADAM TECH

909 Rahway Avenue, Union, NJ 07083
 Phone: 908-687-5000 Fax: 908-687-5710

HDMI CONNECTOR, RIGHT ANGLE, SMT

| | |
|---|-------------|
| UNLESS OTHERWISE SPECIFIED ALL DIMENSIONS ARE MM | |
| TOLERANCES: EXCEPT AS NOTED | |
| INCHES | HOLES |
| .X ± .10 | ØX ± .10 |
| .XX ± .020 | ØXXX ± .015 |
| .XXX ± .015 | ØXXX ± .010 |
| APPROVALS | DATE |
| DRAWN | 7/02/10 |
| CHECKED | |
| APPROVED | |

| | | |
|--------|----------------------|------|
| SIZE | PART NO. | REV. |
| X | HDMI-S-RA-SMT-05-T/R | - |
| REF: | S00005C | |
| SCALE: | NIS | |
| SHEET | 1 OF 1 | |