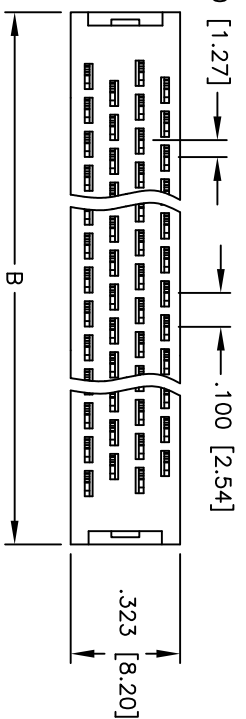


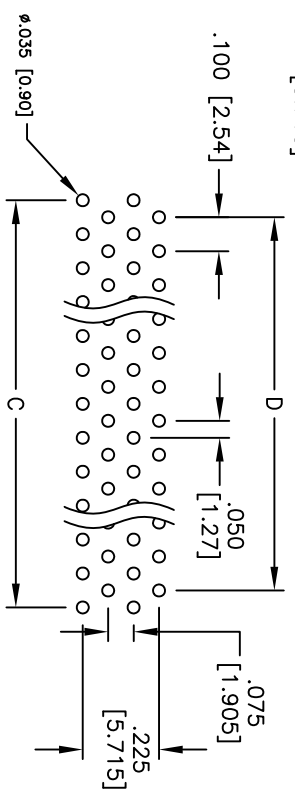
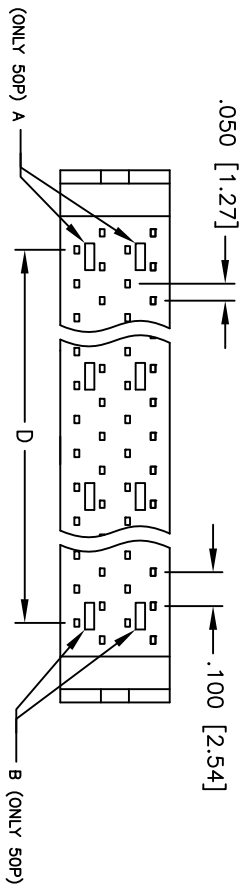
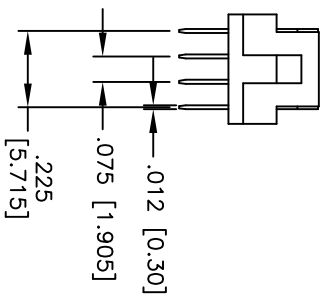
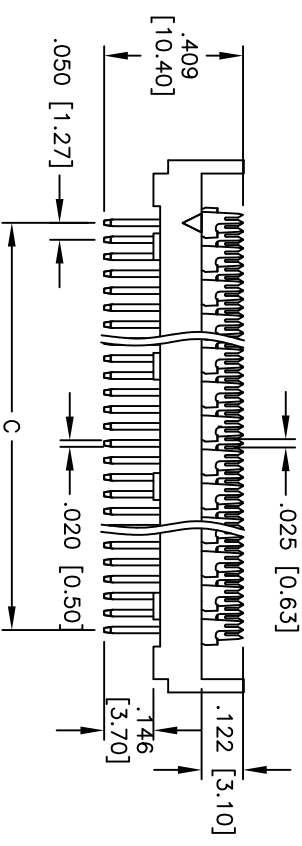
APPROVED: _____

DATE: _____ TITLE: _____

Rev	AWO #	Description	Date	Appr
-		RELEASED	1/15/10	



POSITION	A	B	C	D
26	.890 [22.61]	.969 [24.61]	.600 [15.24]	.500 [12.70]
30	.990 [25.15]	1.069 [27.15]	.700 [17.78]	.600 [15.24]
34	1.090 [27.69]	1.169 [29.69]	.800 [20.32]	.700 [17.78]
40	1.237 [31.42]	1.319 [33.50]	1.319 [33.50]	.950 [24.13]
50	1.490 [37.85]	1.569 [39.85]	1.200 [30.48]	1.100 [27.94]
60	1.740 [44.20]	1.820 [46.20]	1.820 [46.20]	1.450 [36.83]
68	1.937 [49.20]	2.024 [51.40]	2.015 [51.18]	1.650 [41.91]
80	2.237 [56.82]	2.323 [59.00]	2.319 [58.90]	1.950 [49.53]
100	2.740 [69.60]	2.820 [71.60]	2.820 [71.60]	2.450 [62.23]



RECOMMENDED PCB LAYOUT
TOP VIEW

SPECIFICATIONS:

Material: Insulator: PBT, glass reinforced, rated UL 94V-0

Insulator color: Black

Contacts: Phosphor Bronze

Plating:

Tin over Copper underplate overall.

Electrical: Operating voltage: 250 VAC max.

Current rating: 0.5 Amp max.

Contact resistance: 30 mohms max. initial

Insulation resistance: 1,000 Mohms min.

Dielectric withstanding voltage: 300 VAC for 1 minute

Temperature Rating:

Operating temperature: -40°C to +85°C

Environmental:

Lead free, RoHS compliant

Recommended Soldering tem. 235°C for 5 sec.



ADAM TECH

909 Railway Avenue, Union, NJ 07083
Phone: 908-687-5000 Fax: 908-687-5710

TITLE: TRANSITION PLUG, .050[1.27]
FOR SINGLE LAYER .025[.635] FLAT CABLE

UNLESS OTHERWISE SPECIFIED ALL DIMENSIONS ARE IN INCHES [MM]	
TOLERANCES: EXCEPT AS NOTED	
INCHES	HOLDS
.X ± .10	± .10
.XX ± .020	± .015
.XXX ± .015	± .010
APPROVALS	DATE
DRAWN	DY
CHECKED	1/15/10
APPROVED	

SIZE	PART NO.	REV.
X	FDH-XX-T	
REF:	SCALE: NTS	SHEET 1 OF 2