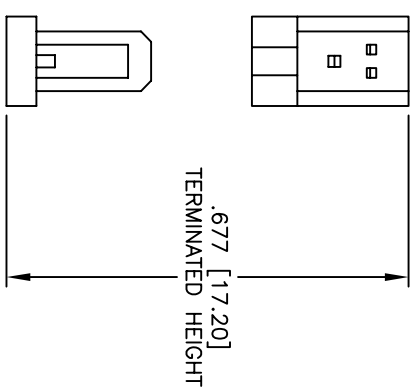
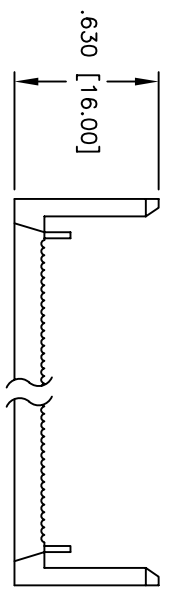
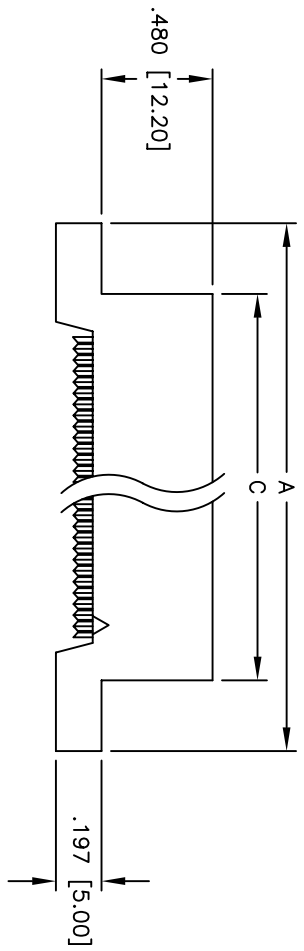
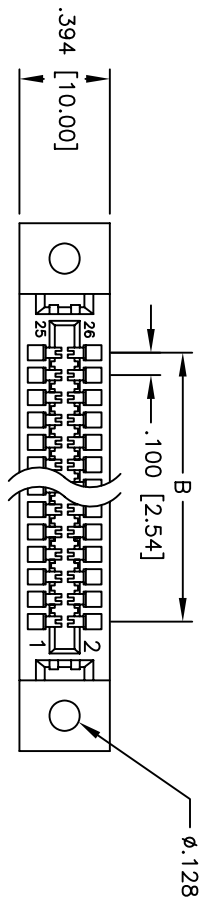


Rev	AWO #	Description	Date	Appr
-		RELEASED	11/17/06	

APPROVED: \_\_\_\_\_

DATE: \_\_\_\_\_ TITLE: \_\_\_\_\_



Positions: 10, 14, 16, 20, 26, 34, 40, 50, 60, 62, & 64  
 A = .100 [2.54] x No. of Positions per Row + 1.200 [30.48]  
 B = .100 [2.54] x No. of Spaces  
 C = .100 [2.54] x No. of Positions per Row + .380 [9.66]

**SPECIFICATIONS:**  
 Material:  
 Insulator: PBT, glass reinforced, rated UL 94V-0  
 Insulator color: Black  
 Contacts: Phosphor Bronze  
 Plating:  
 Gold flash over Nickel underplate on mating area, Tin over Copper underplate on IDC area  
 Electrical:  
 Operating voltage: 250 VAC max.  
 Current rating: 1 Amp max.  
 Contact resistance: 30 mohms max. initial  
 Insulation resistance: 3,000 Mohms min.  
 Dielectric withstanding voltage: 500 VAC for 1 minute  
 Mechanical:  
 Recommended wire size: 28 AWG stranded  
 Temperature Rating:  
 Operating temperature: -40°C to +105°C  
 Environmental:  
 Lead free, RoHS compliant

UNLESS OTHERWISE SPECIFIED	
ALL DIMENSIONS ARE INCHES [MM]	
TOLERANCES: EXCEPT AS NOTED	
INCHES	HOLES
.X ± .10	ØX ± .10
.XX ± .020	ØXXX ± .015
.XXX ± .015	ØXXX ± .010
APPROVALS	DATE
DRAWN	BW
CHECKED	
APPROVED	

**ADAM TECH**  
 909 Railway Avenue, Union, NJ 07083  
 Phone: 908-687-5000 Fax: 908-687-5710

TITLE: .100 [2.54] IDC CARD EDGE SOCKET  
 MOUNTING EARS W/SLOTTED HOLES  
 SIZE: X  
 PART NO.: FCE-XX-SG-MH  
 SCALE: NTS  
 SHEET 1 OF 1