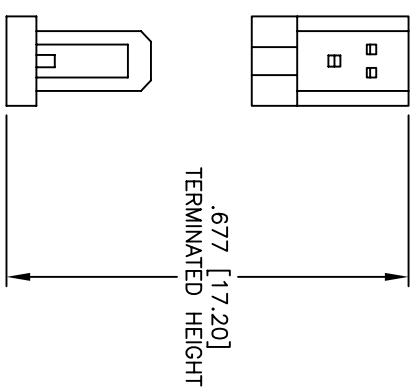
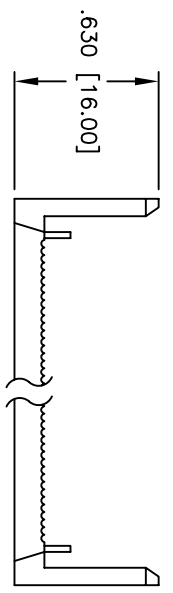
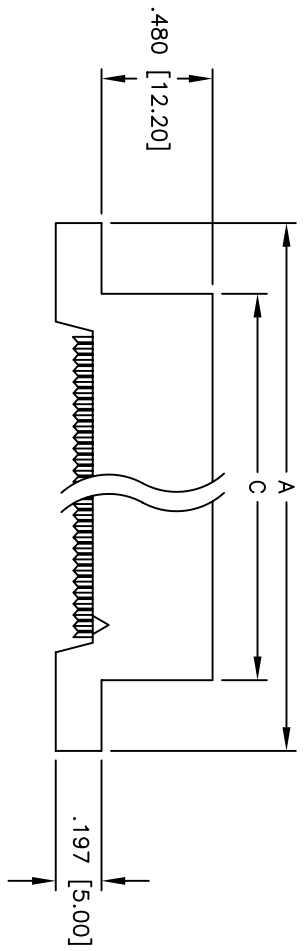
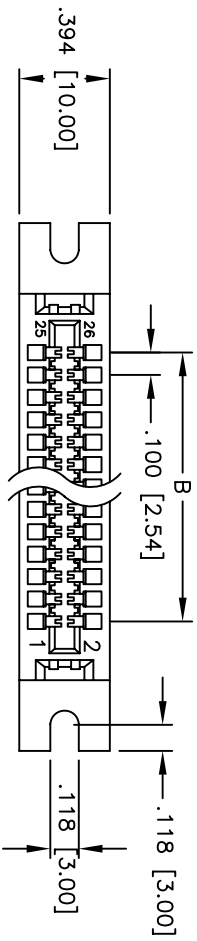


Rev	AWO #	Description	Date	Appr
-		RELEASED	8/28/06	

APPROVED: _____

DATE: _____ TITLE: _____



SPECIFICATIONS:

Material:

Insulator: PBT, glass reinforced, rated UL 94V-0

Insulator color: Black

Contacts: Phosphor Bronze

Plating:

Gold flash over Nickel underplate on mating area, Tin over Copper underplate on IDC area

Electrical:

Operating voltage: 250 VAC max.

Contact rating: 1 Amp max.

Contact resistance: 30 mohms max. initial

Insulation resistance: 3,000 Mohms min.

Dielectric withstanding voltage: 500 VAC for 1 minute

Mechanical:

Recommended wire size: 28 AWG stranded

Temperature Rating:

Operating temperature: -40°C to +105°C

Environmental:

Lead free, RoHS compliant

Positions: 10, 14, 16, 20, 26, 34, 40, 50, 60, 62, & 64
 A = .100 [2.54] x No. of Positions per Row + .998 [25.36]
 B = .100 [2.54] x No. of Spaces
 C = .100 [2.54] x No. of Positions per Row + .380 [9.66]

UNLESS OTHERWISE SPECIFIED
 ALL DIMENSIONS ARE INCHES [MM]
 TOLERANCES: EXCEPT AS NOTED
 INCHES HOLE SIZES
 .X ± .10 ØX ± .10
 .XX ± .020 ØXX ± .015
 .XXX ± .015 ØXXX ± .010

APPROVALS	DATE

DRAWN	SS	8/28/06
CHECKED		
APPROVED		

ADAM TECH

909 Railway Avenue, Union, NJ 07083
 Phone: 908-687-5000 Fax: 908-687-5710

TITLE: .100 [2.54] IDC CARD EDGE SOCKET
 MOUNTING EARS W/ SLOTTED HOLES

SIZE	PART NO.	REV.
X	FCE-XX-SG-E	-

SCALE: NTS SHEET 1 OF 1