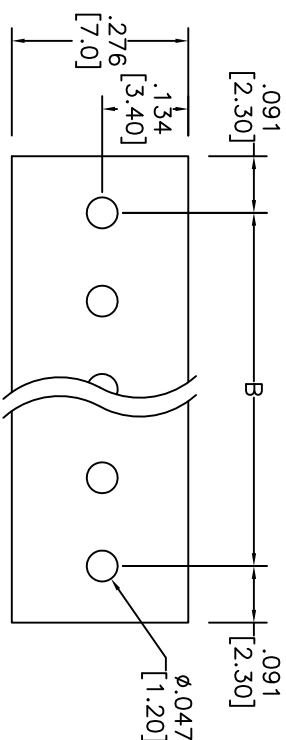
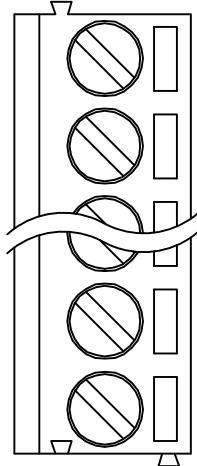
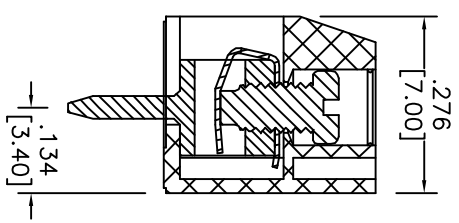
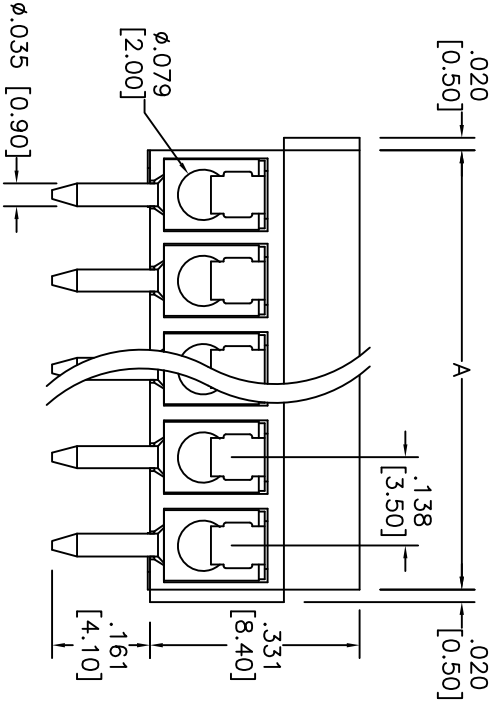


Rev	AWO #	Description	Date	Appr
-		RELEASED	8/05/10	

APPROVED: _____
 DATE: _____ TITLE: _____



RECOMMENDED PCB LAYOUT



SPECIFICATIONS:

- Material: Insulator: Polyamide, glass filled, rated UL 94V-0
- Insulator color: Green
- Contact: Brass, Tin plated.
- Terminal Screw: Steel
- Wire guard: Stainless Steel
- Electrical:
 - Operation voltage: 125 VAC max
 - Current rating: 10 Amps max per Pole
 - Contact resistance: 20 mohms max
 - Insulation resistance: 5000 Mohms min@ 1000V
 - Dielectric withstanding voltage: 1500 VAC for 1 minute
- Mechanical:
 - Screw Torque: 1.5 Kgf-cm (max.)
 - Wire Range: 16-26Awg.
- Environmental:
 - Operating temperature: -33°C to +120°C
 - Lead free, RoHS compliant.
 - Recommended soldering temp: 235°C for 5 sec.

A = .138 [3.50] x No. of Positions
 B = .138 [3.50] x No. of Spaces

UNLESS OTHERWISE SPECIFIED	
ALL DIMENSIONS ARE MM [INCHES]	
TOLERANCES: EXCEPT AS NOTED	
INCHES	HOLDS
.X ± .10	ØX ± .10
.XX ± .020	ØXXX ± .015
.XXX ± .015	ØXXX ± .010
APPROVALS	DATE
DRAWN	DY
CHECKED	
APPROVED	

ADAM TECH

909 Rahway Avenue, Union, NJ 07083
 Phone: 908-687-5000 Fax: 908-687-5710

EURO TERMINAL BLOCK, VERTICAL

.138 [3.50] PITCH, PCB TYPE, COLOR GREEN

TITLE	SIZE	PART NO.	REV.
EURO TERMINAL BLOCK, VERTICAL	X	EBC-XXA-GRN	-
REF: S00007T	SCALE: NTS	SHEET 1 OF 1	

