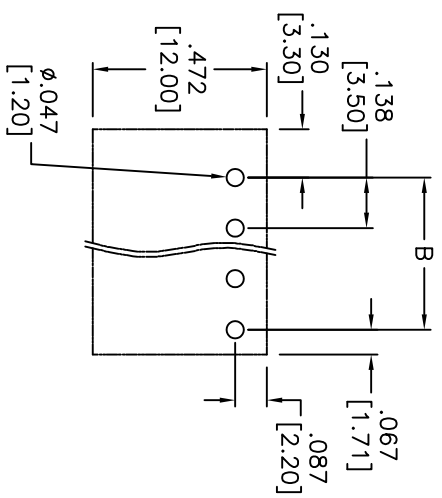
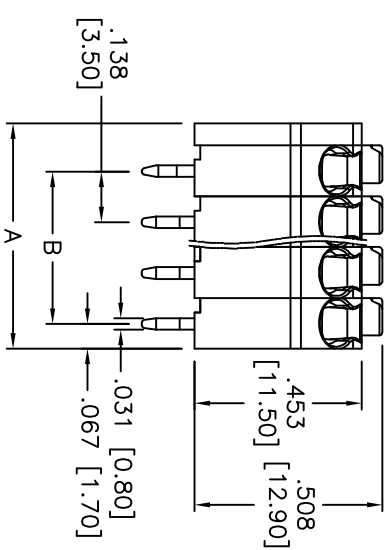
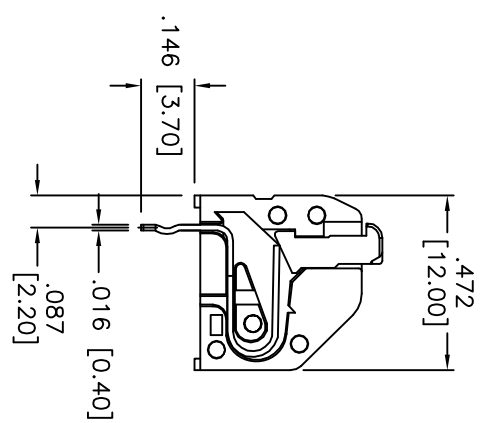
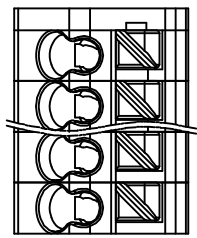
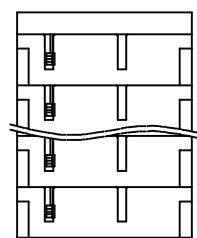


Rev	AWO #	Description	Date	Appr
-		RELEASED	12/03/09	

APPROVED: \_\_\_\_\_  
 DATE: \_\_\_\_\_ TITLE: \_\_\_\_\_



RECOMMENDED PCB LAYOUT



Positions: 02 thru 24  
 A = .138 [3.50] x No. of Positions + .059 [1.50]  
 B = .138 [3.50] x No. of Spaces

**SPECIFICATIONS:**  
 Material: Thermoplastic, rated UL 94V-0  
 Insulator color: Grey  
 Contact: Phosphor Bronze, Tin plated  
 Electrical:  
 Operation voltage: 300 VAC  
 Current rating: 6 Amps  
 Solid wire(AWG): 16-20  
 Stranded wire(AWG): 16-20  
 Dielectric withstanding voltage: 1600 VAC for 1 minute  
 Environmental:  
 Operating temperature: -40°C to +115°C  
 Lead free, RoHS compliant.  
 Recommended soldering temp: 235°C for 5 sec.



UNLESS OTHERWISE SPECIFIED	
ALL DIMENSIONS ARE MM [INCHES]	
TOLERANCES: EXCEPT AS NOTED	
INCHES	HOLE
.X ± .10	ØXX ± .10
.XX ± .020	ØXXX ± .015
.XXX ± .015	ØXXXX ± .010
APPROVALS	
DRAWN	DATE
CHECKED	
APPROVED	

**ADAM TECH**  
 909 Rahway Avenue, Union, NJ 07083  
 Phone: 908-687-5000 Fax: 908-687-5710

TITLE: **.138" [3.50] PITCH, TERMINAL BLOCK**

SIZE	PART NO.	REV.
X	EB59-1-XX-A	-
REF: S00007T	SCALE: NTS	SHEET 1 OF 1

6 5 4 3 2 1