

6

5

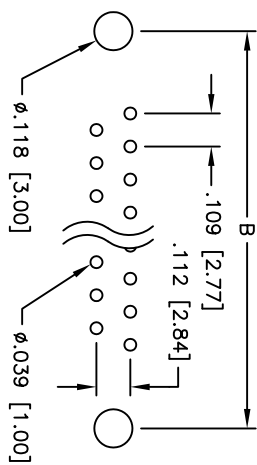
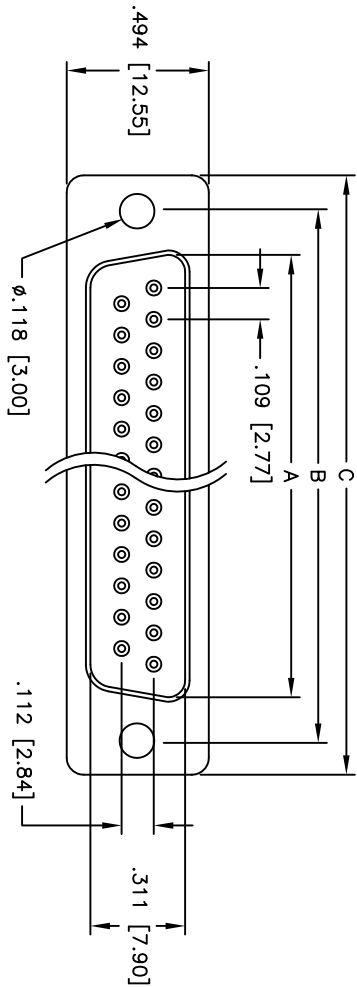
4

3

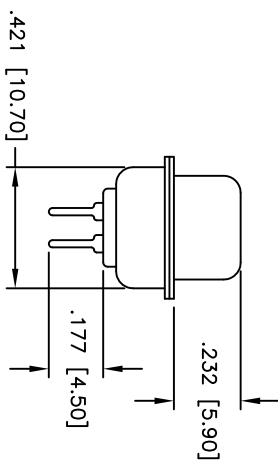
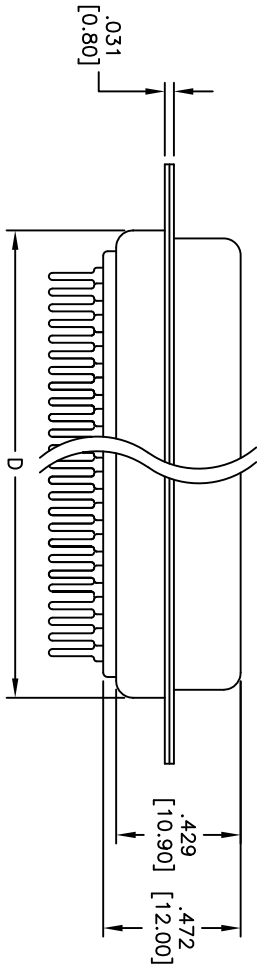
2

1

APPROVED: _____
 DATE: _____ TITLE: _____



PCB LAYOUT



Unit: Inch / mm

SPECIFICATIONS:

- Material: Insulator: PBT, glass reinforced, rated UL 94V-0
- Insulator color: Black
- Contacts: Phosphor Bronze
- Shell: Steel, Tin plated
- Hardware: Brass, Nickel plated
- Plating: Gold flash over Nickel underplate overall
- Electrical: Operating voltage: 250 VAC max
- Current rating: 5 Amps max
- Contact resistance: 20 mohms max
- Insulation resistance: 5,000 Mohms min
- Dielectric withstanding voltage: 1,000 VAC for 1 minute
- Temperature Rating: Operating temperature: -65°C to +125°C
- Environmental: Lead free, RoHS compliant
- Recommended soldering temp: 235°C for 5 seconds

| Positions | DIMENSIONS | | | |
|-----------|---------------|---------------|---------------|---------------|
| | A | B | C | D |
| 9 | .643 [16.33] | .984 [24.99] | 1.213 [30.81] | .756 [19.20] |
| 15 | .971 [24.66] | 1.312 [33.32] | 1.541 [39.14] | 1.091 [27.70] |
| 25 | 1.511 [38.38] | 1.852 [47.04] | 2.088 [53.04] | 1.618 [41.10] |
| 37 | 2.159 [54.84] | 2.500 [63.50] | 2.729 [69.32] | 2.256 [57.30] |
| 50 | 2.064 [52.43] | 2.406 [61.11] | 2.637 [67.00] | 2.169 [55.10] |

UNLESS OTHERWISE SPECIFIED
 ALL DIMENSIONS ARE INCHES [MM]
 TOLERANCES: EXCEPT AS NOTED
 INCHES Holes
 .X ± .10 ØXX ± .10
 .XX ± .020 ØXXX ± .015
 .XXX ± .015 ØXXXX ± .010
 APPROVALS DATE

ADAM TECH

909 Railway Avenue, Union, NJ 07083
 Phone: 908-687-5000 Fax: 908-687-5710

TITLE: D-SUB SOCKET, STANDARD PROFILE
 .118 [3.00] THRU-HOLE

| | | | | | |
|----------|----|---------|------|------------|--------------|
| DRAWN | SS | 8/11/06 | SIZE | PART NO. | REV. |
| CHECKED | | | X | DXXX-ST-1 | A |
| APPROVED | | | REF: | SCALE: NTS | SHEET 1 OF 1 |

A

B

C

D

A

B

C

D

6

5

4

3

2

1

