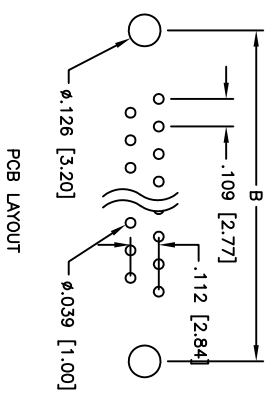
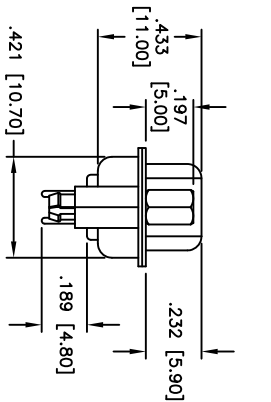
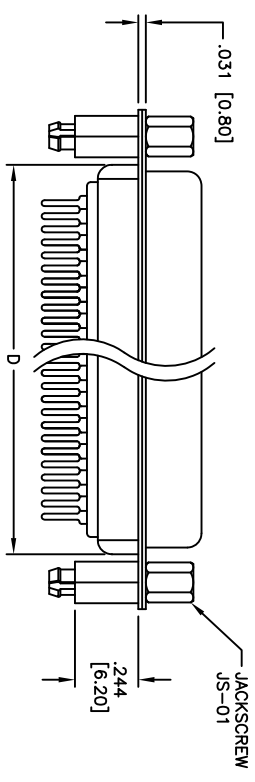
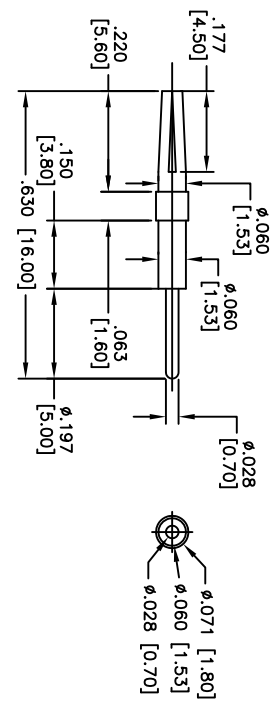
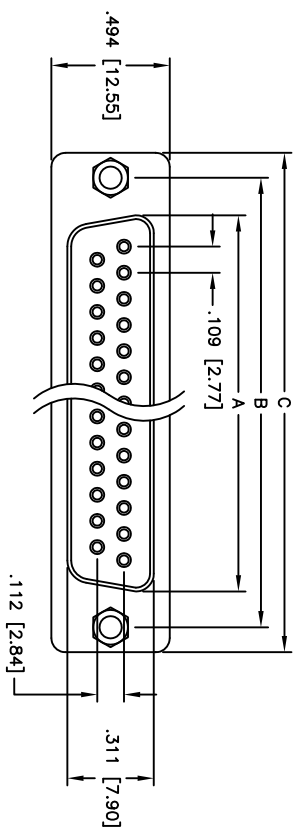
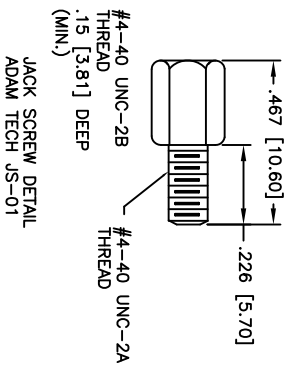


Rev	AWO #	Description	Date	Appr
-		RELEASED	3/31/06	

APPROVED: \_\_\_\_\_  
 DATE: \_\_\_\_\_ TITLE: \_\_\_\_\_



**SPECIFICATIONS:**  
 Material: Insulator: PBT, glass reinforced, rated UL 94V-0  
 Insulator color: Black  
 Contacts: Phosphor Bronze  
 Shell: Steel, Tin plated  
 Hardware: Brass, Nickel plated  
 Plating: Gold flash over Nickel underplate overall



Positions	DIMENSIONS			
	A	B	C	D
9	.643 [16.33]	.984 [24.99]	1.213 [30.81]	.756 [19.20]
15	.971 [24.66]	1.312 [33.32]	1.541 [39.14]	1.091 [27.70]
25	1.511 [38.38]	1.852 [47.04]	2.088 [53.04]	1.618 [41.10]
37	2.159 [54.84]	2.500 [63.50]	2.729 [69.32]	2.256 [57.30]
50	2.064 [52.43]	2.406 [61.11]	2.637 [67.00]	2.169 [55.10]

Unit: Inch / mm

**Electrical:**  
 Operating voltage: 250 VAC max  
 Current rating: 5 Amps max  
 Contact resistance: 20 mohms max  
 Insulation resistance: 5,000 Mohms min  
 Dielectric withstanding voltage: 1,000 VAC for 1 minute  
 Temperature Rating: Operating temperature: -65°C to +125°C



Lead free, RoHS compliant  
 Recommended soldering temp: 235°C for 5 seconds

**ADAM TECH**

909 Rahway Avenue, Union, NJ 07083  
 Phone: 908-687-5000 Fax: 908-687-5710

UNLESS OTHERWISE SPECIFIED ALL DIMENSIONS ARE INCHES [MM] TOLERANCES: EXCEPT AS NOTED		INCHES		HOLDS	
.X	± .10	ØX	± .10		
.XX	± .020	ØXX	± .015		
.XXX	± .015	ØXXX	± .010		
APPROVALS		DATE			
DRAWN	SS	3/31/06			
CHECKED					
APPROVED					
TITLE		SIZE	PART NO.	REV.	
D-SUB SOCKET, RIVETED #4-40 JACKSCREWS & STANDOFFS W/BOARDLOCKS		X	DXXX-ST-1BL-JS-MC		
ADAM TECH		SCALE:	NTS	SHEET	1 OF 1