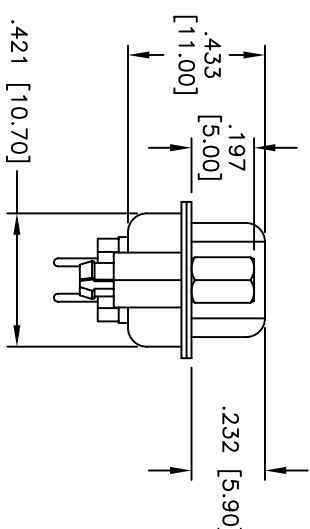
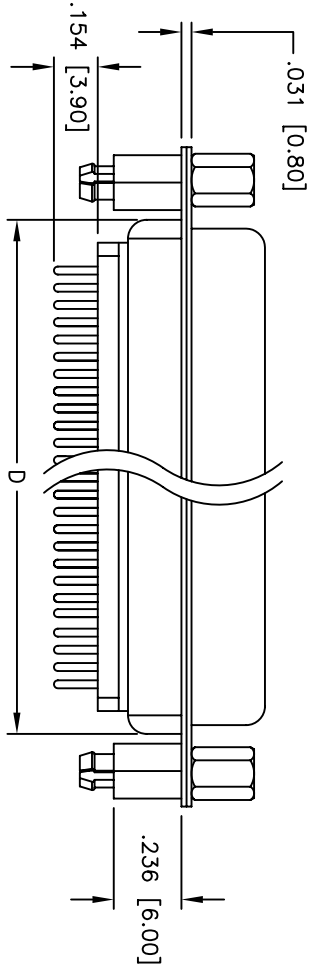
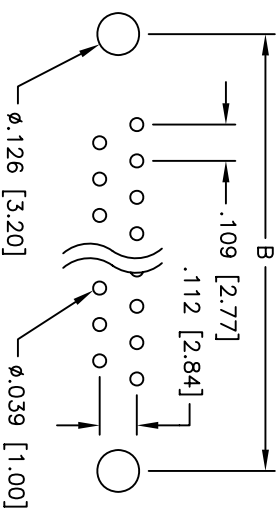
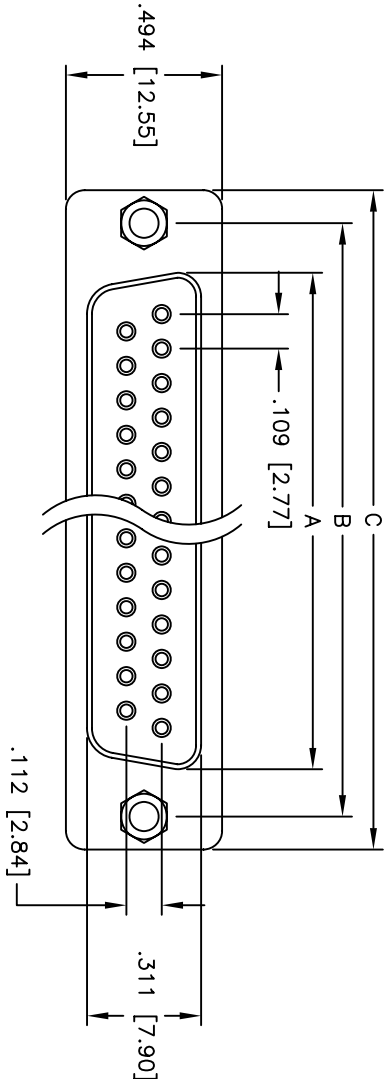


| Rev | AWO # | Description | Date | Appr |
|-----|-------|-------------|---------|------|
| - | | RELEASED | 4/15/05 | |

APPROVED: _____
 DATE: _____ TITLE: _____



| DXXX | NO. OF CONTACTS | DIMENSIONS | | | |
|------|-----------------|---------------|---------------|---------------|---------------|
| | | A | B | C | D |
| DE09 | 9 | .643 [16.33] | .984 [24.99] | 1.213 [30.81] | .756 [19.20] |
| DA15 | 15 | .971 [24.66] | 1.312 [33.32] | 1.541 [39.14] | 1.091 [27.70] |
| DB25 | 25 | 1.511 [38.38] | 1.852 [47.04] | 2.088 [53.04] | 1.618 [41.10] |
| DC37 | 37 | 2.159 [54.84] | 2.500 [63.50] | 2.729 [69.32] | 2.256 [57.30] |

ADAM TECH

909 Rahway Avenue, Union, NJ 07083
 Phone: 908-687-5000 Fax: 908-687-5710

TITLE: D-SUB SOCKET, EMI FILT., RIVETED #4-40 JACKSCREWS & STANDOFFS W/BOARDLOCKS

SPECIFICATIONS:
 Material: Insulator: PBT, glass reinforced, rated UL 94V-0
 Insulator color: Black
 Contacts: Phosphor Bronze
 Shell: Steel, Tin plated
 Hardware: Brass, Nickel plated
 Plating: Gold flash over Nickel underplate overall
 Electrical: Operating voltage: 250 VAC max
 Current rating: 5 Amps max
 Contact resistance: 20 mohms max
 Insulation resistance: 5,000 Mohms min
 Dielectric withstanding voltage: 1,000 VAC for 1 minute
 Temperature Rating: Operating temperature: -65°C to +125°C
 Environmental: Lead free, RoHS compliant
 Recommended soldering temp: 230°C for 5 seconds



| | | | |
|--|-------------|---------|---------------------|
| UNLESS OTHERWISE SPECIFIED ALL DIMENSIONS ARE INCHES [MM] TOLERANCES: EXCEPT AS NOTED INCHES | | DATE | |
| .X ± .10 | ØX ± .10 | HOLDS | DATE |
| .XX ± .020 | ØXX ± .015 | | |
| .XXX ± .015 | ØXXX ± .010 | | |
| DRAWN SS | | 4/15/05 | |
| CHECKED | | SIZE | PART NO. |
| APPROVED | | X | DXXX-ST-1-BL-JS-EMI |
| | | SCALE: | SHEET 1 OF 1 |