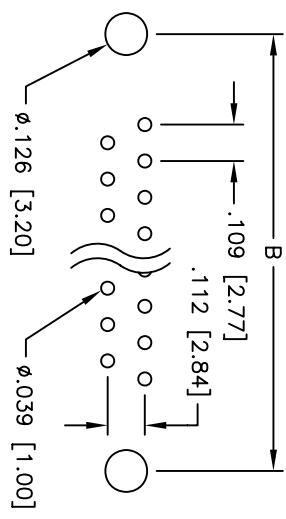
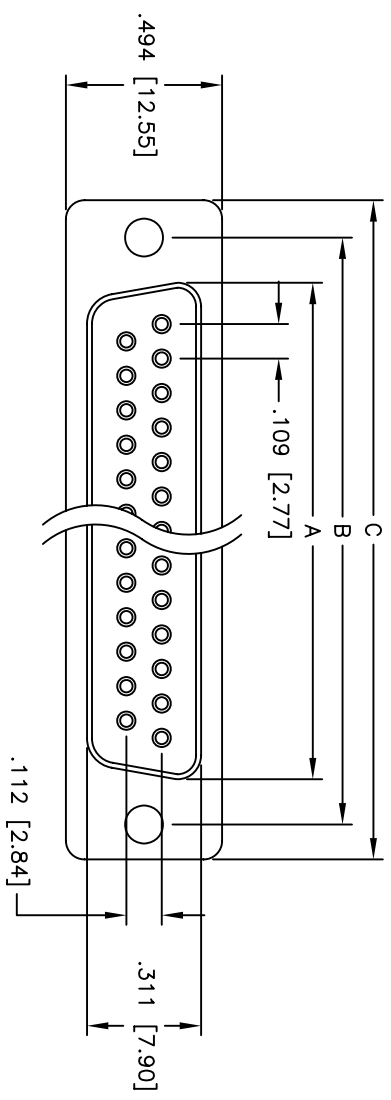
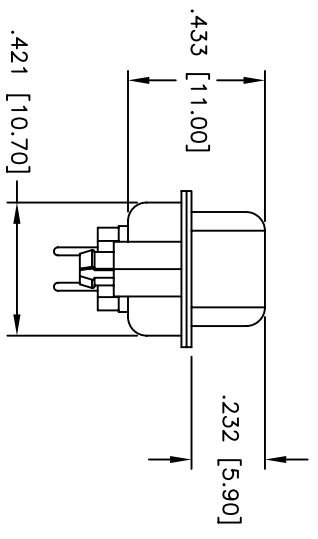
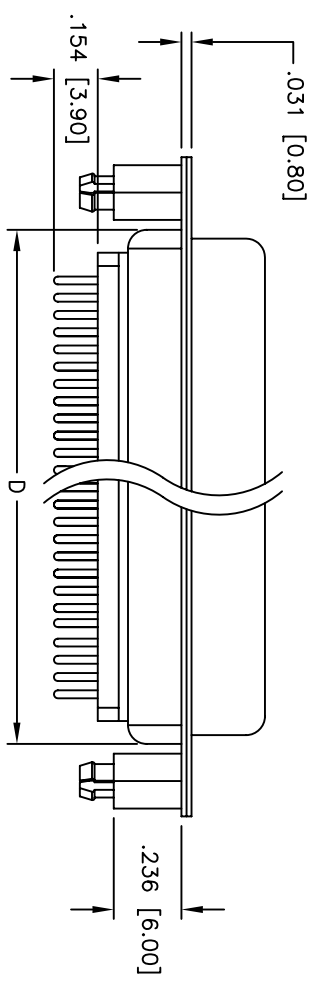


Rev	AWO #	Description	Date	Appr
-		RELEASED	4/15/05	

APPROVED: \_\_\_\_\_  
 DATE: \_\_\_\_\_ TITLE: \_\_\_\_\_



PCB LAYOUT



**SPECIFICATIONS:**

Material:  
 Insulator: PBT, glass reinforced, rated UL 94V-0  
 Insulator color: Black  
 Contacts: Phosphor Bronze  
 Shell: Steel, Tin plated  
 Hardware: Brass, Nickel plated  
 Plating:  
 Gold flash over Nickel underplate overall  
 Electrical:  
 Operating voltage: 250 VAC max  
 Current rating: 5 Amps max  
 Contact resistance: 20 mohms max  
 Insulation resistance: 5,000 Mohms min  
 Dielectric withstanding voltage: 1,000 VAC for 1 minute  
 Temperature Rating:  
 Operating temperature: -65°C to +125°C  
 Environmental:  
 Lead free, RoHS compliant  
 Recommended soldering temp: 230°C for 5 seconds

DXXX	NO. OF CONTACTS	DIMENSIONS			
		A	B	C	D
DE09	9	.643 [16.33]	.984 [24.99]	1.213 [30.81]	.756 [19.20]
DA15	15	.971 [24.66]	1.312 [33.32]	1.541 [39.14]	1.091 [27.70]
DB25	25	1.511 [38.38]	1.852 [47.04]	2.088 [53.04]	1.618 [41.10]
DC37	37	2.159 [54.84]	2.500 [63.50]	2.729 [69.32]	2.256 [57.30]

**ADAM TECH**

909 Rahway Avenue, Union, NJ 07083  
 Phone: 908-687-5000 Fax: 908-687-5710

UNLESS OTHERWISE SPECIFIED ALL DIMENSIONS ARE INCHES [MM] TOLERANCES: EXCEPT AS NOTED		TITLE	
INCHES	HOLDS	D-SUB SOCKET, EMI FILTERED	
.X ± .10	Ø.XX ± .10	RIVETED #4-40 STANDOFFS W/BOARDLOCKS	
.XX ± .020	Ø.XXX ± .015	SIZE	PART NO.
.XXX ± .015	Ø.XXX ± .010	X	DXXX-ST-1-BL-EMI
APPROVALS	DATE	SCALE:	NTS
DRAWN	SS	4/15/05	
CHECKED			
APPROVED		REF:	
		SHEET	1 OF 1