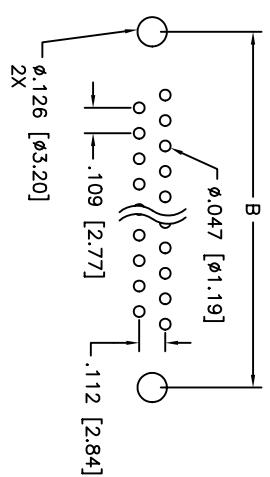
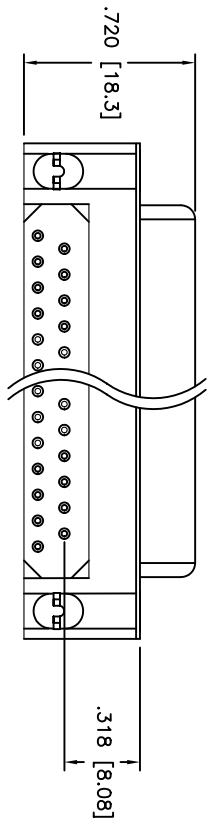
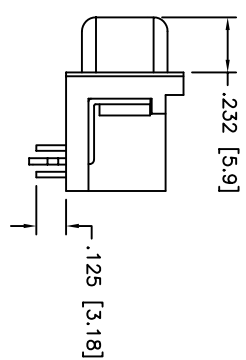
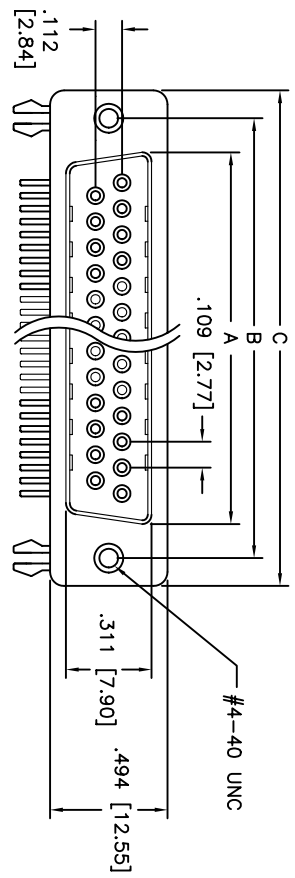


Rev	AWO #	Description	Date	Appr
-		RELEASED	9/10/04	

APPROVED: \_\_\_\_\_  
 DATE: \_\_\_\_\_ TITLE: \_\_\_\_\_



POSITIONS	Socket Dimensions		
	A	B	C
9	.643 (16.33)	.984 (24.99)	1.213 (30.81)
15	.971 (24.66)	1.312 (33.32)	1.541 (39.14)
25	1.511 (38.38)	1.852 (47.04)	2.088 (53.04)
37	2.159 (54.84)	2.500 (63.50)	2.729 (69.32)

**SPECIFICATIONS:**

**Material:**  
 Insulator: PBT, 30% glass reinforced, rated UL 94V-0  
 Insulator color: Black  
 Contacts: Phosphor Bronze  
 Shell: Steel, Nickel plated  
 Hardware: Brass, Nickel Plated  
**Plating:**  
 Gold Flash over Nickel underplate overall  
**Electrical:**  
 Operating voltage: 250 V AC/DC max  
 Current rating: 5 Amps max  
 Contact resistance: 20 mohms max. initial  
 Insulation resistance: 5000 Mohms min @ 500 VDC  
 Dielectric withstanding voltage: 1000 VAC for 1 minute  
**Packaging:**  
 Anti-ESD plastic trays  
 Temperature Rating:  
 Operating temperature: -65°C to +125°C

**ADAM TECH**

909 Railway Avenue, Union, NJ 07083  
 Phone: 908-687-5000 Fax: 908-687-5710

D-SUB, RIGHT ANGLE FEMALE, EMI  
 FILTERED, .318 FOOTPRINT PCB

UNLESS OTHERWISE SPECIFIED ALL DIMENSIONS ARE INCHES [MM]		TITLE	
TOLERANCES: EXCEPT AS NOTED	INCHES	DATE	9/10/04
.X ± .10	ØXX ± .10	APPROVALS	SS
.XX ± .020	ØXXX ± .015	CHECKED	
.XXX ± .015	ØXXXX ± .010	DRAWN	
APPROVED		SIZE	X
		PART NO.	DXXX-SL-24-EMI
		SCALE:	NTS
		SHEET	1 OF 1
		REV.	