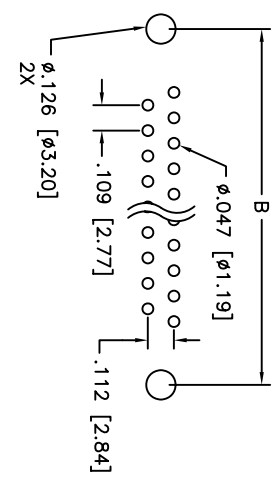
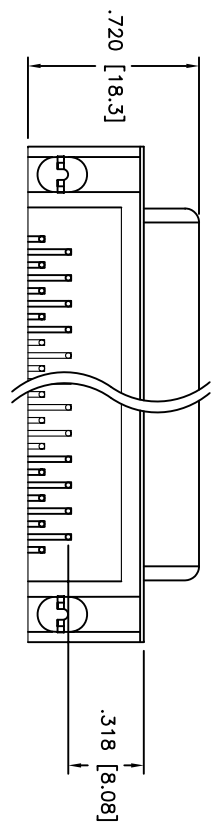
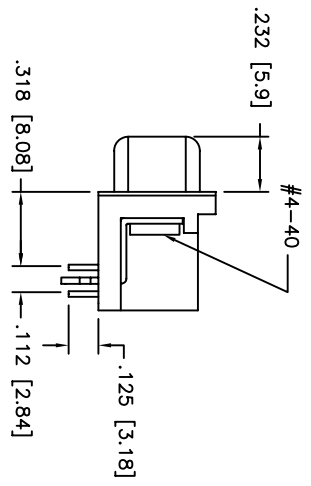
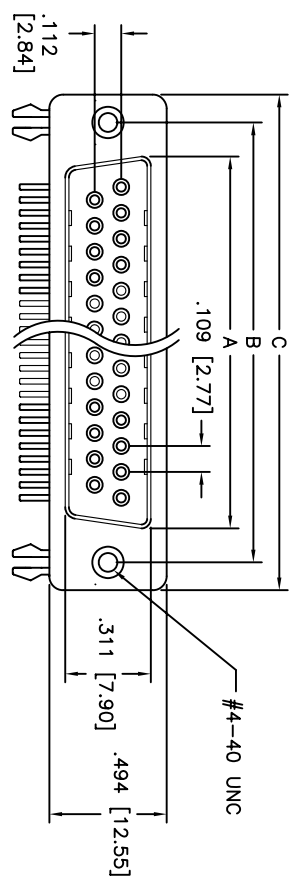


Rev	AWO #	Description	Date	Appr
-		RELEASED	10/19/04	

APPROVED: _____
 DATE: _____ TITLE: _____



RECOMMENDED PCB LAYOUT

POSITIONS	Socket Dimensions		
	A	B	C
9	.643 (16.33)	.984 (24.99)	1.213 (30.81)
15	.971 (24.66)	1.312 (33.32)	1.543 (39.20)
25	1.511 (38.38)	1.852 (47.04)	2.090 (53.10)
37	2.159 (54.84)	2.500 (63.50)	2.732 (69.40)

ADAM TECH

909 Rahway Avenue, Union, NJ 07083
 Phone: 908-687-5000 Fax: 908-687-5710

TITLE: D-SUB, RIGHT ANGLE FEMALE, PCB
 30u" GOLD

UNLESS OTHERWISE SPECIFIED ALL DIMENSIONS ARE INCHES [MM]		TOLERANCES: EXCEPT AS NOTED	
INCHES		HOLDS	
.X ± .10	ØXX ± .10	ØXX ± .015	
.XX ± .020	ØXXX ± .015	ØXXX ± .010	
.XXX ± .015	DATE	APPROVALS	
DRAWN	SS	10/19/04	
CHECKED			
APPROVED			
SIZE	PART NO.	SCALE	REV.
X	DXXX-SL-24-30	NIS	-
REF:		SHEET	1 OF 1

SPECIFICATIONS:
 Material: Insulator: PBT, glass reinforced, rated UL 94V-0
 Insulator color: Black
 Contacts: Phosphor Bronze
 Shell: Steel, Zinc plated
 Plating: 30u" Gold over Nickel underplate overall
 Electrical: Operating voltage: 250 VAC max
 Current rating: 5 Amps max
 Contact resistance: 20 mohms max
 Insulation resistance: 5000 Mohms min @ 500 VDC
 Dielectric withstanding voltage: 1000 VAC for 1 minute
 Temperature Rating: Operating temperature: -65°C to +125°C
 Environmental: Lead free, RoHS compliant.
 Recommended soldering temp: 235 for 5 sec

