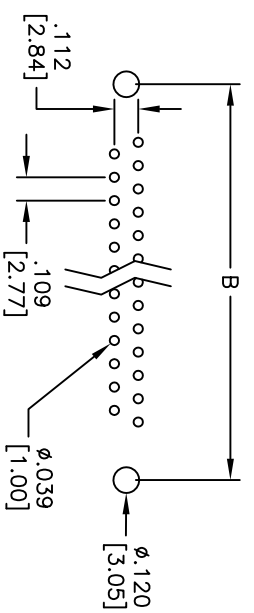
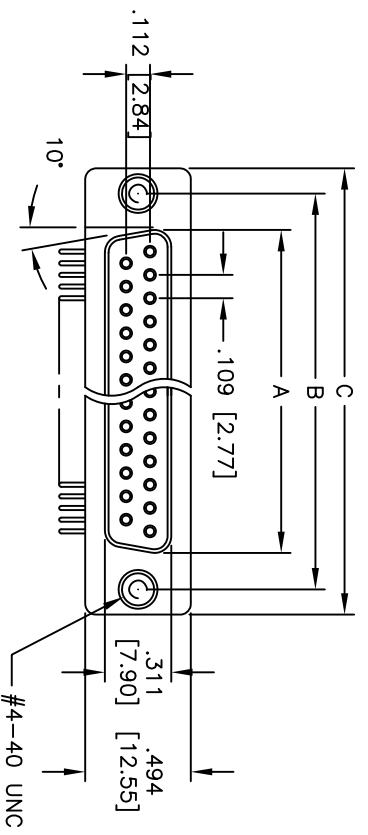
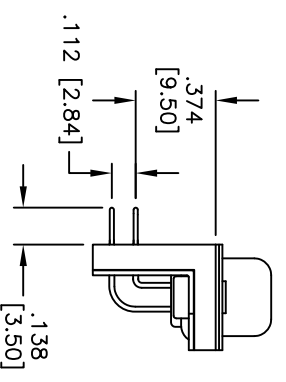
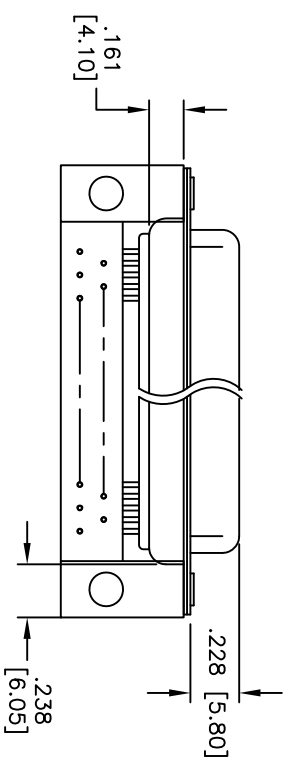


|     |       |             |         |      |
|-----|-------|-------------|---------|------|
| Rev | AWO # | Description | Date    | Appr |
| -   |       | RELEASED    | 7/23/10 |      |

APPROVED: \_\_\_\_\_  
 DATE: \_\_\_\_\_ TITLE: \_\_\_\_\_



RECOMMENDED PCB LAYOUT



| DXXX | NO. OF CONTACTS | DIMENSIONS    |               |               |
|------|-----------------|---------------|---------------|---------------|
|      |                 | A             | B             | C             |
| DE09 | 9               | .643 [16.33]  | .984 [24.99]  | 1.213 [30.81] |
| DA15 | 15              | .972 [24.70]  | 1.311 [33.30] | 1.543 [39.20] |
| DB25 | 25              | 1.512 [38.40] | 1.852 [47.04] | 2.089 [53.05] |
| DC37 | 37              | 2.157 [54.80] | 2.500 [63.50] | 2.732 [69.40] |

# ADAM TECH

909 Rahway Avenue, Union, NJ 07083  
 Phone: 908-687-5000 Fax: 908-687-5710

TITLE: .374 [9.50] FOOTPRINT R1A D-SUB SOCKET  
 MACHINED CONTACTS, #4-40 THREADED

**SPECIFICATIONS:**  
 Material: Insulator: PBT, glass reinforced, rated UL 94V-0  
 Insulator color: Black  
 Contacts: Copper Alloy  
 Shell: Steel, Tin plated  
 Plating: Gold flash over Nickel underplate overall  
 Electrical: Operating voltage: 250 VAC max  
 Current rating: 3 Amps max  
 Contact resistance: 20 mohms max  
 Insulation resistance: 1,000 Mohms min  
 Dielectric withstanding voltage: 1,000 VAC for 1 minute  
 Temperature Rating: Operating temperature: -65°C to +125°C  
 Environmental: Lead free, RoHS compliant  
 Recommended soldering temp: 235°C for 5 seconds



|  |        |           |             |               |        |
|--|--------|-----------|-------------|---------------|--------|
| UNLESS OTHERWISE SPECIFIED ALL DIMENSIONS ARE INCHES [MM] TOLERANCES: EXCEPT AS NOTED INCHES |        | DRAWN: DY |             | DATE: 7/23/10 |        |
| .X   | ± .10  | ØX        | ± .10       |               |        |
| .XX  | ± .020 | ØXX       | ± .015      |               |        |
| .XXX   | ± .015 | ØXXX      | ± .010      |               |        |
| APPROVALS:   |        | DATE:     |             | TITLE:        |        |
| CHECKED  |        | SIZE      | PART NO.    | REV.          |        |
| APPROVED   |        | X         | DXXX-SH-G3A | -             |        |
| REF: S0087T  |        | SCALE:    | NIS         | SHEET         | 1 OF 1 |