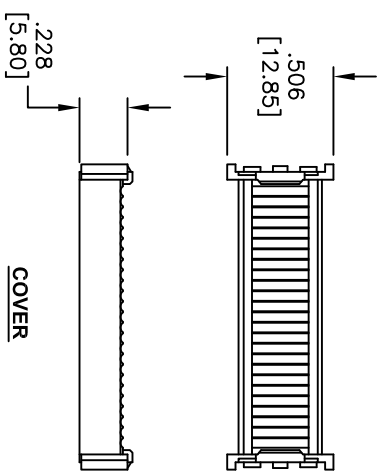
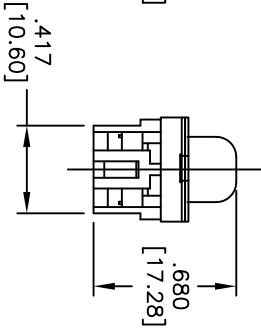
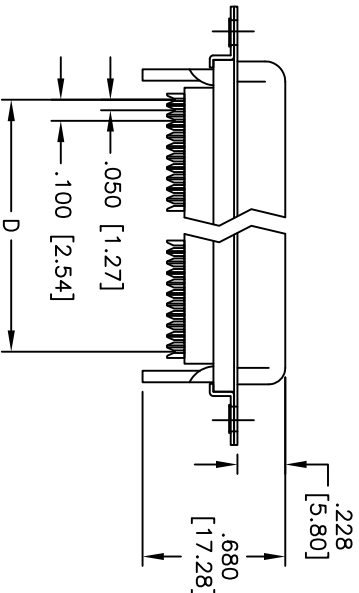
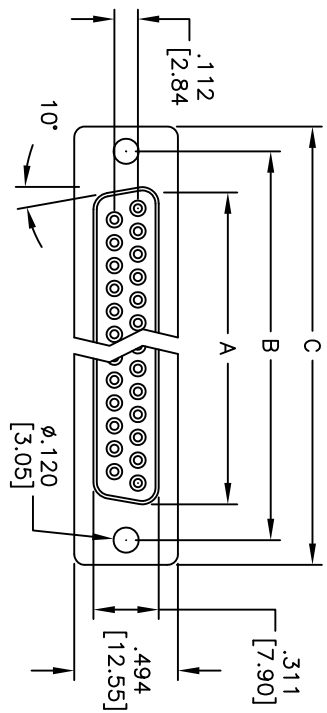


Rev	AWO #	Description	Date	Appr
-		RELEASED	8/26/10	

APPROVED: \_\_\_\_\_  
 DATE: \_\_\_\_\_ TITLE: \_\_\_\_\_



WITHOUT INSULATOR SUPPORT

DXXX	NO. OF CONTACTS	DIMENSIONS			
		A	B	C	D
DE09	9	.643 [16.33]	.984 [24.99]	1.213 [30.81]	.400 [10.16]
DA15	15	.971 [24.66]	1.312 [33.32]	1.541 [39.14]	.700 [17.78]
DB25	25	1.511 [38.38]	1.852 [47.04]	2.088 [53.04]	1.200 [30.48]
DC37	37	2.159 [54.84]	2.500 [63.50]	2.729 [69.32]	1.800 [45.72]

**SPECIFICATIONS:**

Material: Insulator: PBT, glass reinforced, rated UL 94V-0  
 Insulator color: Black  
 Contacts: Copper Alloy  
 Shell: SPCC, Tin plated  
 Plating:  
 Gold flash over Nickel underplate,  
 Tin over Copper underplate on IDC area

**Electrical:**

Operating voltage: 250 VAC max  
 Current rating: 1 Amps max  
 Contact resistance: 20 mohms max  
 Insulation resistance: 1,000 Mohms min  
 Dielectric withstanding voltage: 1,000 VAC for 1 minute  
 Temperature Rating:  
 Operating temperature: -65°C to +125°C  
 Environmental:  
 Lead free, RoHS compliant



**ADAM TECH**

909 Rahway Avenue, Union, NJ 07083  
 Phone: 908-687-5000 Fax: 908-687-5710

TITLE: IDC FLAT CABLE D-SUB SOCKET  
 METAL SHELL, .120" MOUNTING HOLES

UNLESS OTHERWISE SPECIFIED ALL DIMENSIONS ARE IN INCHES [MM]	
TOLERANCES: EXCEPT AS NOTED	
.X ± .10	ØX ± .10
.XX ± .020	ØXXX ± .015
.XXX ± .015	ØXXX ± .010
APPROVALS	DATE
DRAWN	DY
CHECKED	
APPROVED	

SIZE	PART NO.	REV.
X	DXXX-SF-M1-NIS	-
REF: S00087	SCALE: NTS	SHEET 1 OF 1