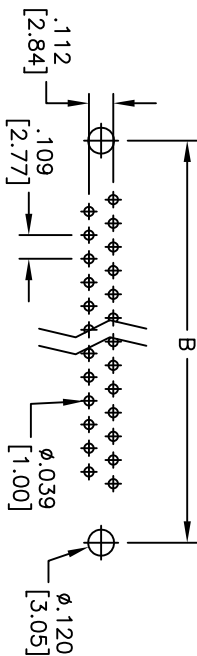
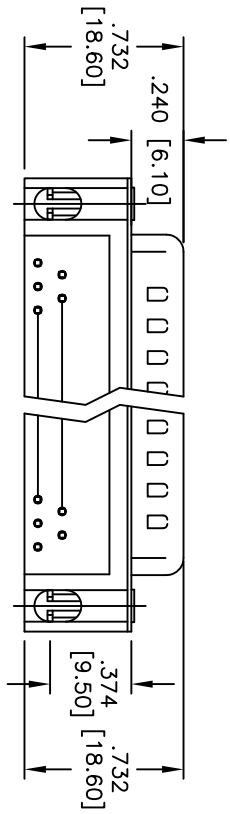
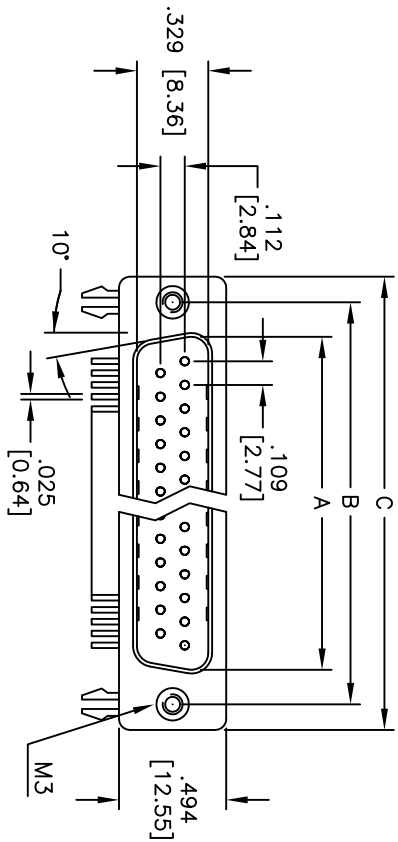
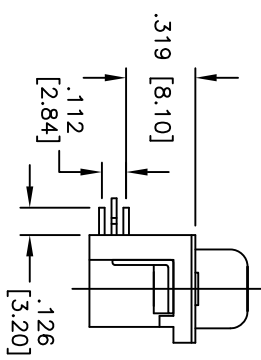


| Rev | AWO # | Description | Date | Appr |
|-----|-------|-------------|---------|------|
| - | | RELEASED | 3/10/10 | |

APPROVED: _____
 DATE: _____ TITLE: _____



RECOMMENDED PCB LAYOUT



| DXXX | NO. OF CONTACTS | DIMENSIONS | | |
|------|-----------------|---------------|---------------|---------------|
| | | A | B | C |
| DE09 | 9 | .666 [16.92] | .984 [24.99] | 1.213 [30.81] |
| DA15 | 15 | .994 [25.25] | 1.311 [33.30] | 1.543 [39.20] |
| DB25 | 25 | 1.573 [38.96] | 1.852 [47.04] | 2.089 [53.05] |
| DC37 | 37 | 2.182 [55.42] | 2.500 [63.50] | 2.732 [69.40] |

SPECIFICATIONS:

Material: Insulator: PBT, glass reinforced, rated UL 94V-0
 Insulator color: Black
 Contacts: Copper Alloy
 Shell: Steel, Tin plated.
 Clinch Nut: Copper Alloy, Nickel plated
 Boardlock: Brass, Tin plated
 Plating:

Gold flash over Nickel underplate overall

Electrical:

Operating voltage: 250 VAC max
 Current rating: 3 Amps max
 Contact resistance: 20 mohms max
 Insulation resistance: 1,000 Mohms min
 Dielectric withstanding voltage: 1,000 VAC for 1 minute
 Temperature Rating:
 Operating temperature: -55°C to +105°C
 Environmental:
 Lead free, RoHS compliant



Recommended soldering temp: 235°C for 5 seconds

ADAM TECH

909 Rahway Avenue, Union, NJ 07083
 Phone: 908-687-5000 Fax: 908-687-5710

TITLE: .318 [8.08] FOOTPRINT D-SUB PLUG, R/A
 M3 FLUSH THREADED INSERTS

| | | | | | |
|---|--|---|---------------|---------------|--------|
| UNLESS OTHERWISE SPECIFIED ALL DIMENSIONS ARE INCHES [MM] TOLERANCES: EXCEPT AS NOTED | | DRAWN: DY | | DATE: 3/10/10 | |
| INCHES: .X ±.10, .XX ±.020, .XXX ±.015 | | HOLDERS: ØX ±.10, ØXX ±.015, ØXXX ±.010 | | APPROVALS: | |
| CHECKED: | | SIZE: | PART NO.: | SCALE: | REV. |
| APPROVED: | | X | DXXX-PL-24-M3 | NTS | 1 OF 1 |
| | | REF: | S00087T | SHEET: | 1 OF 1 |