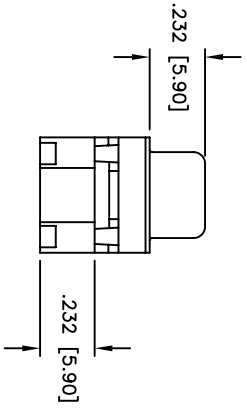
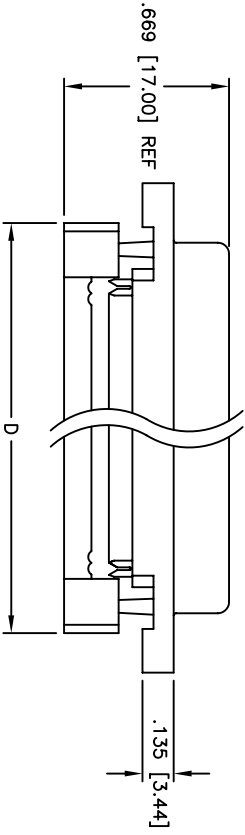
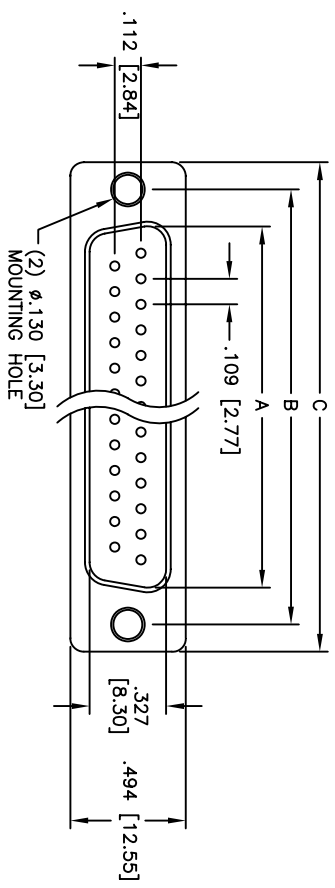


Rev	AWO #	Description	Date	Appr
-		RELEASED	4/27/05	

APPROVED: _____
 DATE: _____ TITLE: _____



Positions	DIMENSIONS			
	A	B	C	D
9	.666 [16.92]	.984 [24.99]	1.213 [30.81]	.883 [22.44]
15	.994 [25.25]	1.312 [33.32]	1.541 [39.14]	1.213 [30.81]
25	1.534 [38.96]	1.852 [47.04]	2.088 [53.04]	1.755 [44.57]
37	2.182 [55.43]	2.500 [63.50]	2.729 [69.32]	2.414 [61.32]

Unit: Inch / mm

SPECIFICATIONS:

Material:
 Insulator: PBT, glass reinforced, rated UL 94V-0
 Insulator color: Black
 Contacts: Phosphor Bronze
 Plating:
 Gold flash over Nickel underplate,
 Tin over Copper underplate on IDC area
Electrical:
 Operating voltage: 250 VAC max
 Current rating: 5 Amps max
 Contact resistance: 20 mohms max
 Insulation resistance: 5,000 Mohms min
 Dielectric withstanding voltage: 1,000 VAC for 1 minute
Mechanical:
 Recommended cable size: 28-30 AWG
 Temperature Rating:
 Operating temperature: -65°C to +125°C
Environmental:
 Lead free, RoHS compliant



ADAM TECH

909 Rahway Avenue, Union, NJ 07083
 Phone: 908-687-5000 Fax: 908-687-5710

IDC FLAT CABLE D-SUB PLUG
ALL PLASTIC BODY, .130 [3.30] HOLES

UNLESS OTHERWISE SPECIFIED ALL DIMENSIONS ARE INCHES [MM] TOLERANCES: EXCEPT AS NOTED		INCHES		HOLDERS	
.X	± .10	ØX	± .10		
.XX	± .020	ØXX	± .015		
.XXX	± .015	ØXXX	± .010		
APPROVALS	DATE				
DRAWN	SS	4/27/05			
CHECKED					
APPROVED					
SIZE	PART NO.	SCALE	NTS	SHEET	1 OF 1
X	DXXX-PF-P1				
REV.					