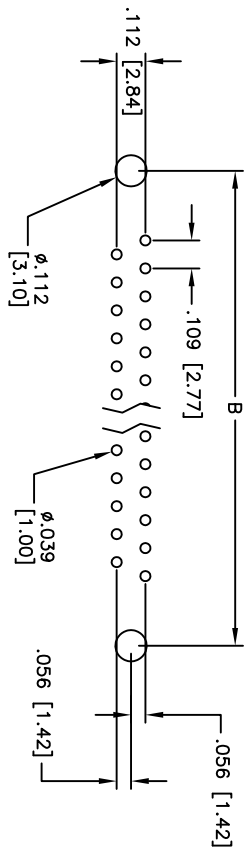
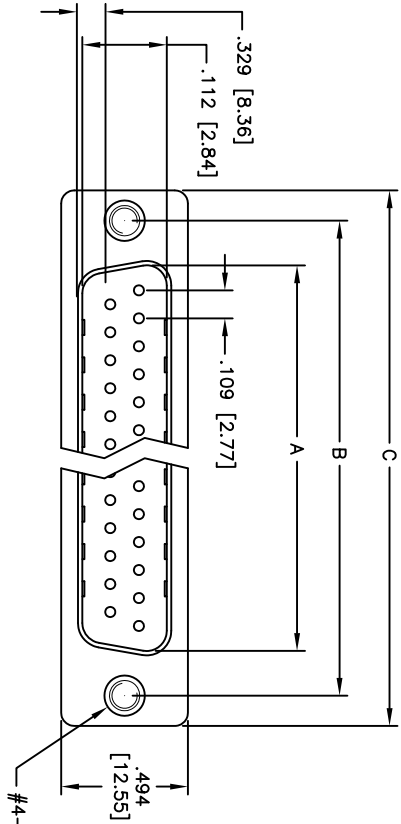
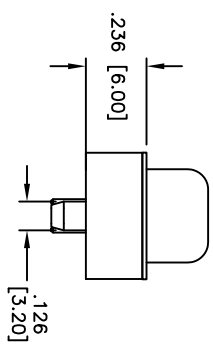
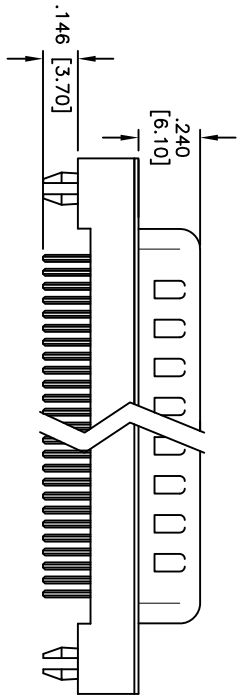


Rev	AWO #	Description	Date	Appr
-		RELEASED	9/13/10	

APPROVED: _____
 DATE: _____ TITLE: _____



RECOMMENDED PCB LAYOUT



Positions	DIMENSIONS		
	A	B	C
9	.666 [16.92]	.984 [24.99]	1.213 [30.81]
15	.994 [25.25]	1.311 [33.30]	1.543 [39.20]
25	1.534 [38.96]	1.852 [47.04]	2.089 [53.05]
37	2.182 [55.42]	2.500 [63.50]	2.732 [69.40]

SPECIFICATIONS:

Material: Insulator: PBT, glass reinforced, rated UL 94V-0
 Insulator color: Black
 Contacts: Copper Alloy
 Shell: Steel, Tin plated
 Hardware: Brass, Nickel plated
 Plating: Gold flash over Nickel underplate overall

Electrical: Operating voltage: 250 VAC max
 Current rating: 1 Amps max
 Contact resistance: 20 mohms max
 Insulation resistance: 1,000 Mohms min
 Dielectric withstanding voltage: 1,000 VAC for 1 minute

Temperature Rating: Operating temperature: -55°C to +105°C
 Environmental: Lead free, RoHS compliant
 Recommended soldering temp: 235°C for 5 seconds



UNLESS OTHERWISE SPECIFIED
 ALL DIMENSIONS ARE INCHES [MM]
 TOLERANCES: EXCEPT AS NOTED
 INCHES HOLE SIZES
 .X ± .10 ØXX ± .10
 .XX ± .020 ØXXX ± .015
 .XXX ± .015 ØXXXX ± .010
 APPROVALS DATE

ADAM TECH
 909 Railway Avenue, Union, NJ 07083
 Phone: 908-687-5000 Fax: 908-687-5710
 TITLE: D-SUB PLUG; FLUSH MOUNT
 #4-40 THREADED FLUSH INSERTS

DRAWN	AY	9/13/10	SIZE	PART NO.	REV.
CHECKED	AW	9/13/10	X	DXXX+PA-M2-BL-3.7	-
APPROVED			REF: S00087T	SCALE: NTS	SHEET 1 OF 1