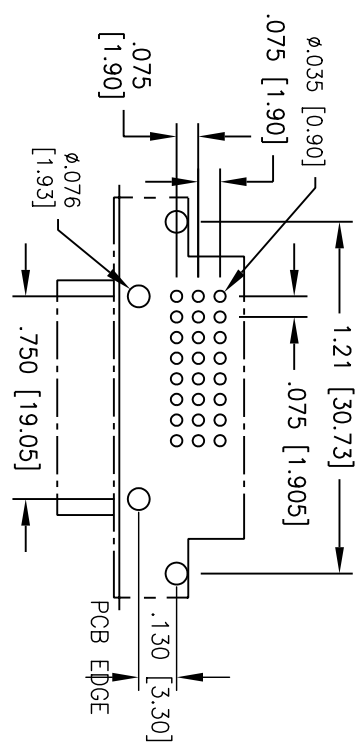
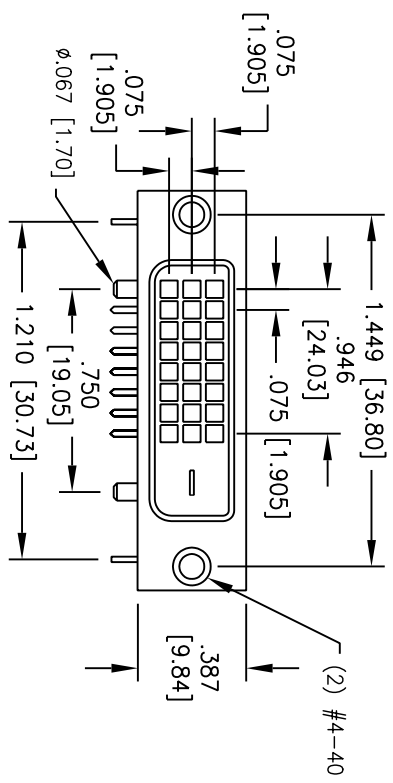
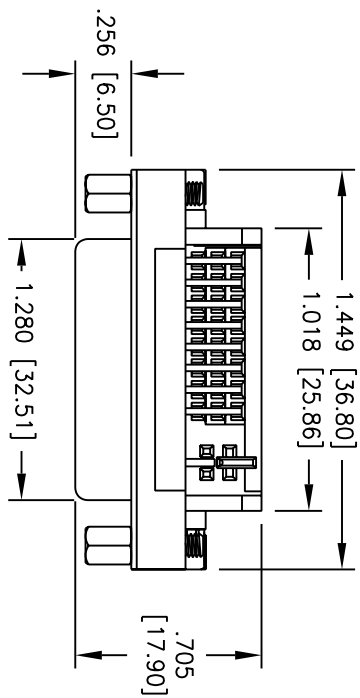
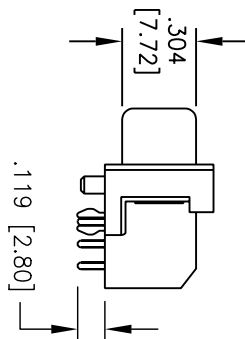


Rev	AWO #	Description	Date	Appr
-		RELEASED	03/08/05	

APPROVED: \_\_\_\_\_ TITLE: \_\_\_\_\_  
 DATE: \_\_\_\_\_



RECOMMENDED  
PCB LAYOUT



**SPECIFICATIONS:**

- Material: Insulator: PBI, glass reinforced, rated UL 94V-0
- Insulator color: Black
- Contacts: Phosphor Bronze or Brass
- Shell: Steel, Nickel plated
- Plating: Gold Flash over Nickel underplate on mating area, Tin over Copper underplate on tails
- Electrical: Operating voltage: 250 VAC max  
Current rating: 1.5 Amps max  
Insulation resistance: 1000 Mohms min @ 500 VDC  
Dielectric withstanding voltage: 500 VAC for 1 minute
- Temperature Rating: Operating temperature: -55°C to +85°C
- Environmental: Lead free, RoHS compliant

**ADAM TECH**  
 909 Railway Avenue, Union, NJ 07083  
 Phone: 908-687-5000 Fax: 908-687-5710

UNLESS OTHERWISE SPECIFIED ALL DIMENSIONS ARE INCHES [MM]	
TOLERANCES: EXCEPT AS NOTED	
INCHES	HOLES
.X ± .10	ØXX ± .10
.XX ± .020	ØXXX ± .015
.XXX ± .015	ØXXXX ± .010
APPROVALS	DATE
DRAWN SS	03/08/05
CHECKED	
APPROVED	

TITLE	DIGITAL, PCB	
SIZE	PART NO.	REV.
X	DVI-SL-24-1	-
REF:	SCALE: NTS	SHEET 1 OF 1