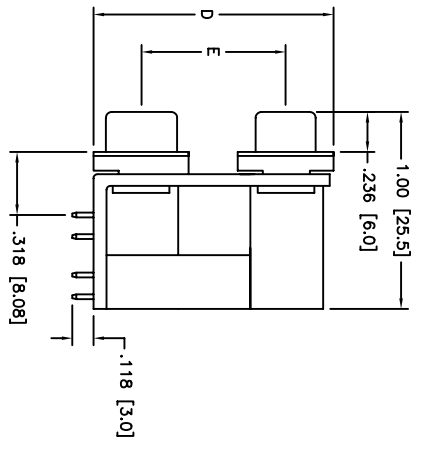
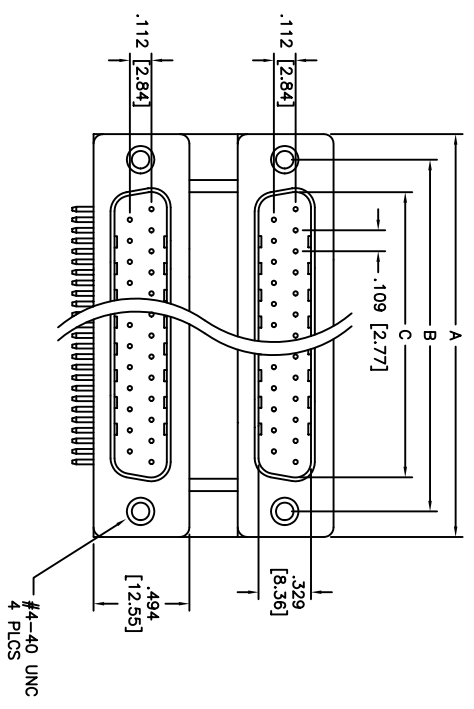
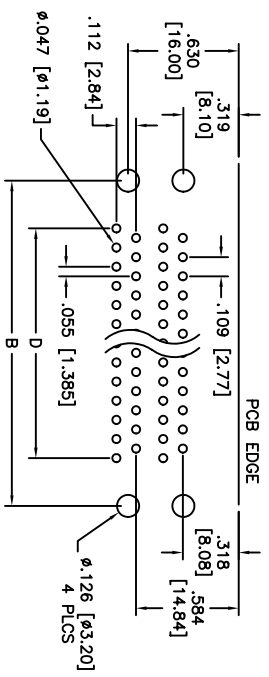
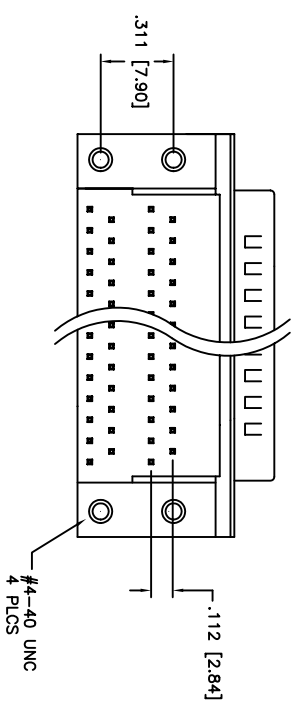


Rev	AWO #	Description	Date	Appr
-		RELEASED	11/22/04	

APPROVED: \_\_\_\_\_  
 DATE: \_\_\_\_\_ TITLE: \_\_\_\_\_



PORT SPACING	Dimensions	
	E	F
A	.900 [22.86]	1.392 [35.36]
B	.750 [19.05]	1.242 [31.55]
C	.625 [15.88]	1.117 [28.38]



POSITIONS	Plug Dimensions			
	A	B	C	D
9	1.212 [30.80]	.984 [24.99]	.666 [16.92]	.436 [11.08]
15	1.541 [39.14]	1.312 [33.32]	.994 [25.25]	.763 [19.39]
25	2.086 [53.00]	1.852 [47.04]	1.534 [38.96]	1.308 [33.24]
37	2.729 [69.32]	2.500 [63.50]	2.182 [55.42]	1.963 [49.86]

**SPECIFICATIONS:**

Material: Insulator: PBT, glass reinforced, rated UL 94V-0  
 Insulator color: Black  
 Contacts: Phosphor Bronze  
 Shell: Steel, Zinc plated  
 Plating:  
 5u" Gold nom over Nickel underplate overall  
 Electrical:  
 Operating voltage: 250 VAC max  
 Current rating: 5 Amps max  
 Contact resistance: 20 mohms max  
 Insulation resistance: 5000 Mohms min @ 500 VDC  
 Dielectric withstanding voltage: 1000 VAC for 1 minute  
 Temperature Rating:  
 Operating temperature: -65°C to +125°C

**ADAM TECH**

909 Rahway Avenue, Union, NJ 07083  
 Phone: 908-687-5000 Fax: 908-687-5710

TITLE: DUAL PORT D-SUB, RIGHT ANGLE  
 MALE / MALE, XX POSITION

UNLESS OTHERWISE SPECIFIED ALL DIMENSIONS ARE INCHES [MM] TOLERANCES: EXCEPT AS NOTED	
INCHES	HOLDS
.X ± .10	ØX ± .10
.XX ± .020	ØXX ± .015
.XXX ± .015	ØXXX ± .010
APPROVALS	DATE
DRAWN SS	11/22/04
CHECKED	
APPROVED	

SIZE	PART NO.	REV.
X	DPD-XX-11-X2	-
REF:	SCALE: NTS	SHEET 1 OF 1