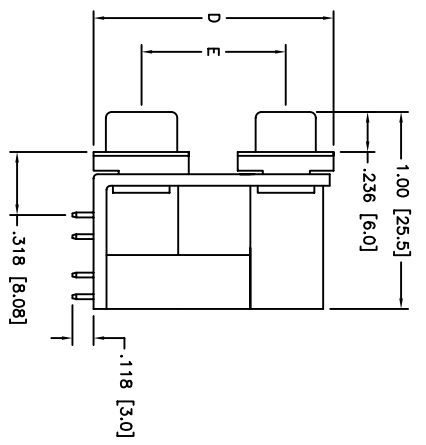
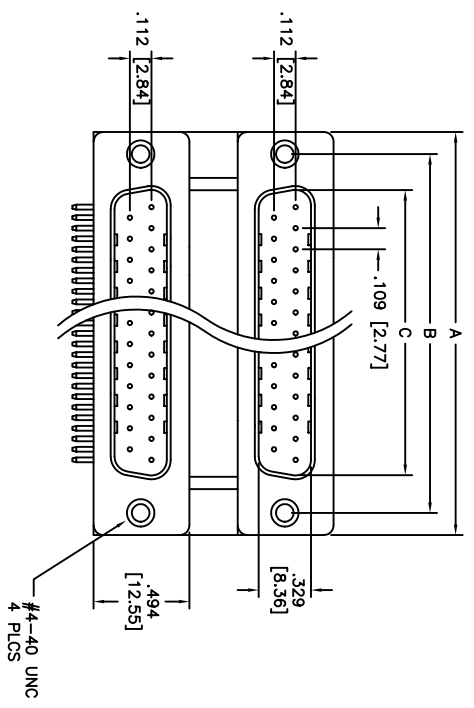
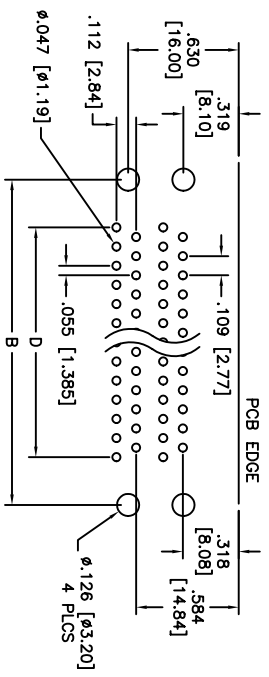
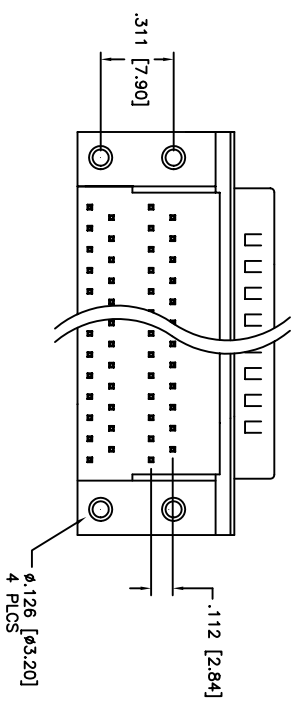


APPROVED: _____
 DATE: _____ TITLE: _____



PORT SPACING	Dimensions	
	E	F
A	.900 [22.86]	1.392 [35.36]
B	.750 [19.05]	1.242 [31.55]
C	.625 [15.88]	1.117 [28.38]



POSITIONS	A	B	C	D
9	1.212 [30.80]	.984 [24.99]	.666 [16.92]	.436 [11.08]
15	1.541 [39.14]	1.312 [33.32]	.994 [25.25]	.763 [19.39]
25	2.086 [53.00]	1.852 [47.04]	1.534 [38.96]	1.308 [33.24]
37	2.729 [69.32]	2.500 [63.50]	2.182 [55.42]	1.963 [49.86]

SPECIFICATIONS:
 Material: Insulator: PBT, glass reinforced, rated UL 94V-0
 Insulator color: Black
 Contacts: Phosphor Bronze
 Shell: Steel, Zinc plated
 Plating:
 5u" Gold nom over Nickel underplate overall
 Electrical:
 Operating voltage: 250 VAC max
 Current rating: 5 Amps max
 Contact resistance: 20 mohms max
 Insulation resistance: 5000 Mohms min @ 500 VDC
 Dielectric withstanding voltage: 1000 VAC for 1 minute
 Temperature Rating:
 Operating temperature: -65°C to +125°C

UNLESS OTHERWISE SPECIFIED
 ALL DIMENSIONS ARE IN INCHES [MM]
 TOLERANCES: EXCEPT AS NOTED
 INCHES
 .X ± .10 ØX ± .10
 .XX ± .020 ØXX ± .015
 .XXX ± .015 ØXXX ± .010
 APPROVALS

ADAM TECH
 909 Rahway Avenue, Union, NJ 07083
 Phone: 908-687-5000 Fax: 908-687-5710

A
 Operating voltage: 250 VAC max
 Current rating: 5 Amps max
 Contact resistance: 20 mohms max
 Insulation resistance: 5000 Mohms min @ 500 VDC
 Dielectric withstanding voltage: 1000 VAC for 1 minute
 Temperature Rating:
 Operating temperature: -65°C to +125°C

DRAWN SS 11/22/04
 CHECKED
 APPROVED

TITLE: DUAL PORT D-SUB, RIGHT ANGLE
 MALE / MALE, XX POSITION
 SIZE: X
 PART NO.: DDP-XX-1-X1
 SCALE: NTS
 SHEET 1 OF 1